



PICASSO LIGHTING INDUSTRIES, LLC
46 Sellers Street, Kearny, NJ 07032
201.246.8188

Indoor Distribution Test Report

Picasso Lighting Industries, LLC

46 Sellers St.
Kearny, NJ 07032

Photopia Photometric Analysis & Optical Design

Catalog Number
TAS-L-4'-D7-30K-80-OPL-W
(White Housing – Direct – Opal Lens)

Test Number

IES-P00084

Test Date

2017-03-22

The results contained in this report pertain only to the tested sample.
This report shall not be reproduced, except in full, without written approval of Picasso Lighting Industries, LLC.

Luminaire Description:	Stainless Steel Cover, Aluminum Base, Direct w/ Opal Lens
Lamp:	LED (3000K, 80+ CRI)
Installation:	Under Cabinet, Surface Mounted
Luminous Length:	47.00 in
Luminous Width:	1.97 in
Luminous Height:	0.00 in

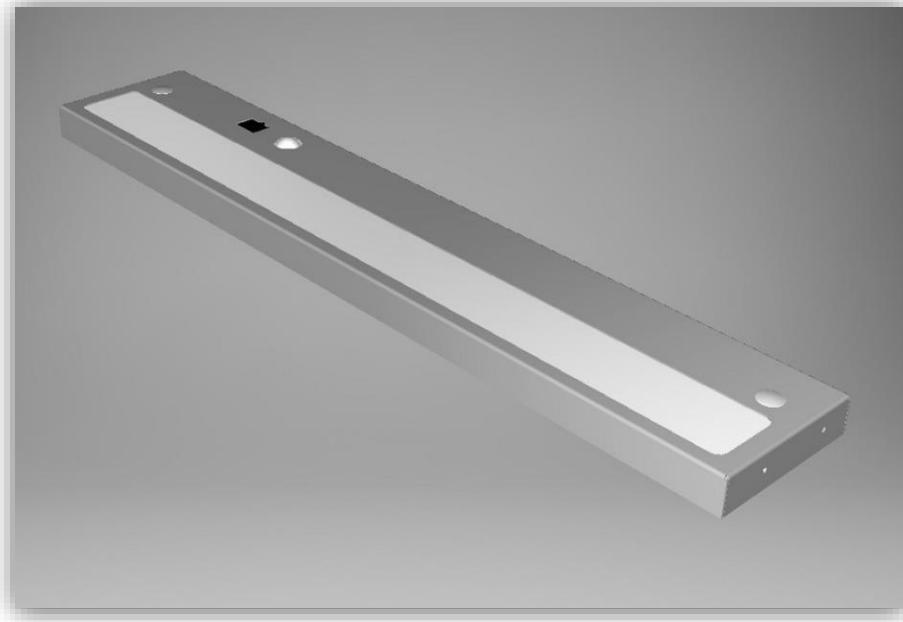


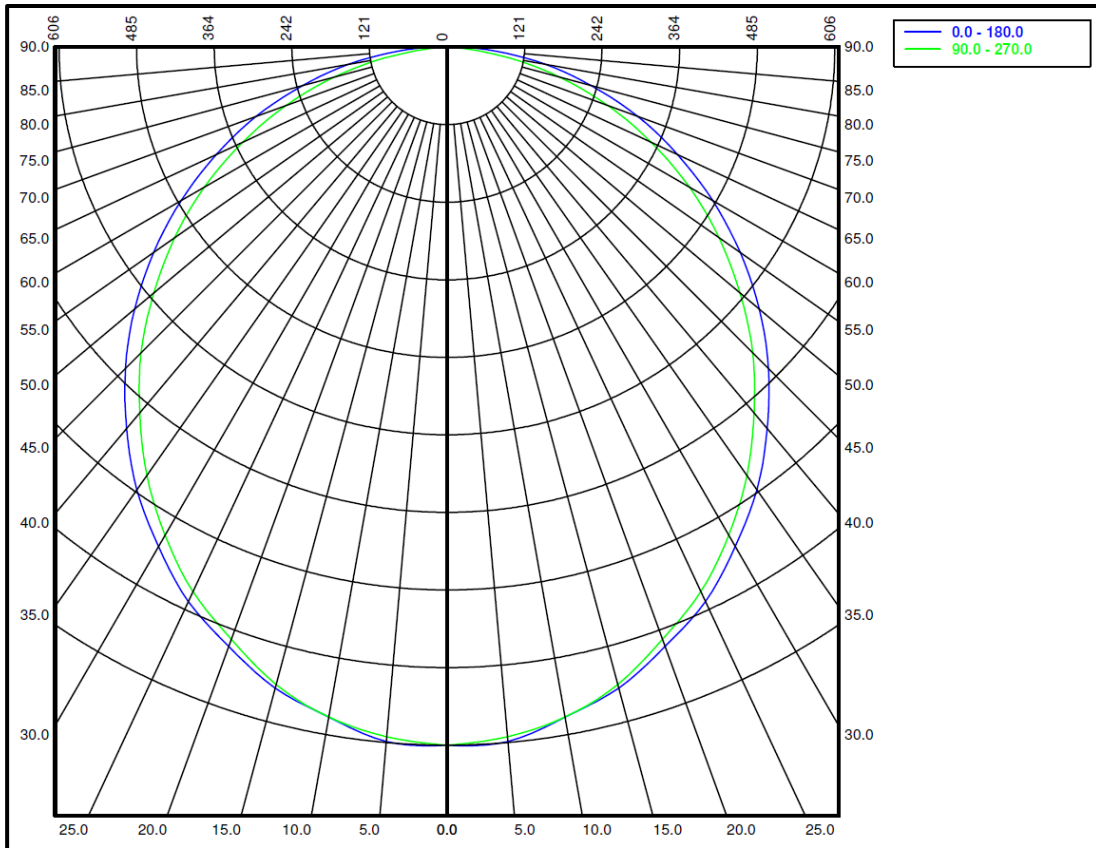
Image may differ slightly from actual unit

Summary of Results

System Power:	28.5W
Total Luminaire Output:	3010 Lumens
Luminaire Efficacy:	106 lm/W
Max Candela:	1090.94 Candela

Calculated results may not be representative of field performance
Ballast factors have not been applied

Polar Plot



Zonal Lumen Summary

Zone	Lumens	% Fixture	Zone	Lumens	% Fixture
0-10	102.82	3.4%	90-100	0	0.0%
10-20	291.66	9.7%	100-110	0	0.0%
20-30	435.72	14.5%	110-120	0	0.0%
30-40	518.99	17.2%	120-130	0	0.0%
40-50	533.02	17.7%	130-140	0	0.0%
50-60	480.16	16.0%	140-150	0	0.0%
60-70	369.9	12.3%	150-160	0	0.0%
70-80	218.23	7.2%	160-170	0	0.0%
80-90	59.58	2.0%	170-180	0	0.0%
0-90	3010.08	100.0%	0-180	3010.08	100.0%

Candela Distribution

Horizontal Angle (Degrees)

	0	22.5	45	67.5	90	112.5	135	157.5	180	202.5	225	247.5	270	292.5	315	337.5
0	1091	1091	1091	1091	1091	1091	1091	1091	1091	1091	1091	1091	1091	1091	1091	1091
5	1089	1077	1082	1081	1082	1081	1082	1077	1089	1077	1082	1081	1082	1081	1082	1077
10	1063	1066	1072	1065	1063	1065	1072	1066	1063	1066	1072	1065	1063	1065	1072	1066
15	1037	1038	1038	1031	1031	1031	1038	1038	1037	1038	1038	1031	1031	1031	1038	1038
20	997	996	991	985	985	985	991	996	997	996	991	985	985	985	991	996
25	956	951	947	940	939	940	947	951	956	951	947	940	939	940	947	951
30	901	901	888	883	881	883	888	901	901	901	888	883	881	883	888	901
35	845	837	830	820	817	820	830	837	845	837	830	820	817	820	830	837
40	779	772	762	754	747	754	762	772	779	772	762	754	747	754	762	772
45	710	703	688	680	676	680	688	703	710	703	688	680	676	680	688	703
50	637	629	614	599	598	599	614	629	637	629	614	599	598	599	614	629
55	559	552	537	521	519	521	537	552	559	552	537	521	519	521	537	552
60	480	472	454	441	438	441	454	472	480	472	454	441	438	441	454	472
65	398	388	372	358	352	358	372	388	398	388	372	358	352	358	372	388
70	318	307	289	274	268	274	289	307	318	307	289	274	268	274	289	307
75	234	223	204	189	183	189	204	223	234	223	204	189	183	189	204	223
80	157	143	120	103	99	103	120	143	157	143	120	103	99	103	120	143
85	78	59	36	28	26	28	36	59	78	59	36	28	26	28	36	59
90	17	6	5	7	7	7	5	6	17	6	5	7	7	7	5	6

Average Luminance (cd/m²)

Horizontal Angle (Degrees)

ANGLES	0-Deg	45-Deg	90-Deg
0	18263	18263	18263
45	16803	16283	15988
55	16310	15644	15138
65	15737	14713	13942
75	15129	13203	11847
85	14952	7002	5035

Coefficients of Utilization – Zonal Cavity Method

Effective Floor Cavity Reflectance 20%																		
RC	80				70				50			30			10			0
RW	70	50	30	10	70	50	30	10	50	30	10	50	30	10	50	30	10	0
RCR	Values are in Lumens delivered to the Task Plane																	
0	3582	3582	3582	3582	3492	3492	3492	3492	3341	3341	3341	3191	3191	3191	3070	3070	3070	3010
1	3281	3130	2980	2890	3191	3070	2950	2829	2920	2829	2739	2799	2739	2649	2709	2649	2589	2498
2	2980	2709	2498	2348	2890	2649	2468	2318	2559	2408	2258	2468	2318	2197	2378	2258	2167	2077
3	2709	2378	2137	1957	2619	2348	2107	1926	2258	2047	1896	2167	1987	1866	2077	1957	1836	1746
4	2468	2107	1836	1656	2408	2077	1836	1625	1987	1776	1595	1926	1746	1595	1866	1686	1565	1505
5	2288	1896	1625	1415	2227	1866	1595	1415	1776	1565	1385	1746	1535	1385	1686	1505	1355	1294
6	2107	1716	1445	1234	2047	1686	1415	1234	1625	1385	1234	1565	1355	1204	1505	1324	1204	1144
7	1957	1535	1264	1084	1896	1505	1264	1084	1475	1234	1084	1415	1234	1084	1385	1204	1054	993
8	1806	1415	1144	963	1776	1385	1144	963	1355	1114	963	1324	1114	963	1264	1084	963	903
9	1686	1294	1054	873	1656	1264	1023	873	1234	1023	873	1204	993	873	1174	993	873	813
10	1595	1204	963	783	1565	1174	963	783	1144	933	783	1114	933	783	1084	903	783	722

