

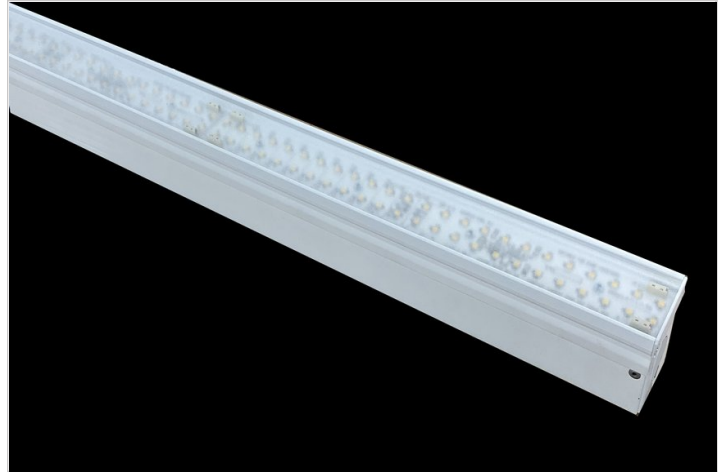
Cove-200

COVE

TYPE
PROJECT

Overview

- Same as Cove 100 but higher lumen output.
- 2 ft., 3 ft., 4 ft., 6 ft., and 8 ft.
- Tool-less snap-on gear tray
- Die formed 20GA steel housing
- Quick connect wiring system available
- Integral 0-10V dimming driver standard
- 120° Beam spread standard



Cove-200

COVE

TYPE
PROJECT

Ordering Format

PART NUMBER: CV2

Size	Lumens Indirect	CCT Available	CRI Available	Optics
2 = 2 Feet	I15 = 1500 LPF	27 = 2700 Kelvins	80 = 80-85 CRI	cl = Clear Lens
3 = 3 Feet	I20 = 2000 LPF	30 = 3000 Kelvins	90 = 90-95 CRI	
4 = 4 Feet		35 = 3500 Kelvins		
6 = 6 Feet		40 = 4000 Kelvins		
8 = 8 Feet		TW = Tunable White 2700-5000 Kelvins		
CL = Custom Length, add in notes				
Mounting	Driver / Voltage	Fixture Finish	Options	
SM = Surface Mount	ND1 = Non-Dim Universal 277VAC ND2 = Non-Dim Universal 277VAC ZT1 = 0-10v dimming 120v dual 1% ZT2 = 0-10v dimming 277v dual 1% LE1 = Lutron EcoSystem 1% DLC EE CCR / PWM SoftOnFadeToBlack LE5 = Lutron EcoSystem 5% DLC EE CCR CC = Custom Control - Add in notes	W = Standard White	EMD = Emergency Driver - Battery Backup 120-277VAC 3ft. Min.	

NOTES

ORDER NUMBER:

Construction & Mounting

HOUSING

Housing is extruded aluminum and can be installed first, 1/2" knockout for power is supplied on sides and bottom. Quick connects are supplied for easy contractor installation.

REFLECTOR

Integral powder-coated LED housing with clear dust lens for full light output.

FINISH

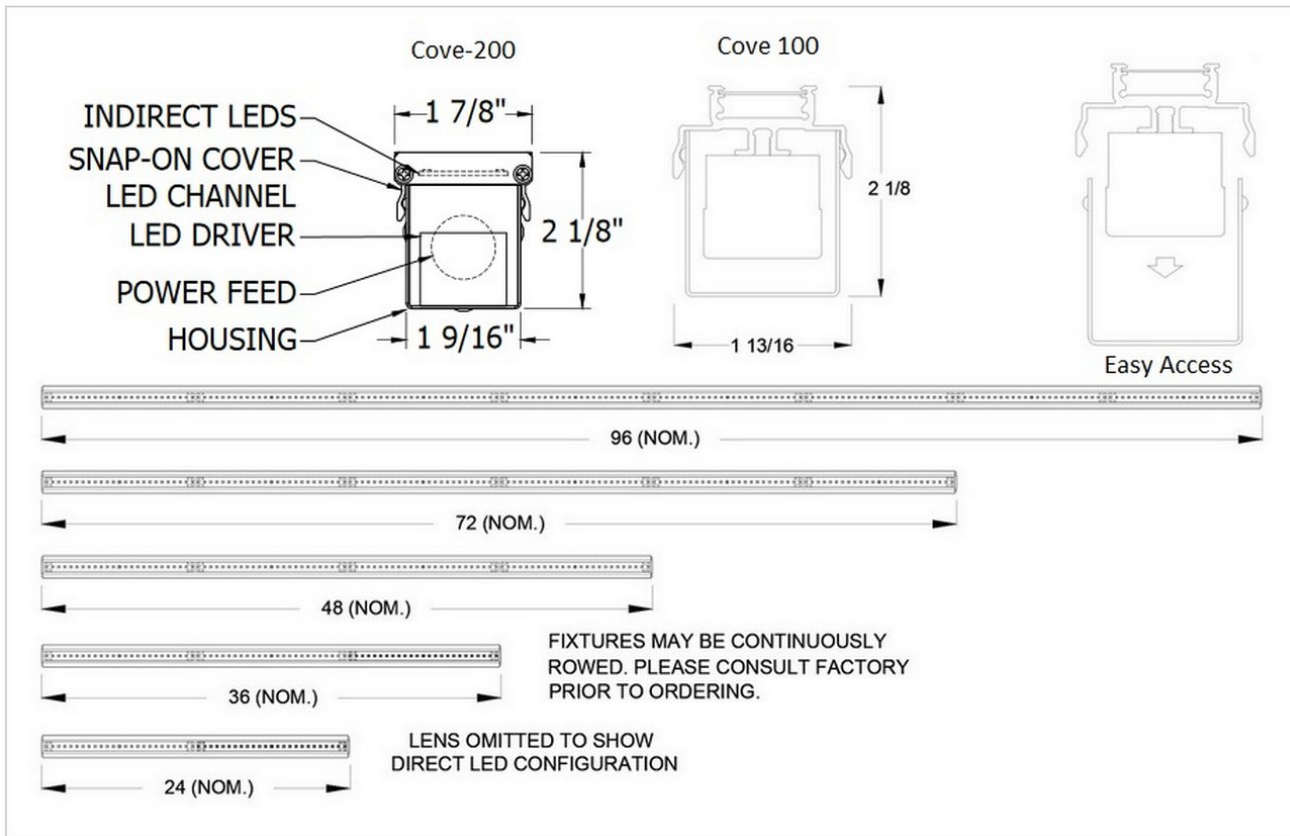
Standard powder-coated colors are white. Troffer style fixtures are not limited to white, consult factory for special applications.

OPTICS

LED channel is provided with an integral clear dust lens.

MOUNTING

Fixtures have pre-drilled holes for 1/4" screws. Cove mounted fixtures have 1/2" knockout for power feed.



Electrical / Driver

- Drivers - Our drivers are specifically selected based on fixture application to ensure ultimate reliability and long life. We use only UL recognized brands of LED drivers. Our LED drivers feature HPF (high power factor), universal voltage 110 - 277 VAC and include 0-10V dimming. Please note, 277v has longer distances from power feed to power feed then 120v.
- If required, we can supply premium drivers such as Lutron, Eldoled and others upon request. Advanced control systems compliant drivers such as POE, DALI, DMX, etc. are also available, please consult factory.
- Rated life (90% survivorship) of 50,000 hours at 50° C max. ambient (and 70° C max. case) temperature. At maximum driver load: Efficiency >84%, PF>0.9, THD
- POE - We are working with Molex/Igor POE systems. We can add a POE driver into our fixtures or remote them. Based on the fixture you select, we will notify you (or you can contact the factory) to see if we can install the P-driver or the P-driver needs to be remote. Just add POE1 in the spec and we will advise. Please keep in mind you need to specify a complete POE control system before specifying POE1.
- Our LED drivers feature HPF (high power factor), universal voltage 110 - 277 VAC and include 0-10V dimming.
- Emergency drivers are factory installed as an option, long life, high temperature, recyclable Ni-Cad battery pack with test switch and charge indicator. EMR is minimum of 90 minutes operation to meet code.
- Whip - Six feet long, wiring RHOS/Reach Compliant, 18 gauge, 600v rated, Specify wired to the fixture as an OPTION.

LED Performance

LED Output	CCT Color Temp	Watts	Lumens	Lumens per Watt	CCT Multiplier
Super High	3000	xx	xx	xx	2700 = .95 , 3000 = 1
Very Super High	3000	xx	xx	xx	3500 = 1.01, 4000 = 1.03

- The table above is a quick reference. When calculating loads make sure you add direct and indirect LPW to get total wattage. Please refer to photometric report for detailed information.
- Our light engines are precisely designed for optimal operation of LED assemblies.
- Our standard LED's CCT (correlated color temperature) range is 2700K to 4000K. Other CCT values are available upon request.
- We log LED bin codes for each project we supply to ensure color consistency and keep a record of those projects for future reference.
- CRI offered is 80+, and 90+ Note: on 90+ CRI use .85 multiplier
- Tunable white, warm dim and other special LED colors available.
- We design our own printed circuit boards to ensure high luminescence efficiency, low thermal resistance and long-term reliable operation.
- Light engines are easily replaced.
- We use only recognized brand LED's with 3 SDCM (standard deviation color matching) with high color consistency. 2 SDCM available upon request.
- LRP - "LED Reel Program" – LED's for printed circuit boards come on reels' like old 8mm projectors and they're sold in lots just like fabric. At Picasso Lighting, we have a program where we make sure all of your reels come from the same lot for each project. This ensures excellent color consistency in large open spaces.
- LED life is rated at 50,000 hours
- Custom Lumens Available

Certifications & Warranties

- Limited five-year (50,000 hours) warranty on all products.
- I.C. rated fixtures are available upon request.
- Change orders may effect delivery schedule.
- All fixtures are IBEW manufactured and assembled.
- UL and CUL listed for dry and damp locations.
- DLC® is a non-profit organization whose mission is to drive efficient lighting by defining quality, facilitating thought leadership, and delivering tools and resources to the lighting market through open dialogue and collaboration. We are currently getting our products listed with DLC. Products listed, will have DLC Logo.
- Chicago Plenum products are available upon request.
- Picasso Lighting must receive in writing any thought to be defective products discovered, no later than 4 weeks from delivery to; ttoledo@picassoltg.com. Picasso Lighting will send a field technician to the site to evaluate the said defective product. We do accept field repair from licensed electrical contractors but not without a written agreement signed by Picasso Lighting official. Failure to adhere to all warranty and certifications will void any recompense and the warranty.

Cove-200

COVE

TYPE

PROJECT



Note: Picasso lighting industries, LLC reserves the right to make any design changes which will not affect the overall appearance or performance of the product. All ceilings to be adequately reinforced by others. All fixtures to be wired by licensed electrician only. The information contained herein is the sole property of Picasso Lighting Industries, LLC and may not be used without prior written consent of Picasso Lighting Industries, LLC. The 'USGBC member logo' is a trademark owned by the U.S. Green building council and is used by permission. The logo signifies only that Picasso Lighting Industries, LLC is a USGBC member; USGBC does not review, certify, or endorse the products or services offered by its members.