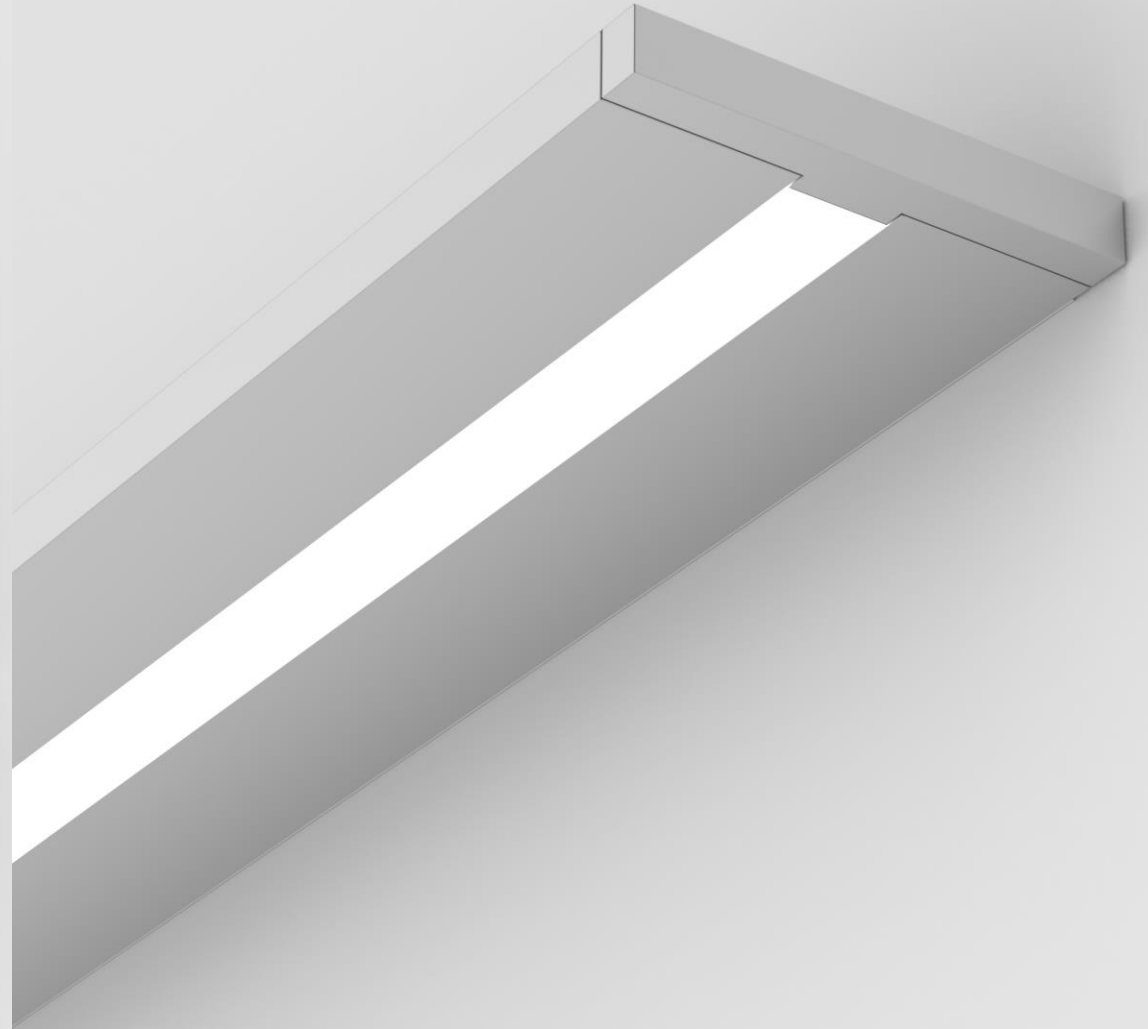
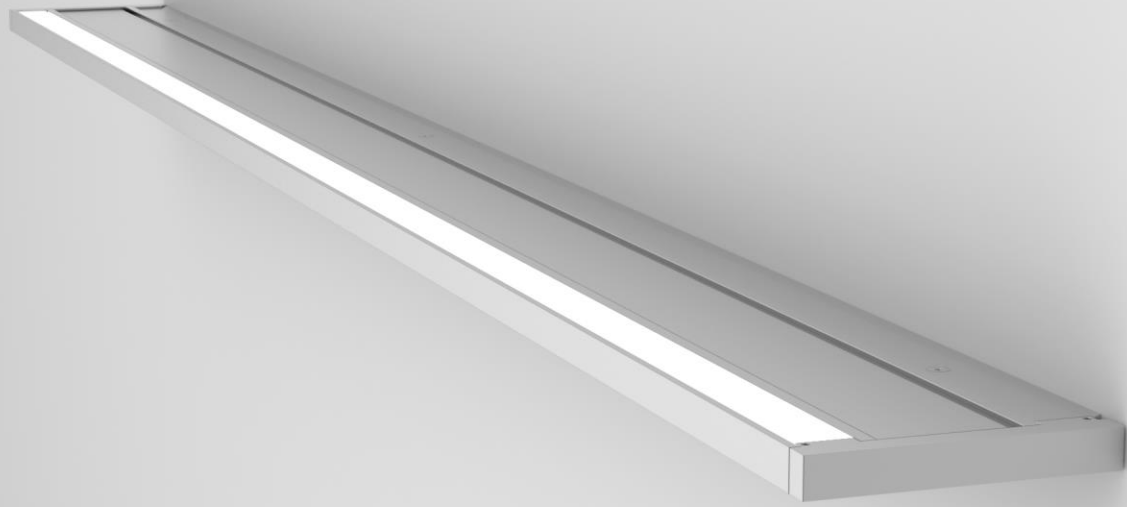
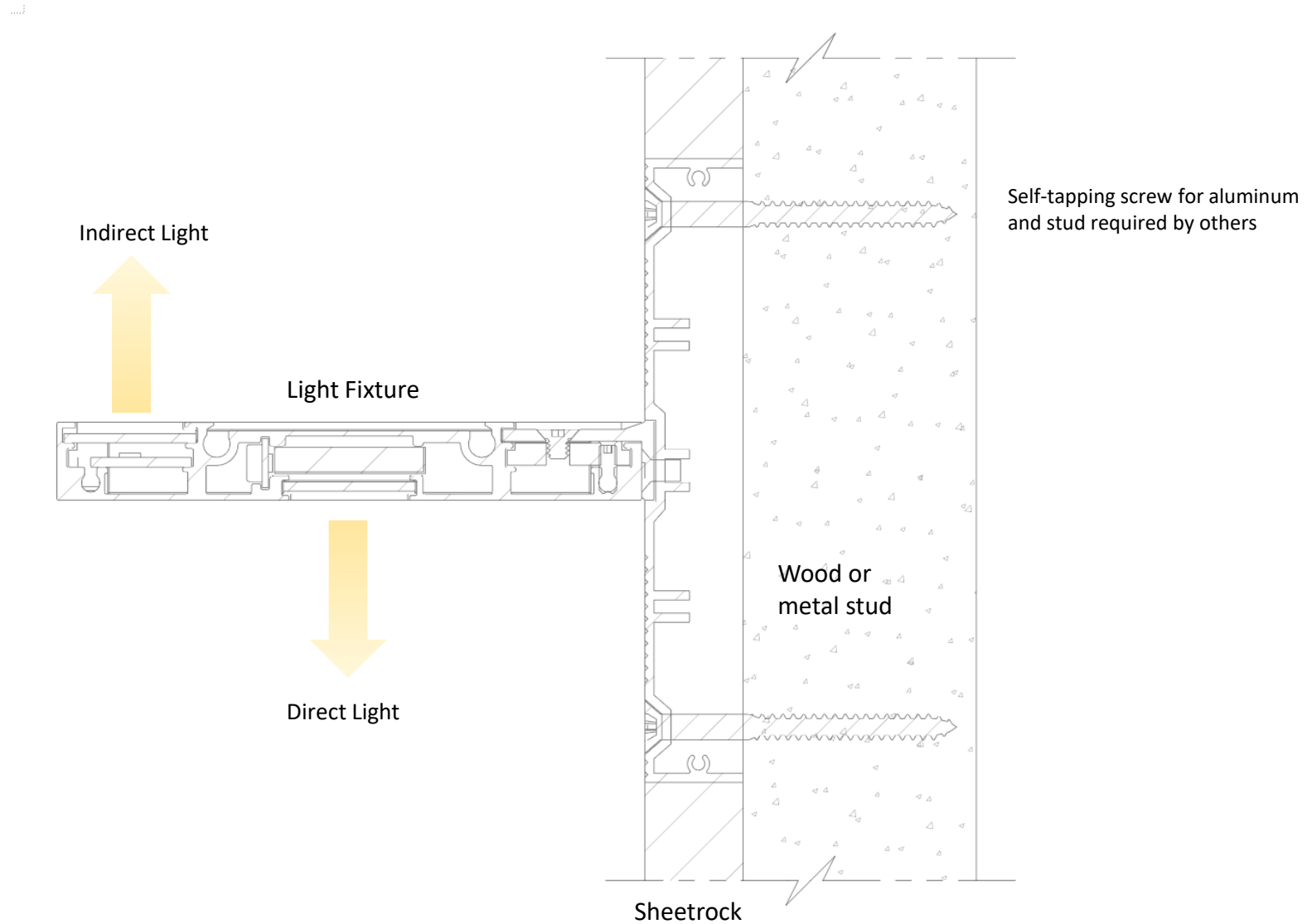


Strada – Wall



Strada - Wall (Mud-in)



Strada - Wall (Mud-in)

Wood or Metal Studs

Note: under 18"
blocking required.

16"

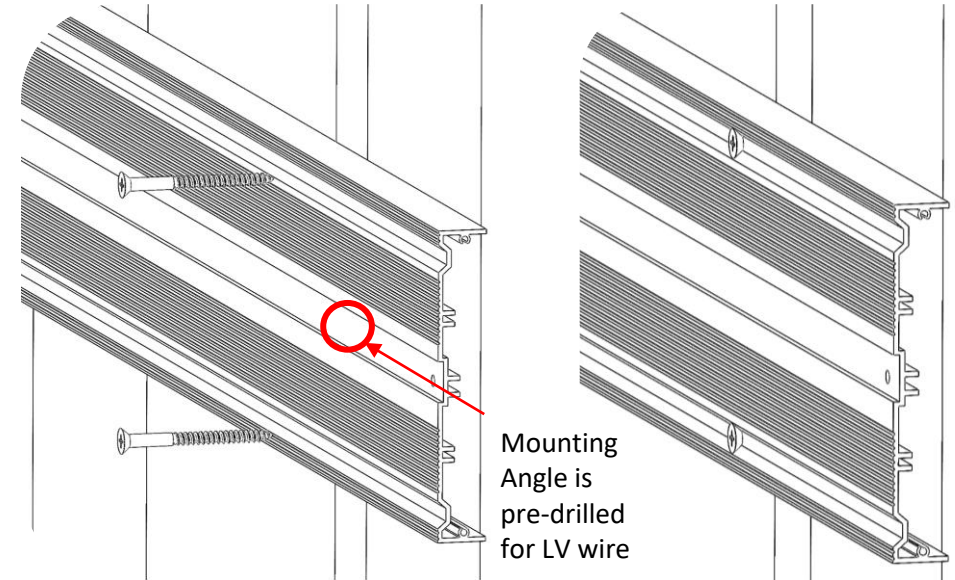
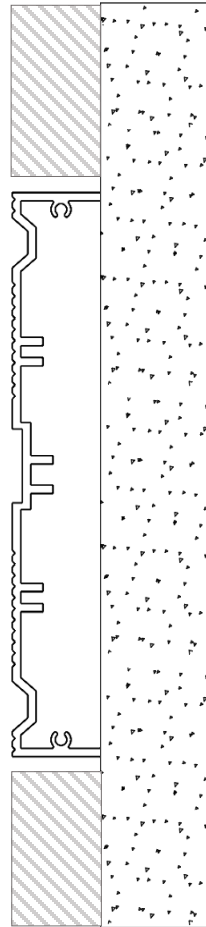
16"

Mud-in
mounting
Bracket FOR
5/8" Drywall

- Sheetrock can be installed before or after mounting bracket, EC just needs to pull through LV wiring 3" to the left on right side of mounting plate

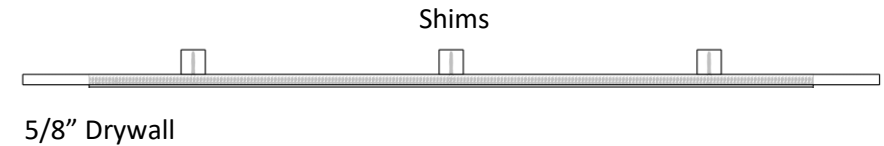
Self-tapping screw for aluminum
and stud required by others

LV Source

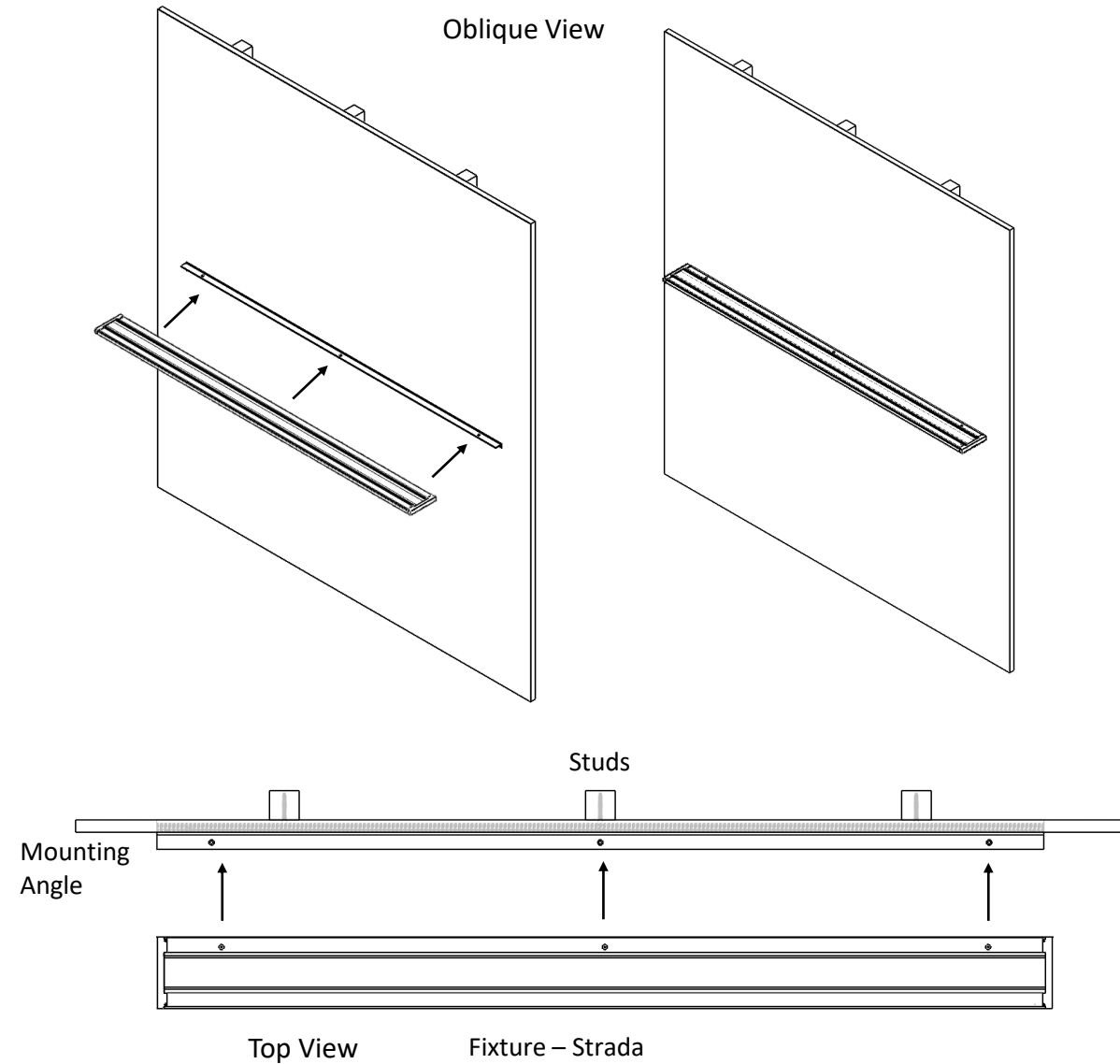
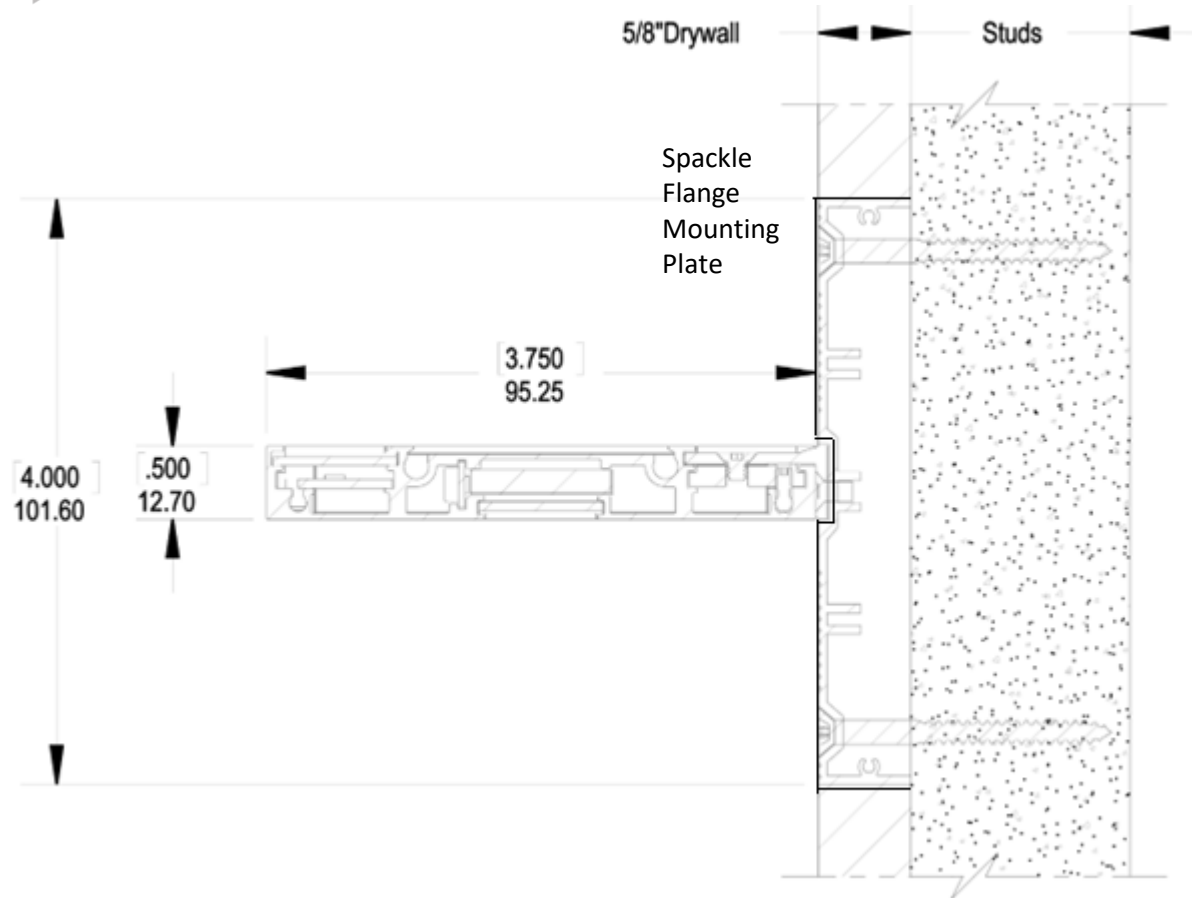


Mounting
Angle is
pre-drilled
for LV wire

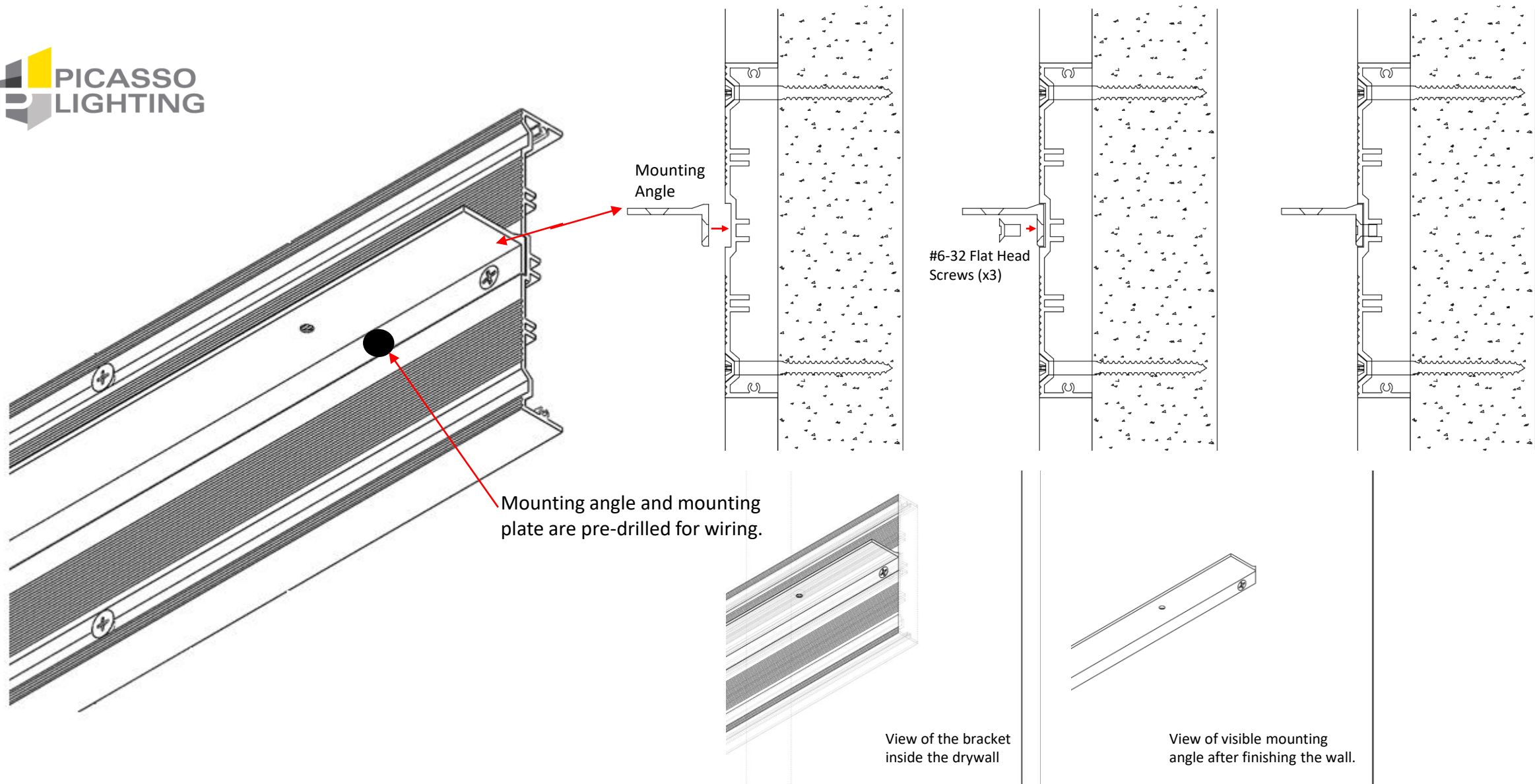
Attach the Mud-In bracket to the wall studs utilizing #8 self-tapping screws. Ensure the bracket is horizontal and level aligned with the wall surface; adjustments to the bracket are not possible once the drywall is cut and installed.



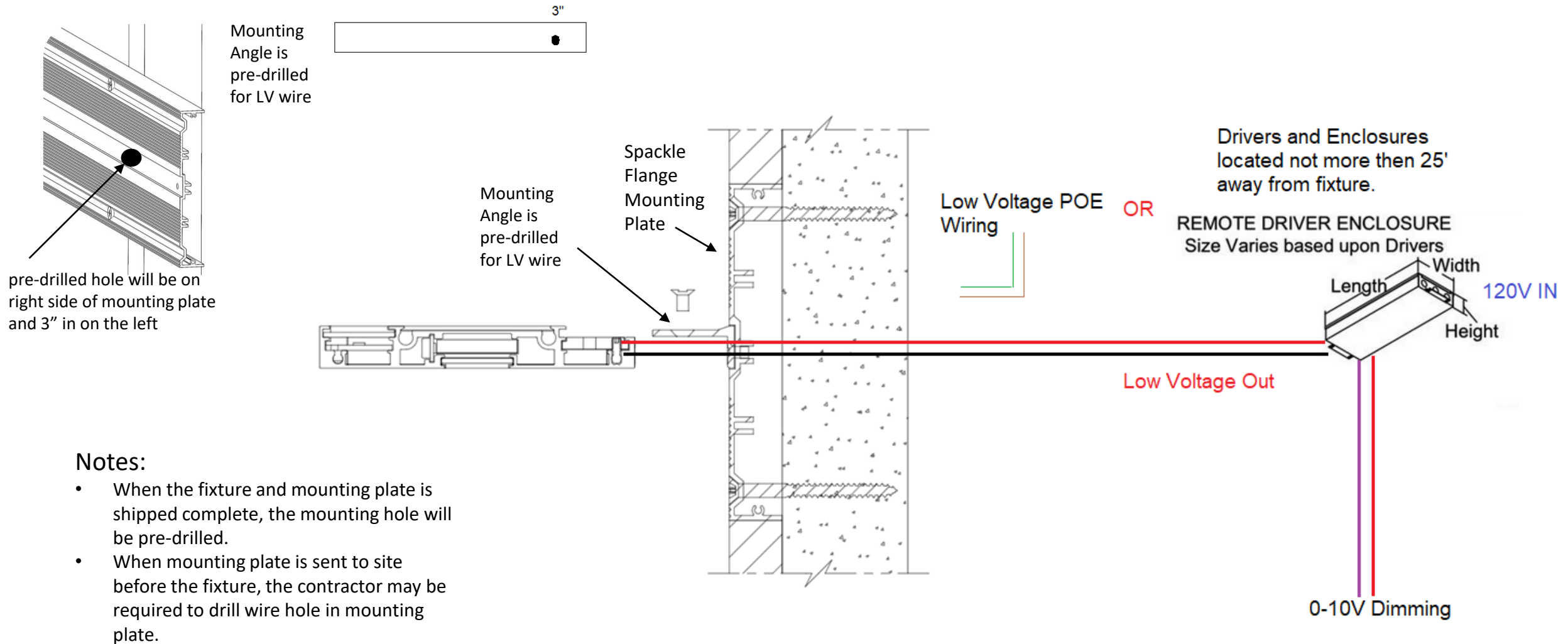
Strada - Wall (Mud-in)



Strada - Wall (Mud-in)



Strada - Wall (Mud-in)



Strada - Wall (Mud-in)

