

Sienna 1 Micro Cavity Lens, Surface Mount



INSTALLATION PROCEDURE, Individual

DO NOT DISCARD
PLEASE READ CAREFULLY BEFORE BEGINNING INSTALLATION.

Fixtures must be installed by licensed electricians in accordance with all local and national codes.

To prevent electrical shock, disconnect electrical supply before installing or servicing.

Before Beginning Installation, Locate The Following Components. Gather Required Tools.



Screwdriver

Tools Required
(Not Provided)



ESD Gloves



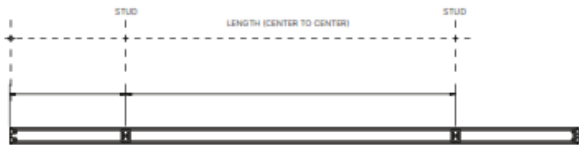
Wire Cutters

Service Hotline: 1-201-246-8188
Monday through Friday 9:00AM - 5:00PM

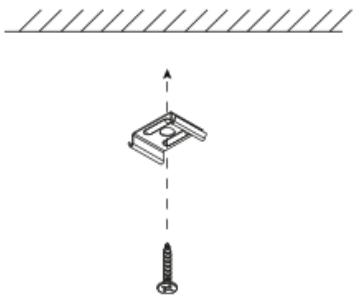
To Begin Installation:

POWER OFF

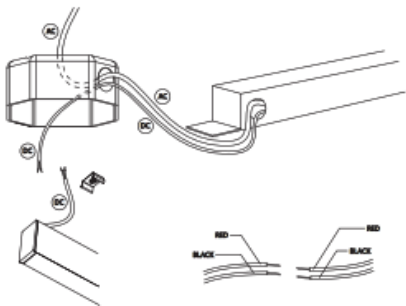
- 1 Mounting clips are adjustable. Locate a secured stud when possible for each bracket and mark the locations.



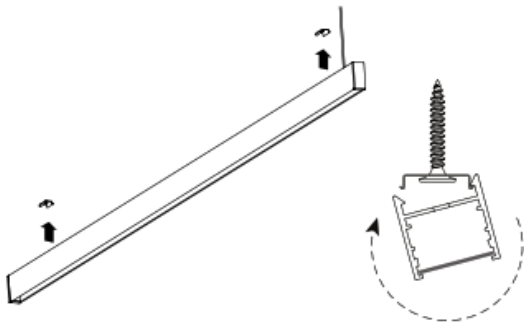
- 2 Secure the mounting clips to the mounting surface with the appropriate hardware.



- 3 Install the remote driver Box. Raise the fixture to the mounting surface and connect the wires to an approved power source or Driver Box. Refer to the wiring diagram.



- 4 Raise the fixture and engage the mounting clips. The fixture will click when properly seated.



- 5 Final Installation



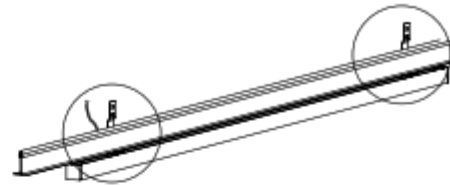
Sienna 1 Micro Cavity Lens, Surface Mount



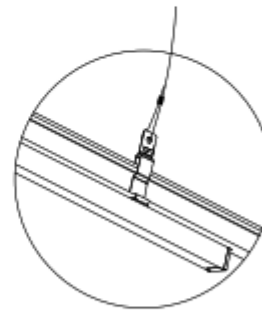
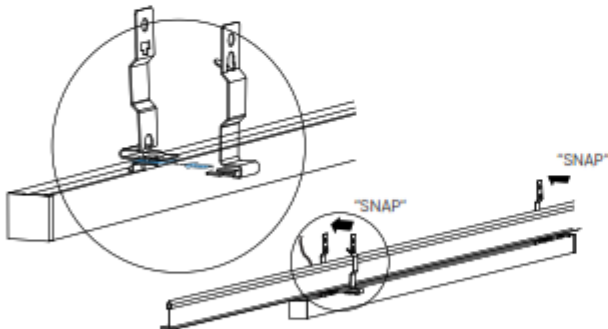
PICASSO LIGHTING

INSTALLATION PROCEDURE, Individual T-Bar

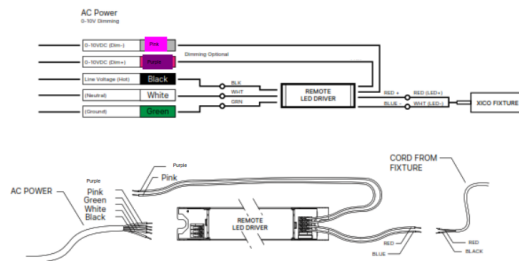
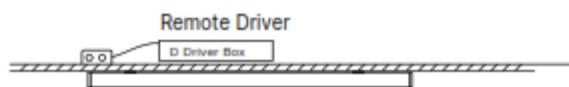
- 1 The fixture comes fully assembled with TBar clips for your grid ceiling framework, if specified.
- 2 Bring fixture up to the desired location on the TBar. Allow wires to pass through framework.



- 3 Engage the TBar clips by inserting the loose clip below the clip base that is mounted to the fixture. The clips will SNAP when fully engaged.
- 4 Secure the fixture to an appropriate structural support beam or hanger.



- 5 Locate and install the remote driver. Connect the fixtures DC cables to the Driver box. Connect AC power to the driver. Refer to the wiring diagram.



Installation and maintenance of the luminaire may only be performed by qualified and licensed electricians in accordance with all applicable codes and standards.

Picasso Lighting Industries, LLC assumes no responsibility or liability for any unauthorized changes or modifications to the luminaire.

The luminaire is not intended for outdoor use.

Picasso Lighting Industries, LLC. shall assume no responsibility or liability for the integrity of the mounting surface and structure as well as the integrity of all components not provided by Picasso Lighting Industries, LLC.

Turn off line voltage and allow luminaire to completely cool before performing any maintenance including routine cleaning of luminaire.

Avoid touching LED light emitting surfaces while installing, replacing or providing maintenance to the luminaire.

Luminous flux and connected electrical load are subject to an initial tolerance of +/- 10%.

Color temperature (k) is subject to a tolerance of +/- 150k from the nominal value.

Any component contained in this luminaire can only be replaced by the manufacturer or an agent thereof.

Keep these **INSTALLATION INSTRUCTIONS** in a secure and readily accessible place for any future maintenance or for reference.

DO NOT DISCARD
PLEASE READ CAREFULLY BEFORE BEGINNING INSTALLATION.

Service Hotline: 1-201-246-8188
Monday through Friday 9:00AM - 5:00PM