

ANELLO RECESSED SPACKLE FLANGE



INSTALLATION PROCEDURE

DO NOT DISCARD

PLEASE READ CAREFULLY BEFORE BEGINNING INSTALLATION.

Fixtures must be installed by licensed electricians in accordance with all local and national codes.

To prevent electrical shock, disconnect electrical supply before installing or servicing.

Before beginning installation, locate the following components. Gather required tools.

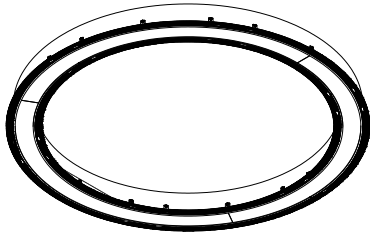


Fig. 1. Assembled fixture
Shipping braces removed.

Locate clear properly lit area for fixture assembly. Area has to be large enough for complete fixture assembly. Some fixture parts, as lenses, are fragile. Pad area which might be in contact with fragile components.

Shipping boxes are clearly labeled with component context and number. Open boxes to recognize fixture components. Unpack and remove fixture components from boxes only before actual assembly to avoid damage.

Tools Required (Not Provided)



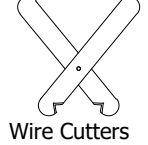
Screwdriver



Allen Key



ESD Gloves



Wire Cutters

Single segment fixture installation

POWER OFF

NOTE: ALL FIXTURE COMPONENTS BOX TO BE INSTALLED AND WIRED ACCORDING TO NEC, FEDERAL AND LOCAL REGULATIONS BY CERTIFIED (QUALIFIED) ELECTRICIAN.

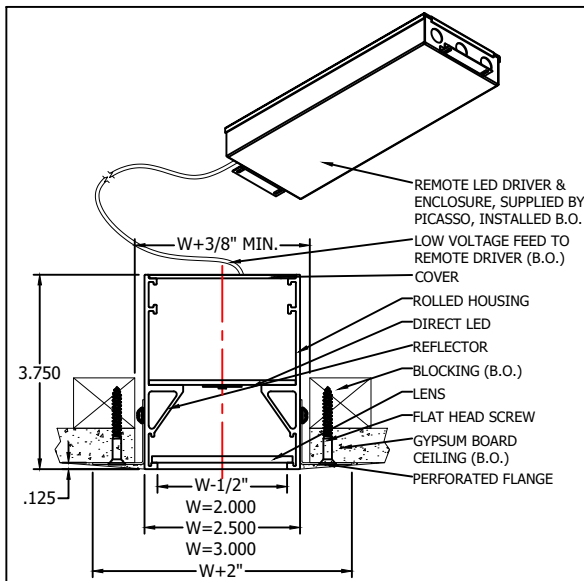


Fig. 1 Installed section details.

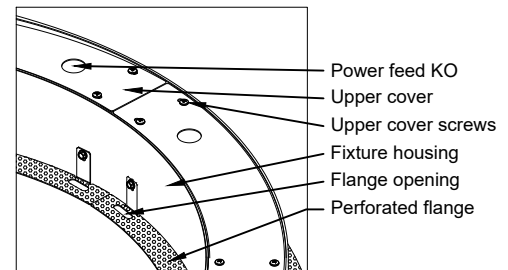


Fig. 2. Power feed location.

1. Anello fixtures comes with width (W) 2" or 2-1/2" or 3". Standard sizes are 3', 4', 5', and 6' nominal diameter. These fixtures come as fully assembled ring. Custom sizes larger 6' come in the segments and have to be assembled before installation. Fixture with (3) or more segments might be assembled within the ceiling if condition permitted. Custom Gypsum board cutout width should be 3/8" larger than fixture width (see Fig. 1 for details).

2. Fixture cutout should have blocking frame behind for fixture support. Blocking to be adequately attached to structural elements to support fixture weight.

3. Locate fixture power feed 7/8" KO on upper cover at left side (Fig. 2). Remove and save upper cover screws. Remove upper cover.

4. Open KO and install whip (Fig. 3). Splice LED feed and ground wires. Make sure to follow color codes (Fig. 3).

5. Replace upper cover and cover screws.

6. Insert fixture into cutout. Fixture comes with shipping braces (Fig.4) installed. Do not remove braces till complete fixture installation. Secure fixture through perforated flanges to blocking behind gypsum board. Use flat head screws. Screw heads to seat even with perforated flange.

Installation and maintenance of the **Pendant fixture** may only be performed by qualified and licensed electricians in accordance with all applicable codes and standards. Picasso Lighting Industries, LLC assumes no responsibility or liability for any unauthorized changes or modifications to the **Pendant fixture**. The **Pendant fixture** is not intended for outdoor use. Picasso Lighting Industries, LLC. shall assume no responsibility or liability for the integrity of the mounting surface and structure as well as the integrity of all components not provided by Picasso Lighting Industries, LLC. Turn off line voltage and allow fixture to completely cool before performing any maintenance including routine cleaning of fixture. UV lamp is fragile, and should be handled accordingly while installing, replacing or providing maintenance to the fixture. Luminous flux and connected electrical load are subject to an initial tolerance of +/- 10%. Any component contained in this fixture can only be replaced by the manufacturer or an agent thereof.

Keep these **INSTALLATION INSTRUCTIONS** in a secure and readily accessible place for any future maintenance or for reference.

DO NOT DISCARD

Service Hotline: (201) 246-8188
Monday through Friday 9:00AM - 5:00PM

ANELLO RECESSED SPACKLE FLANGE



INSTALLATION PROCEDURE

DO NOT DISCARD

PLEASE READ CAREFULLY BEFORE BEGINNING INSTALLATION.

Fixtures must be installed by licensed electricians in accordance with all local and national codes.

To prevent electrical shock, disconnect electrical supply before installing or servicing.

Single segment fixture installation (continuation)

POWER OFF

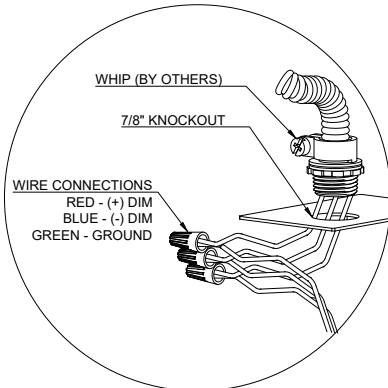


Fig. 3 Wiring details.

- Shipping braces intended to keep fixture opening to size. Remove shipping braces only after perforated flanges completely attached to blocking. To remove brace: loose brace screw and turn brace plate 90°.
- Spackle fixture flanges as shown on Fig. 1. Make sure to fill and smooth all perforated flange openings (Fig. 2).
- Adjust lens(es) to seat flat in the housing.
- See 150-000037 Remote box Installation instruction for remote power enclosure installation and wiring. See submittal drawing(s) for maximum remote box distance from installed fixture(s).

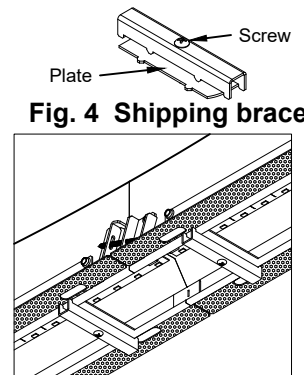


Fig. 4 Shipping brace.

Fig. 5 Shipping brace before removal.

Multiple segments fixture installation

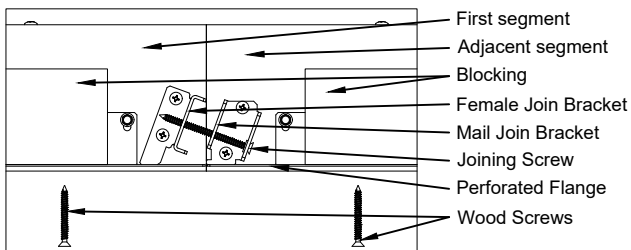


Fig. 6. Segment Joining.

- Ceiling cutout for multiple segments fixture has to be slightly larger to allow at least 5/8" housing movement for aligner plates engagement (Fig. 7).
- Start with segment with power feed and install it first unless otherwise instructed in submittal drawing. Follow steps 1 through 7 of single segment fixture installation instruction. Make sure to keep shipping braces in place till complete segment installation.
- Open end of the first segment (shown on Fig. 7 at left) has Aligner Plates and both Female and Male Joiner brackets. Locate adjoining fixture segment (shown on Fig. 6 at right) and place it into the ceiling cutout next to the first segment.

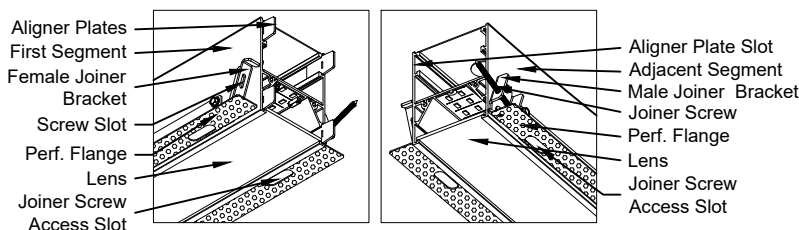


Fig. 7. Joiner Details.

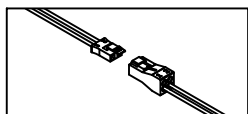


Fig. 8. LED Feed Connectors.

- complete alignment. Secure both segments to blocking with flat head screws as mentioned on Single segment fixture installation.
- Remove shipping braces and adjust lenses to avoid any gap in between them.
- Repeat installation steps for all subsequent segments.
- Spackle perforated flanges. Make sure to fill joiner screw access slots for sooth spackling.

Installation and maintenance of the **Pendant fixture** may only be performed by qualified and licensed electricians in accordance with all applicable codes and standards. Picasso Lighting Industries, LLC assumes no responsibility or liability for any unauthorized changes or modifications to the **Pendant fixture**. The **Pendant fixture** is not intended for outdoor use. Picasso Lighting Industries, LLC. shall assume no responsibility or liability for the integrity of the mounting surface and structure as well as the integrity of all components not provided by Picasso Lighting Industries, LLC. Turn off line voltage and allow fixture to completely cool before performing any maintenance including routine cleaning of fixture. UV lamp is fragile, and should be handled accordingly while installing, replacing or providing maintenance to the fixture. Luminous flux and connected electrical load are subject to an initial tolerance of +/- 10%. Any component contained in this fixture can only be replaced by the manufacturer or an agent thereof.

Keep these **INSTALLATION INSTRUCTIONS** in a secure and readily accessible place for any future maintenance or for reference.

DO NOT DISCARD

Service Hotline: (201) 246-8188
Monday through Friday 9:00AM - 5:00PM