

# NUBEZ PATTERNS (GRID/POCKET)



PICASSO LIGHTING

## INSTALLATION PROCEDURE

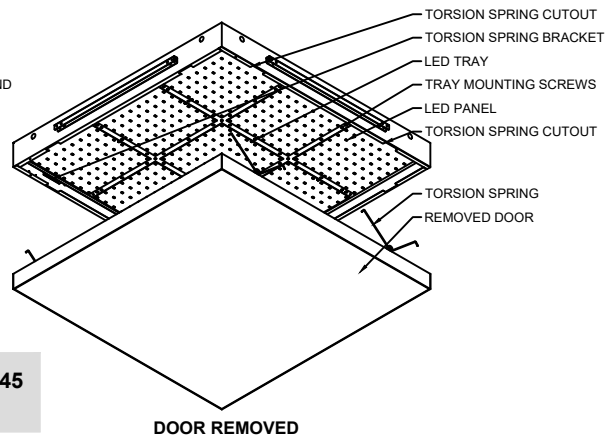
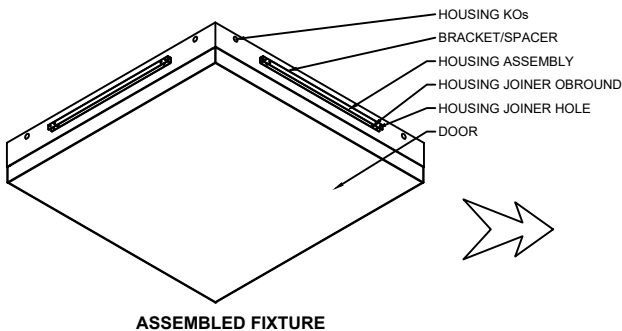
**DO NOT DISCARD**

**PLEASE READ CAREFULLY BEFORE BEGINNING INSTALLATION.**

Fixtures must be installed by licensed electricians in accordance with all local and national codes.

To prevent electrical shock, disconnect electrical supply before installing or servicing.

**Before Beginning Installation, Locate The Following Components. Gather Required Tools.**



Consult factory for any custom patterns. See 150-000045 for sparkle flange pattern installation instruction.

**Tools Required (Not Provided)**



Screwdriver



ESD Gloves

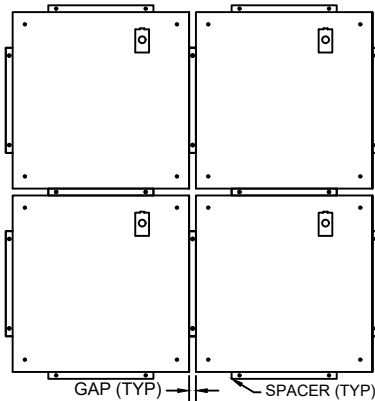


Wire Cutters

## Installation:

**POWER OFF**

### NUBEZ CLUSTERS



1. Make sure power is OFF.

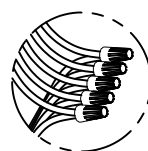
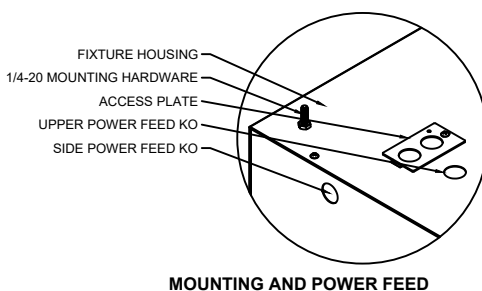
2. NUBEZ Door Frames are typically supplied and packed separately for Field Installation.

3. Reference Project Submittal Drawing for Orientation of Nubez Fixtures to be installed individually or in Clusters as Shown. Fixtures installed in Clusters must use the spacers on the Housings provided to maintain the proper distance between fixtures.

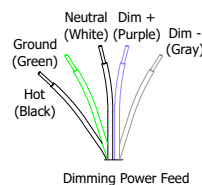
4. Install Nubez Housing assembly into ceiling opening. Fixture comes with 1/4-20 threaded rods preinstalled (see at left) for installation to structure using rods. For Surface mount installation Remove mounting hardware from housing and Use the  $\phi 5/16$ " housing mounting holes for this type of installation. Optional: Fixture also could be supported through the hole in the external spacer/support bracket.

5. Align Bottom edge of removable Door Template to Finish Ceiling Plane. The Template is used for installing the Housing assembly to allow adequate clearance for the DOOR Frame to be Installed Flush with the Finished Ceiling.

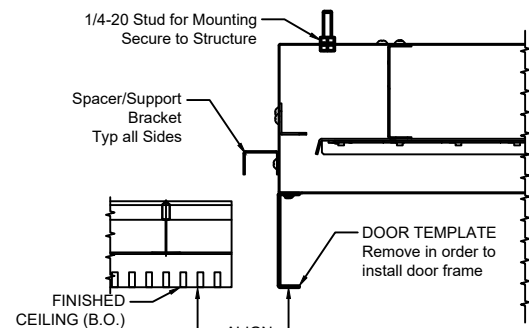
6. Install power feed as required thru 7/8  $\phi$  KO in Access Plate. Each Fixture requires a separate Power Feed.



Wire Splicing. (Wire Nuts (B.O.))



Dimming Power Feed



Keep these **INSTALLATION INSTRUCTIONS** in a secure and readily accessible place for any future maintenance or for reference.

**DO NOT DISCARD**

**PLEASE READ CAREFULLY BEFORE BEGINNING INSTALLATION.**

Service Hotline: (201) 246-8188  
Monday through Friday 9:00AM - 5:00PM

# NUBEZ PATTERNS (GRID/POCKET)



PICASSO LIGHTING

## INSTALLATION PROCEDURE

### DO NOT DISCARD

PLEASE READ CAREFULLY BEFORE BEGINNING INSTALLATION.

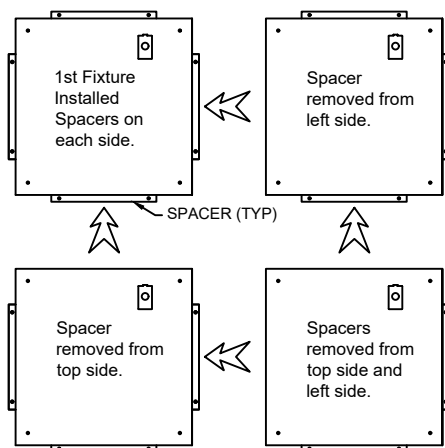
Fixtures must be installed by licensed electricians in accordance with all local and national codes.

To prevent electrical shock, disconnect electrical supply before installing or servicing.

### Installation:

**POWER OFF**

#### NUBEZ CLUSTERS



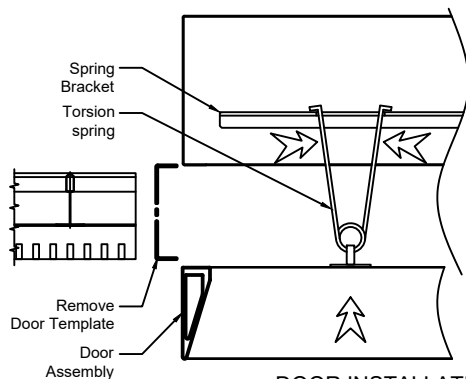
#### Cluster Installation

7. After Fixture "A" is installed in Cluster, Prepare adjacent fixtures to be installed by removing the spacer from the connecting Side of the housing, save the screws to be used for joining housing sections.

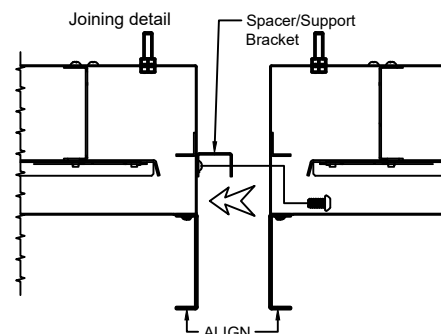
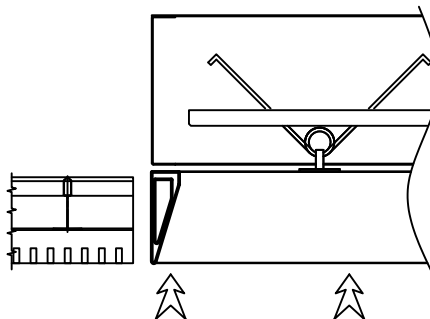
8. Align and loosely Install adjacent housings (repeat steps 4-6) for each Housing. Housing must be Aligned and Joined Before securing. Locate joiner holes and slots on the sides of the housings. Insert 8-32 screws into joiner hole in housing thru to adjacent housing spacer and secure. Tighten joining screws till the Spacer brackets are equally aligned and the space between the fixtures (as shown on Submittal Drawing is maintained) typically 7/8" spacing, however the dimension may vary from project to project.

9. Check fixture installation for alignment and adjust accordingly as each section is installed.

10. After all fixture housings have been installed. remove all the Door Templates from the Installed Housings.



#### DOOR INSTALLATION



11. Install the Door Frames (use protective Gloves) by squeezing the torsion springs and inserted them into the torsion spring brackets in the Housing. Note: install spring with the lower tabs engaged and then repeat on the opposite side so door is suspended. Then carefully push the door upwards to engage into the housing assembly. Repeat as required.

Installation and maintenance of the **NUBEZ** luminaire may only be performed by qualified and licensed electricians in accordance with all applicable codes and standards. Picasso Lighting Industries, LLC assumes no responsibility or liability for any unauthorized changes or modifications to the **NUBEZ** luminaire. The **NUBEZ** luminaire is not intended for outdoor use. Picasso Lighting Industries, LLC. shall assume no responsibility or liability for the integrity of the mounting surface and structure as well as the integrity of all components not provided by Picasso Lighting Industries, LLC. Turn off line voltage and allow luminaire to completely cool before performing any maintenance including routine cleaning of luminaire. Avoid touching LED light emitting surfaces while installing, replacing or providing maintenance to the luminaire. Luminous flux and connected electrical load are subject to an initial tolerance of +/- 10%. Color temperature (K) is subject to a tolerance of +/- 150K from the nominal value. Any component contained in this luminaire can only be replaced by the manufacturer or an agent thereof.

Keep these **INSTALLATION INSTRUCTIONS** in a secure and readily accessible place for any future maintenance or for reference.

### DO NOT DISCARD

PLEASE READ CAREFULLY BEFORE BEGINNING INSTALLATION.

Service Hotline: (201) 246-8188  
Monday through Friday 9:00AM - 5:00PM