



**PICASSO LIGHTING INDUSTRIES, LLC**  
46 Sellers Street, Kearny, NJ 07032  
201.246.8188

## **Indoor Distribution Test Report**

### **Picasso Lighting Industries, LLC**

46 Sellers St.  
Kearny, NJ 07032

#### **Photopia Photometric Analysis & Optical Design**

**Catalog Number**  
**JAC-L-14-T3-30K-80-OPL**  
(White Housing – Direct – Opal Lenses)

Test Number

**IES-P00066**

Test Date

2017-03-02

The results contained in this report pertain only to the tested sample.  
This report shall not be reproduced, except in full, without written approval of Picasso Lighting Industries, LLC.

<b>Luminaire Description:</b>	White, Sheet Metal Housing, Direct w/ Opal Lenses
<b>Lamp:</b>	LED (3000K, 80+ CRI)
<b>Installation:</b>	Recess Mounted
<b>Luminous Length:</b>	46.56 in
<b>Luminous Width:</b>	10.63 in
<b>Luminous Height:</b>	0.00 in

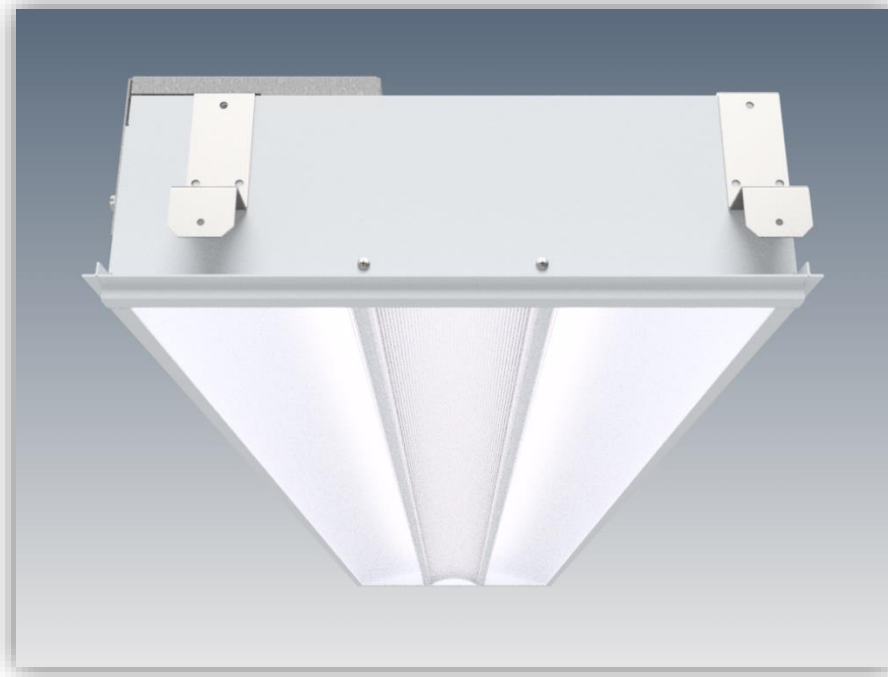


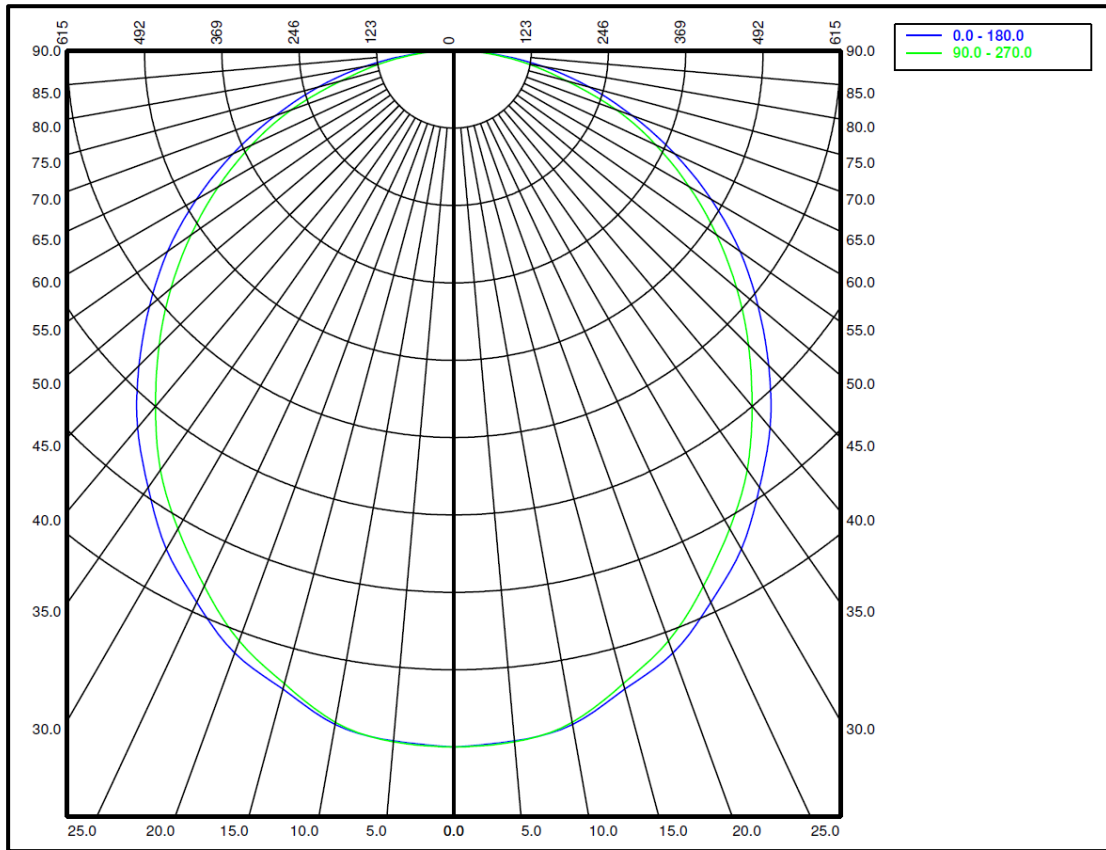
Image may differ slightly from actual unit

#### **Summary of Results**

<b>System Power:</b>	30.2W
<b>Total Luminaire Output:</b>	3012 Lumens
<b>Luminaire Efficacy:</b>	100 lm/W
<b>Max Candela:</b>	1106.14 Candela

Calculated results may not be representative of field performance  
Ballast factors have not been applied

**Polar Plot**



**Zonal Lumen Summary**

Zone	Lumens	% Fixture	Zone	Lumens	% Fixture
0-10	104.32	3.5%	90-100	0	0.0%
10-20	295.59	9.8%	100-110	0	0.0%
20-30	439.31	14.6%	110-120	0	0.0%
30-40	518.75	17.2%	120-130	0	0.0%
40-50	527.29	17.5%	130-140	0	0.0%
50-60	472.21	15.7%	140-150	0	0.0%
60-70	364.69	12.1%	150-160	0	0.0%
70-80	218.24	7.2%	160-170	0	0.0%
80-90	71.98	2.4%	170-180	0	0.0%
0-90	3012.38	100.0%	0-180	3012.38	100.0%

### Candela Distribution

#### Horizontal Angle (Degrees)

	0	22.5	45	67.5	90	112.5	135	157.5	180	202.5	225	247.5	270	292.5	315	337.5
0	1106	1106	1106	1106	1106	1106	1106	1106	1106	1106	1106	1106	1106	1106	1106	1106
5	1100	1098	1098	1092	1102	1092	1098	1098	1100	1098	1098	1092	1102	1092	1098	1098
10	1087	1082	1082	1082	1083	1082	1082	1082	1087	1082	1082	1082	1083	1082	1082	1082
15	1050	1049	1050	1045	1041	1045	1050	1049	1050	1049	1050	1045	1041	1045	1050	1049
20	1018	1012	1005	998	998	998	1005	1012	1018	1012	1005	998	998	998	1005	1012
25	967	965	952	943	939	943	952	965	967	965	952	943	939	943	952	965
30	914	907	894	881	877	881	894	907	914	907	894	881	877	881	894	907
35	847	844	829	816	813	816	829	844	847	844	829	816	813	816	829	844
40	782	773	756	743	738	743	756	773	782	773	756	743	738	743	756	773
45	708	698	682	668	663	668	682	698	708	698	682	668	663	668	682	698
50	632	621	604	589	587	589	604	621	632	621	604	589	587	589	604	621
55	555	541	524	514	510	514	524	541	555	541	524	514	510	514	524	541
60	473	462	445	435	432	435	445	462	473	462	445	435	432	435	445	462
65	387	378	365	357	355	357	365	378	387	378	365	357	355	357	365	378
70	303	298	287	279	276	279	287	298	303	298	287	279	276	279	287	298
75	223	218	206	193	187	193	206	218	223	218	206	193	187	193	206	218
80	145	138	123	117	119	117	123	138	145	138	123	117	119	117	123	138
85	68	62	58	58	58	58	58	62	68	62	58	58	58	58	58	62
90	14	15	17	17	17	17	17	15	14	15	17	17	17	17	17	15

### Average Luminance (cd/m<sup>2</sup>)

#### Horizontal Angle (Degrees)

ANGLES	0-Deg	45-Deg	90-Deg
0	3466	3466	3466
45	3134	3018	2934
55	3030	2862	2782
65	2869	2707	2629
75	2699	2496	2257
85	2430	2095	2080

**Coefficients of Utilization – Zonal Cavity Method**

Effective Floor Cavity Reflectance 20%																		
RC	80				70				50			30			10			0
RW	70	50	30	10	70	50	30	10	50	30	10	50	30	10	50	30	10	0
RCR	Values are in Lumens delivered to the Task Plane																	
0	3585	3585	3585	3585	3494	3494	3494	3494	3344	3344	3344	3193	3193	3193	3073	3073	3073	3012
1	3283	3133	2982	2862	3193	3043	2922	2832	2922	2832	2741	2802	2711	2651	2711	2621	2561	2500
2	2982	2711	2500	2350	2892	2651	2470	2320	2561	2380	2259	2470	2320	2199	2350	2259	2139	2079
3	2711	2380	2139	1928	2621	2350	2109	1928	2259	2048	1898	2169	1988	1868	2079	1958	1838	1747
4	2470	2109	1838	1657	2410	2079	1838	1627	1988	1777	1597	1928	1747	1597	1868	1687	1566	1506
5	2289	1898	1627	1416	2229	1868	1597	1416	1807	1566	1386	1747	1536	1386	1687	1506	1356	1295
6	2109	1717	1446	1235	2048	1687	1416	1235	1627	1386	1235	1566	1356	1205	1536	1356	1205	1145
7	1958	1536	1295	1084	1898	1536	1265	1084	1476	1235	1084	1446	1235	1084	1386	1205	1054	994
8	1807	1416	1145	964	1777	1386	1145	964	1356	1115	964	1325	1115	964	1265	1084	964	904
9	1717	1295	1054	874	1657	1265	1054	874	1235	1024	874	1205	1024	874	1175	994	874	813
10	1597	1205	964	813	1566	1175	964	813	1145	934	783	1115	934	783	1084	904	783	723

