

INSTALLATION PROCEDURE (Sheet 1 of 1)

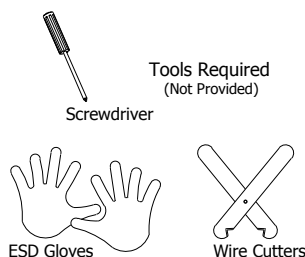
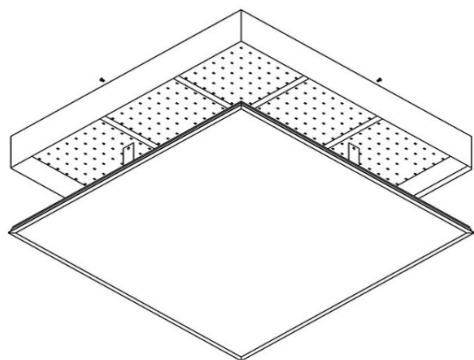
DO NOT DISCARD

PLEASE READ CAREFULLY BEFORE BEGINNING INSTALLATION.

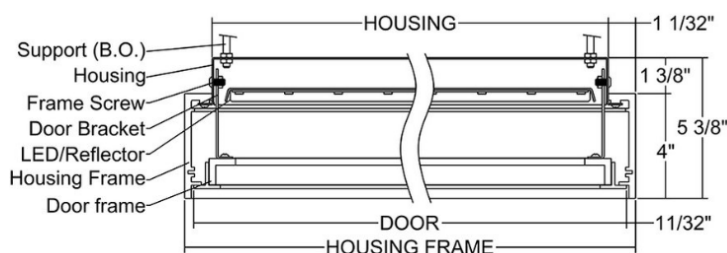
Fixtures must be installed by licensed electricians in accordance with all local and national codes.

To prevent electrical shock, disconnect electrical supply before installing or servicing.

Before Beginning Installation, Locate The Following (3) Components. Gather Required Tools.



Service Hotline: 1-201-246-8188
Monday through Friday 9:00AM - 5:00PM

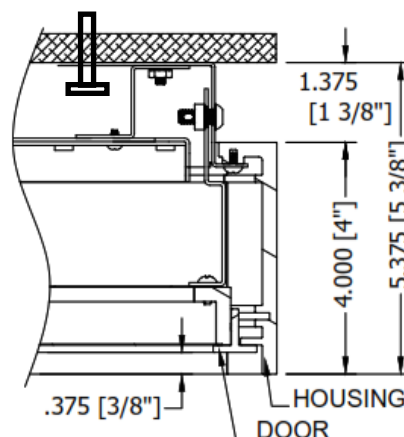
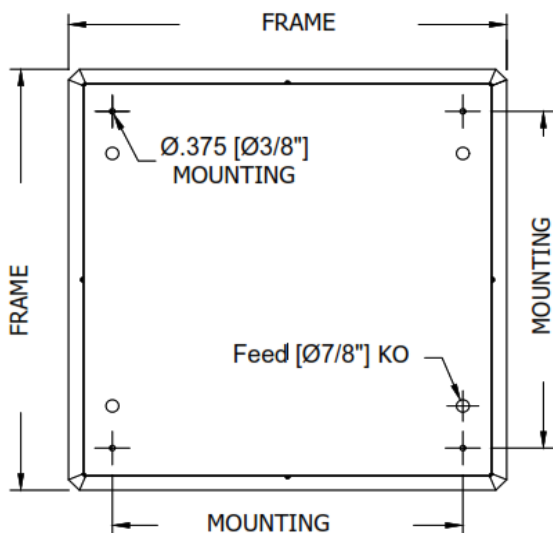


To Begin Installation:

POWER OFF

Install Upper Housing
Secure to structure thru Mounting Holes
allow Clearance for Power Feed

Secure Mounting Hardware to Structure
and/or blocking above the Fixture



Install Door
Note: Access to perimeter of Upper Housing Required to access Screws for Door

Make Power Connections

