

INSTALLATION PROCEDURE (Sheet 1 of 4)

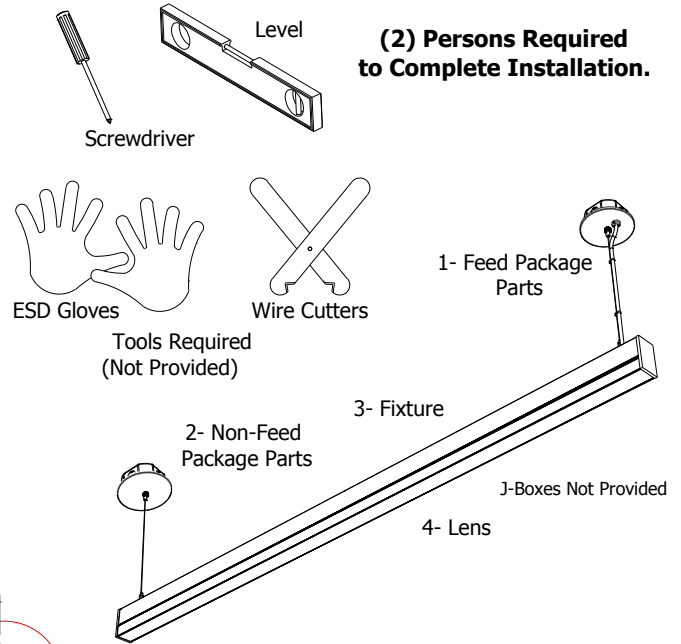
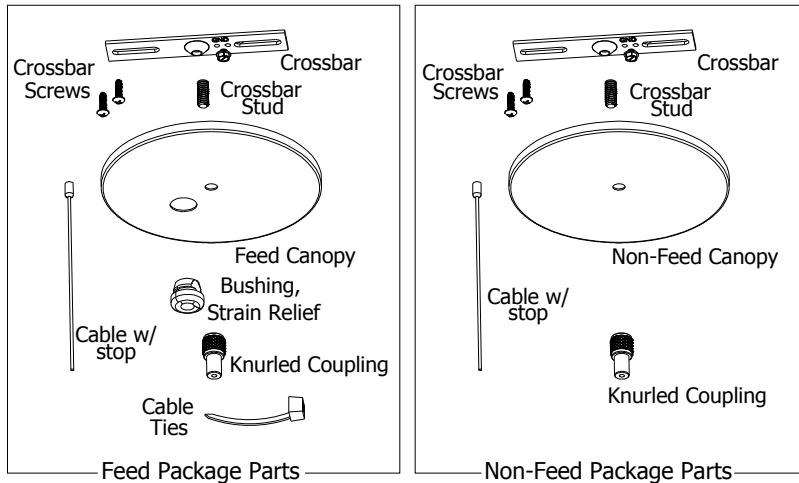
DO NOT DISCARD

PLEASE READ CAREFULLY BEFORE BEGINNING INSTALLATION.

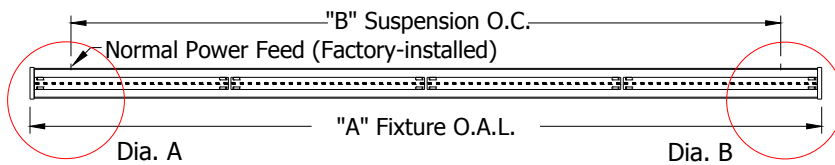
Fixtures must be installed by licensed electricians in accordance with all local and national codes.

To prevent electrical shock, disconnect electrical supply before installing or servicing.

Before Beginning Installation, Locate the Following (4) Components, Gather Required Tools:



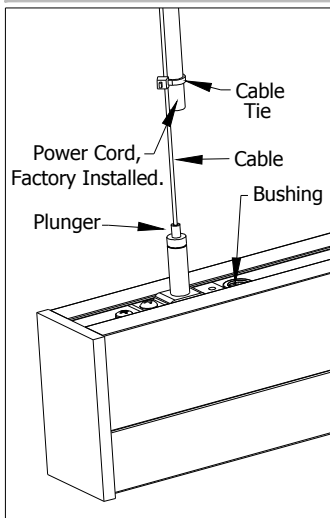
To Begin Installation, Locate Feed and Non-Feed Suspension Points:



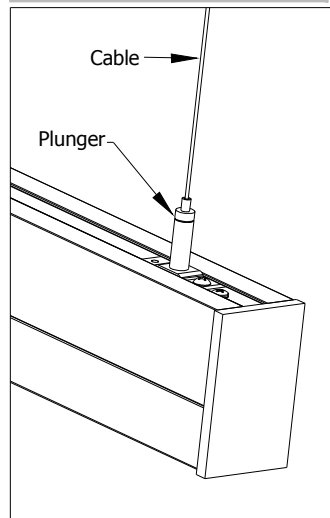
Size	"A"	"B"
8 ft.	8'-0 1/4"	7'-7 1/4"
7 ft.	7'-0 1/4"	6'-7 1/4"
6 ft.	6'-0 1/4"	5'-7 1/4"
5 ft.	5'-0 1/4"	4'-7 1/4"
4 ft.	4'-0 1/4"	3'-7 1/4"
3 ft.	3'-0 1/4"	2'-7 1/4"

Note: Locate custom fixture suspension points in accordance with approved client drawing.

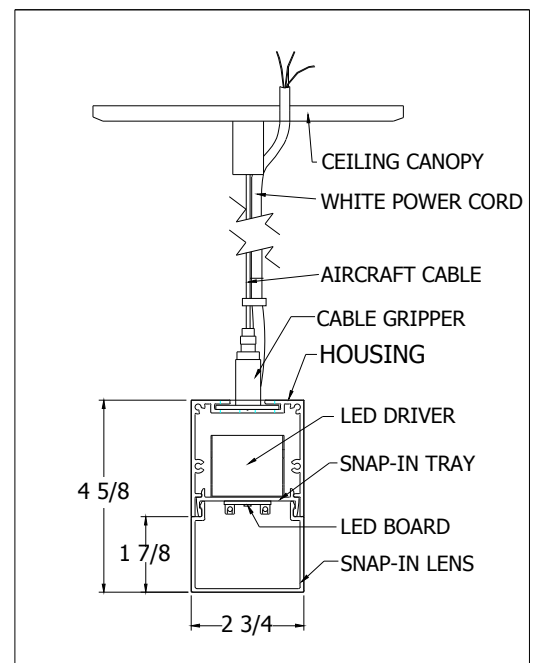
DIA. A Power Feed



DIA. B Non-Power Feed



See Sheets 2 and 3 for Step-By-Step Installation Details



Service Hotline: 1-201-246-8188
Monday through Friday 9:00AM - 5:00PM

INSTALLATION PROCEDURE (Sheet 2 of 4)

Feed Suspension Assemblies @ Ceiling

POWER OFF

Dia. A

<p>1</p> <p>Install 1/4-20 Crossbar Stud Into Crossbar</p>	<p>2</p> <p>Install Crossbar into J-Box with (2) Crossbar Screws</p>	<p>3</p> <p>Thread Stainless Steel Cable Through 1/4-20 Knurled Coupling</p>
<p>4</p> <p>Position Canopy Over J-Box With Crossbar Stud And Wire Passing Through Hole In Canopy.</p>	<p>5</p> <p>Thread Knurled Coupling On To Crossbar Stud Until Canopy Is Flush With Ceiling. Power Cord is factory-installed. Connection is made when fixture is completely suspended. (See Sheet 3 of 4)</p>	<p>Power Cord @ Fixture (5) or (6) wire</p>

Non-Feed Suspension Assemblies @ Ceiling

Dia. B

<p>1</p> <p>Install 1/4-20 Crossbar Stud Into Crossbar</p>	<p>2</p> <p>Install Crossbar into J-Box with (2) Crossbar Screws</p>	<p>3</p> <p>Thread Stainless Steel Cable Through 1/4-20 Knurled Coupling</p>
<p>4</p> <p>Position Canopy Over J-Box With Crossbar Stud Passing Through Hole In Canopy.</p>	<p>5</p> <p>To Complete Non-Feed Suspension: Thread Knurled Coupling On To Crossbar Stud Until Canopy Is Flush With Ceiling.</p>	<p>Fixtures must be installed by licensed electricians in accordance with all local and national codes.</p> <p>Service Hotline: 1-201-246-8188 Monday through Friday 9:00AM - 5:00PM</p>

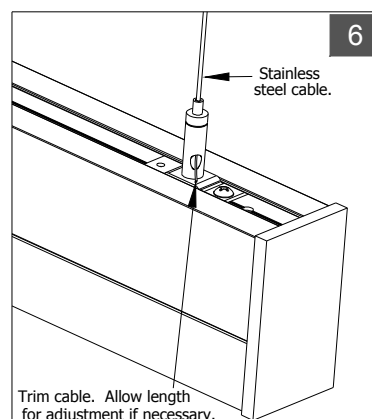
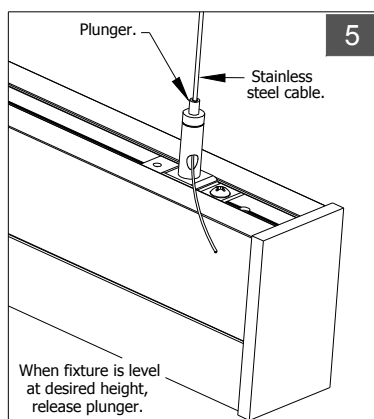
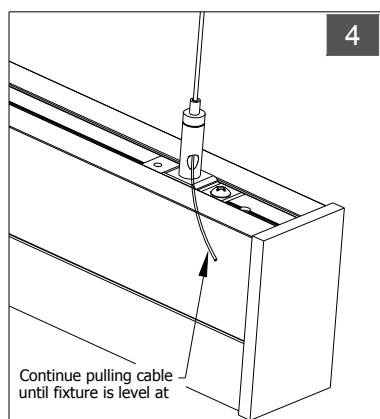
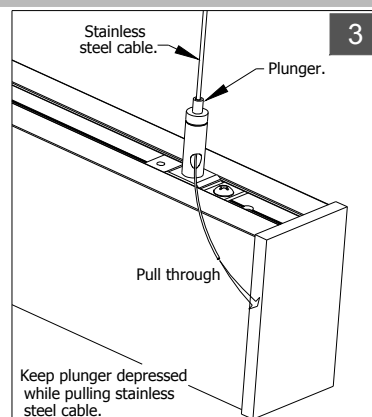
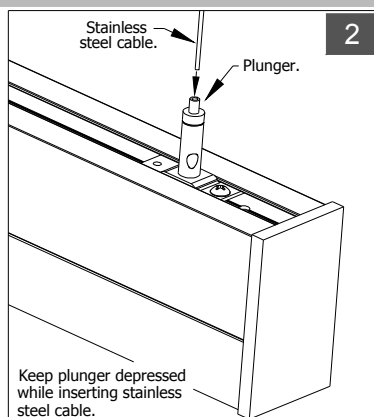
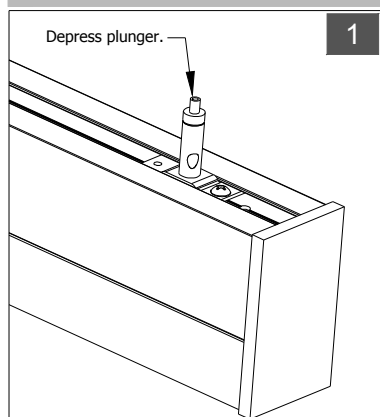


INSTALLATION PROCEDURE (Sheet 3 of 4)

Feed Suspension Assemblies @ Fixture

POWER OFF

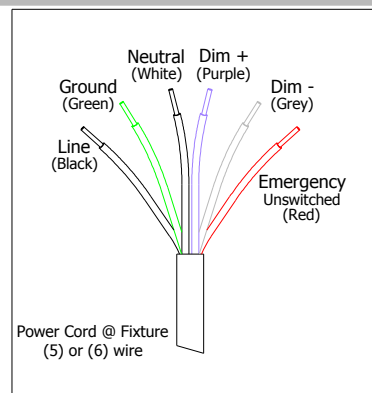
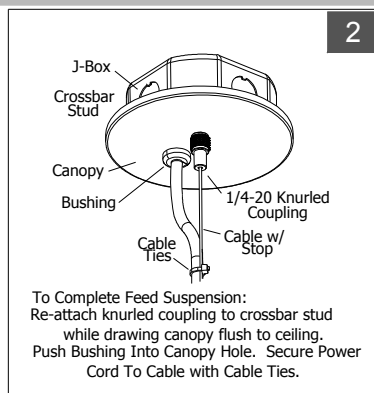
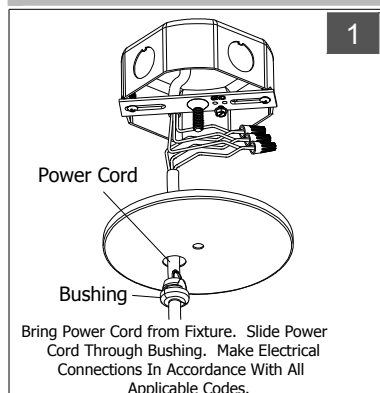
Dia. A and B



Completing Feed @ J-Box

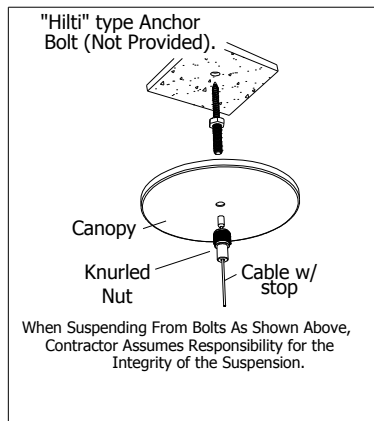
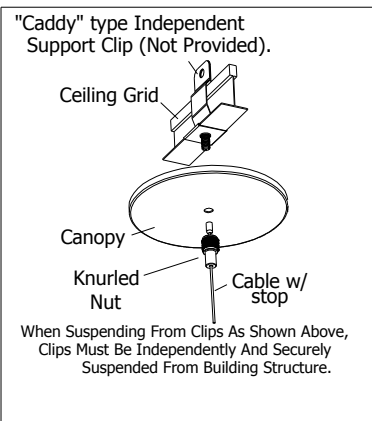
POWER OFF

Dia. A



Optional Non-Feed Suspension Methods

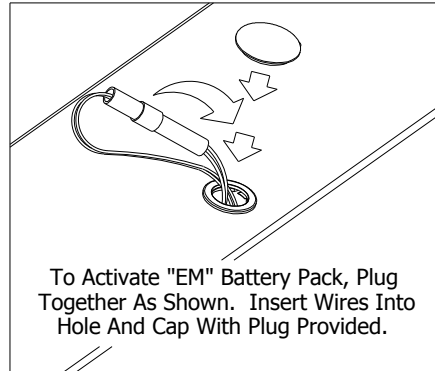
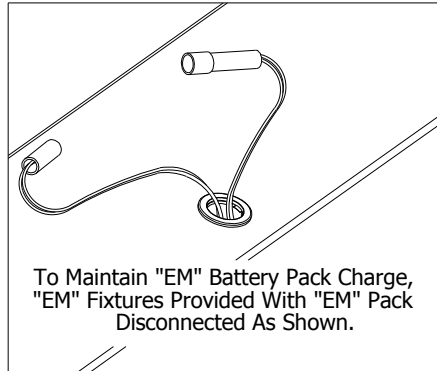
POWER OFF



Fixtures must be installed by licensed electricians in accordance with all local and national codes.

**Service Hotline: 1-201-246-8188
Monday through Friday 9:00AM - 5:00PM**

INSTALLATION PROCEDURE (Sheet 4 of 4)

"EM" Battery Pack Activation**POWER OFF**

Installation and maintenance of the EMILY luminaire may only be performed by qualified and licensed electricians in accordance with all applicable codes and standards.

Picasso Lighting Industries, LLC assumes no responsibility or liability for any unauthorized changes or modifications to the EMILY luminaire.

The EMILY luminaire is not intended for outdoor use.

Picasso Lighting Industries, LLC. shall assume no responsibility or liability for the integrity of the mounting surface and structure as well as the integrity of all components not provided by Picasso Lighting Industries, LLC.

Turn off line voltage and allow luminaire to completely cool before performing any maintenance including routine cleaning of luminaire.

Avoid touching LED light emitting surfaces while installing, replacing or providing maintenance to the luminaire.

Luminous flux and connected electrical load are subject to an initial tolerance of +/- 10%.

Color temperature (k) is subject to a tolerance of +/- 150k from the nominal value.

Any component contained in this luminaire can only be replaced by the manufacturer or an agent thereof.

Keep these INSTALLATION INSTRUCTIONS in a secure and readily accessible place for any future maintenance or for reference.

Service Hotline: 1-201-246-8188
Monday through Friday 9:00AM -
5:00PM

DO NOT DISCARD
PLEASE READ CAREFULLY BEFORE BEGINNING INSTALLATION.