



PICASSO LIGHTING INDUSTRIES, LLC
46 Sellers Street, Kearny, NJ 07032
201.246.8188

Indoor Distribution Test Report

Picasso Lighting Industries, LLC

46 Sellers St.
Kearny, NJ 07032

Photopia Photometric Analysis & Optical Design

Catalog Number

MX2-RF-4-D5-30-80-FW-W

(White Housing – Recessed - Direct – Frosted White Lens)

Test Number

IES-P00061

Test Date

2017-06-21

The results contained in this report pertain only to the tested sample.
This report shall not be reproduced, except in full, without written approval of Picasso Lighting Industries, LLC.

Luminaire Description:	Extruded Aluminum Housing, Direct, Frosted White Flush Lens
Lamp:	LED (3000K, 80+ CRI)
Installation:	Recessed
Luminous Length:	47.75 in
Luminous Width:	2.31 in
Luminous Height:	0.00 in

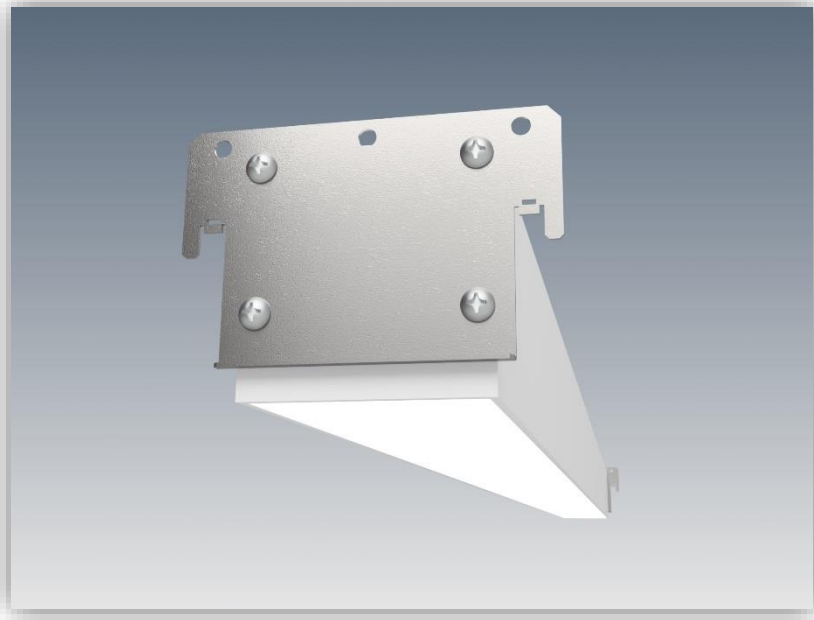


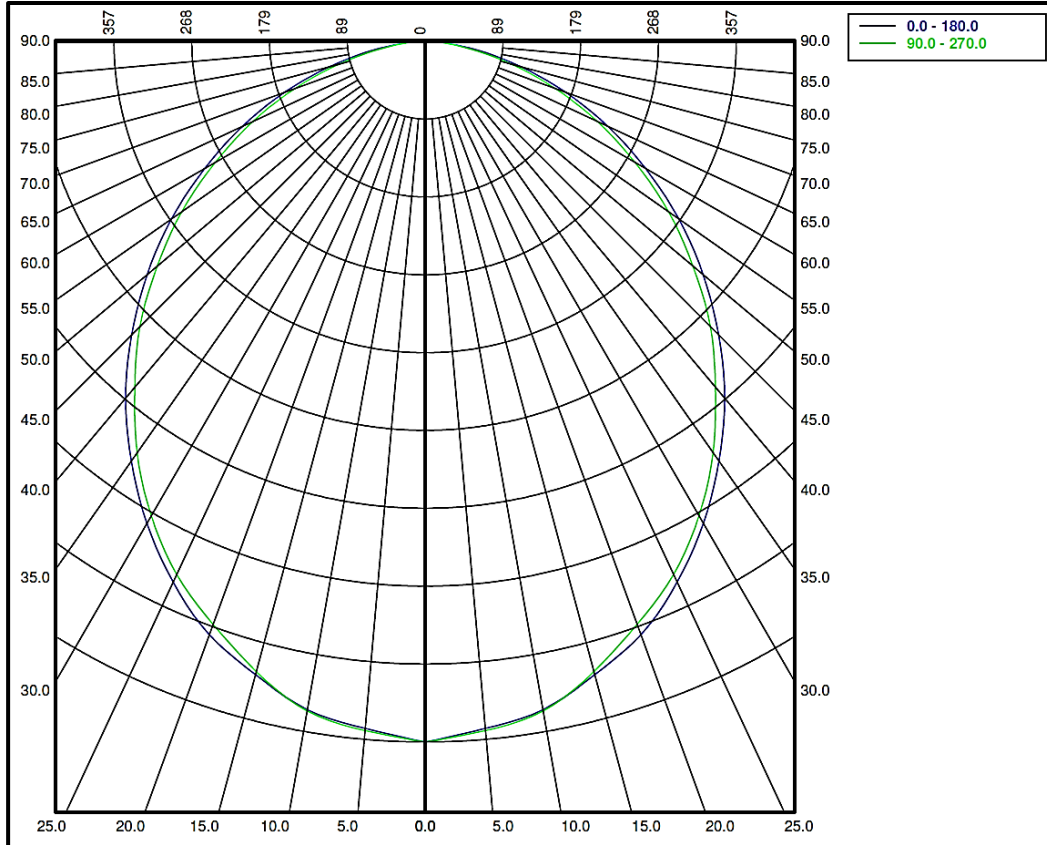
Image may differ slightly from actual unit

Summary of Results

System Power:	25.1W
Total Luminaire Output:	2004 Lumens
Luminaire Efficacy:	80 lm/W
Max Candela:	804.23 Candela

Calculated results may not be representative of field performance
Ballast factors have not been applied

Polar Plot



Zonal Lumen Summary

Zone	Lumens	% Fixture	Zone	Lumens	% Fixture
0-10	75.29	3.8%	90-100	0	0.0%
10-20	211.67	10.6%	100-110	0	0.0%
20-30	313.07	15.6%	110-120	0	0.0%
30-40	364.17	18.2%	120-130	0	0.0%
40-50	361.47	18.0%	130-140	0	0.0%
50-60	311.53	15.5%	140-150	0	0.0%
60-70	223.77	11.2%	150-160	0	0.0%
70-80	116.36	5.8%	160-170	0	0.0%
80-90	26.67	1.3%	170-180	0	0.0%
0-90	2004	100.0%	0-180	2004	100.0%

Candela Distribution

Horizontal Angle (Degrees)

	0	22.5	45	67.5	90	112.5	135	157.5	180	202.5	225	247.5	270	292.5	315	337.5
0	804	804	804	804	804	804	804	804	804	804	804	804	804	804	804	804
5	792	798	797	787	794	787	797	798	792	798	797	787	794	787	797	798
10	779	776	776	775	781	775	776	776	779	776	776	775	781	775	776	776
15	753	753	751	748	749	748	751	753	753	753	751	748	749	748	751	753
20	725	721	718	717	712	717	718	721	725	721	718	717	712	717	718	721
25	685	684	680	676	675	676	680	684	685	684	680	676	675	676	680	684
30	639	640	635	631	629	631	635	640	639	640	635	631	629	631	635	640
35	588	586	582	579	577	579	582	586	588	586	582	579	577	579	582	586
40	535	531	525	522	519	522	525	531	535	531	525	522	519	522	525	531
45	477	474	467	463	464	463	467	474	477	474	467	463	464	463	467	474
50	417	413	410	403	402	403	410	413	417	413	410	403	402	403	410	413
55	356	353	349	344	342	344	349	353	356	353	349	344	342	344	349	353
60	292	292	287	282	279	282	287	292	292	292	287	282	279	282	287	292
65	232	231	226	222	219	222	226	231	232	231	226	222	219	222	226	231
70	171	170	166	161	159	161	166	170	171	170	166	161	159	161	166	170
75	114	113	110	105	103	105	110	113	114	113	110	105	103	105	110	113
80	62	61	58	54	52	54	58	61	62	61	58	54	52	54	58	61
85	22	21	18	16	16	16	18	21	22	21	18	16	16	16	18	21
90	4	4	3	3	3	3	3	4	4	4	3	3	3	3	3	4

Average Luminance (cd/m²)

Horizontal Angle (Degrees)

ANGLES	0-Deg	45-Deg	90-Deg
0	11242	11242	11242
45	9415	9227	9156
55	8660	8507	8317
65	7655	7480	7226
75	6137	5909	5535
85	3450	2961	2522

Coefficients of Utilization – Zonal Cavity Method

Effective Floor Cavity Reflectance 20%																		
RC	80				70				50			30			10			0
RW	70	50	30	10	70	50	30	10	50	30	10	50	30	10	50	30	10	0
RCR	Values are in Lumens delivered to the Task Plane																	
0	2385	2385	2385	2385	2325	2325	2325	2325	2224	2224	2224	2124	2124	2124	2044	2044	2044	2004
1	2184	2104	2024	1944	2144	2044	1984	1904	1964	1904	1844	1884	1844	1804	1824	1784	1743	1703
2	2004	1844	1703	1603	1944	1804	1683	1583	1723	1623	1543	1663	1583	1503	1603	1543	1483	1423
3	1824	1623	1463	1343	1784	1583	1443	1323	1523	1403	1303	1483	1363	1283	1423	1343	1263	1222
4	1683	1443	1263	1142	1623	1423	1263	1142	1363	1222	1122	1323	1202	1102	1283	1182	1082	1042
5	1543	1303	1122	982	1503	1263	1102	982	1222	1082	962	1182	1062	962	1162	1042	942	902
6	1423	1162	1002	862	1383	1142	982	862	1122	962	862	1082	942	842	1042	922	842	802
7	1323	1062	882	762	1283	1042	882	762	1022	862	762	982	862	762	962	842	741	701
8	1242	962	802	681	1202	962	802	681	922	782	681	902	782	681	882	762	681	641
9	1162	902	721	621	1122	882	721	621	862	721	621	842	701	621	822	701	601	581
10	1082	822	661	561	1062	822	661	561	802	661	561	782	641	561	762	641	561	521

