

MX2.5-RF-FLANGE (TRIM) Installation



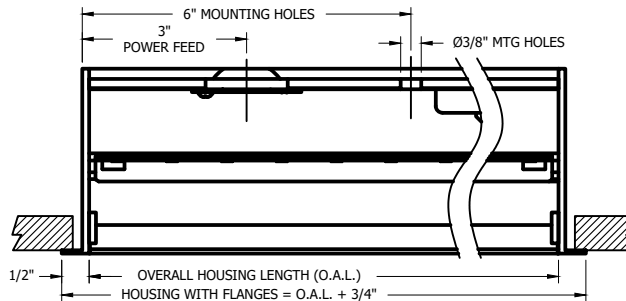
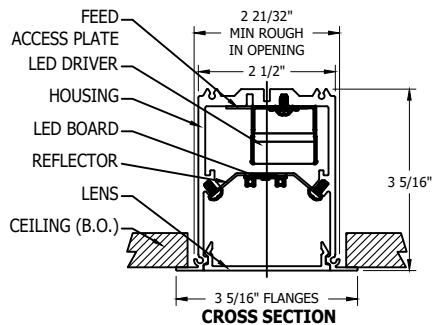
Installation PROCEDURE

DO NOT DISCARD

PLEASE READ CAREFULLY BEFORE BEGINNING Installation.

Fixtures must be installed by licensed electricians in accordance with all local and national codes.

To prevent electrical shock, disconnect electrical supply before installing or servicing.



Tools Required
(Not Provided)



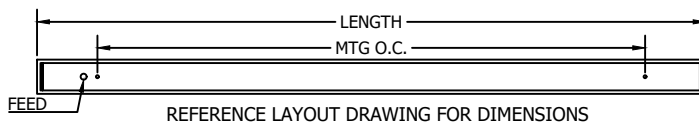
Screwdriver



SD Gloves



Wire Cutters



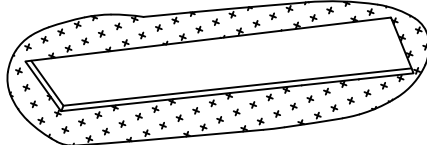
REFERENCE LAYOUT DRAWING FOR DIMENSIONS

Installation:

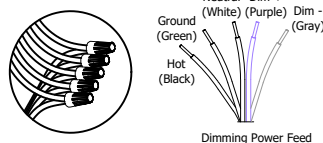
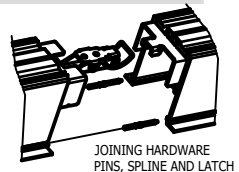
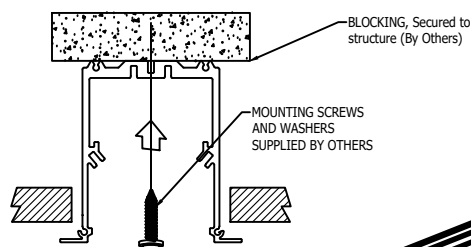
POWER OFF

MIN. CEILING CUTOUT:

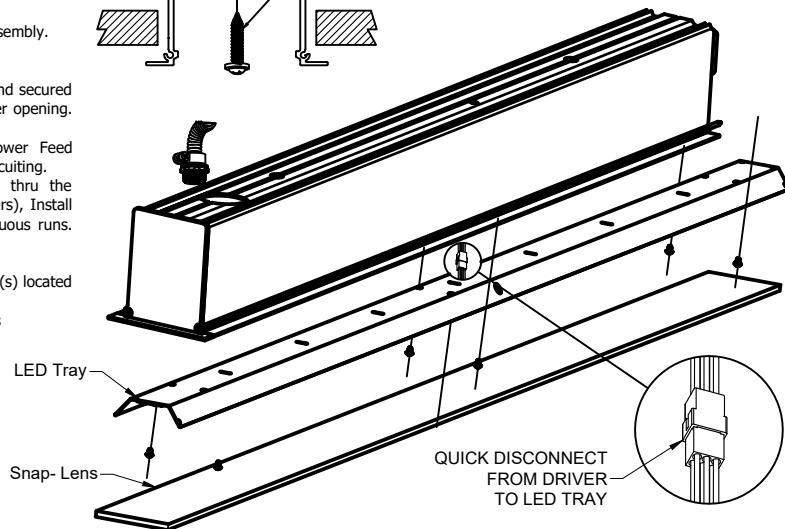
2 21/32" WIDE x HOUSING LENGTH - 5/8"



1. Remove lens and LED TRAY Assembly Disconnect wiring Assembly. Store in a safe place for re-installation. Save Hardware for re-Installation of components.
2. Fixture is intended to be installed thru opening in ceiling and secured to Blocking (By Others). Fixture Flange is intended to cover opening. Cut ceiling opening to minimum dimension required.
3. Locate Power Feed KO in top of housing, Secure Power Feed connectors to Housing along with Proper Conductors for Circuiting.
4. Install Upper Housing Assembly to Reinforced Blocking thru the ceiling opening, using 1/4-20 Hardware (Supplied By others), Install fixture tight to ceiling surface. Can be installed in Continuous runs. (See joining detail.)
5. Make Power Feed Connections.
6. Connect Quick-Disconnect wiring assembly from LED Driver(s) located in Upper Housing to LED Tray(s)
7. Re-Install LED TRAY to Upper Housing with Supplied screws
8. Re-Install Lens into Upper Housing.



Wire Splicing. (Wire Nuts (B.O.))



QUICK DISCONNECT
FROM DRIVER
TO LED TRAY

Installation:

POWER ON

Keep these Installation INSTRUCTIONS in a secure and readily accessible place for any future maintenance or for reference.

DO NOT DISCARD

PLEASE READ CAREFULLY BEFORE BEGINNING Installation.

Service Hotline: (201) 246-8188
Monday through Friday 9:00AM - 5:00PM