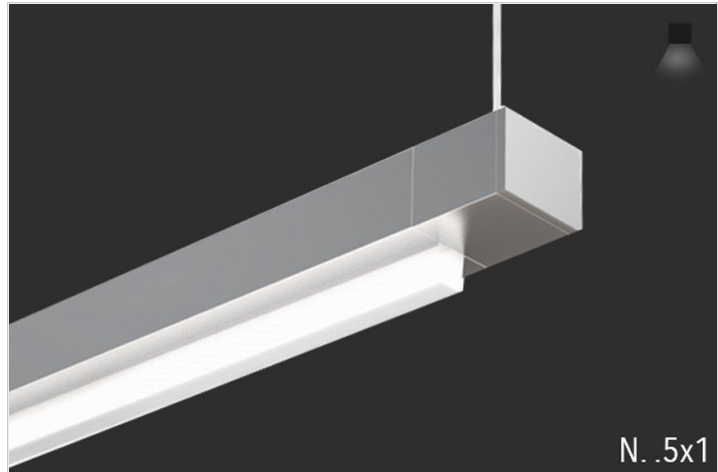


## Overview

- Gleam pendant was designed for architects, by architects. Its sleek design and performance is perfect for lighting areas that require sleek architectural elements.
- Take a look below and enjoy a plethora of standard and special finishes. Woodgrain, anodized, plated mirror silver and brass, custom RAL as well.
- Canopies accessorize Gleam in a round, square and rectangular shape. Custom canopies are available as well.
- The Gleam is so small in profile, we need to remotely locate all the drivers.
- Drivers are offered in various remote installation types and fixture provides direct, indirect and direct/indirect lighting. Power is supplied through cables and we can also tune in our drivers to specific lumen output if required.
- All Picasso Lighting fixtures are UL approved and made in the USA.
- High efficacy up to 350LPF
- Small Profile with nominal lengths from 2' to 8'
- Optimized wide angle distribution for indirect uplight
- Choice of CCT, 80+ or 90+ CRI, and tunable white (2700K-4000K)
- Damp location rated
- 5 Year, 50,000 Hour Warranty



# Gleam-PD

PENDANT SMALL (REMOTE DRIVERS)

TYPE  
PROJECT

## Ordering Format

PART NUMBER: GLE-PD

Size	Lumens Direct	CCT Available	CRI Available	Direct Optics
2 = 2 Feet	D1 = 150 LPF	27 = 2700 Kelvins	80 = 80 CRI	SAO.5 = Satin Acrylic Optic Lens .5 inch
4 = 4 Feet	D2 = 250 LPF	30 = 3000 Kelvins	90 = 90 CRI	SAO3 = Satin Acrylic Optic Lens 3 inches
6 = 6 Feet	D3 = 350 LPF	35 = 3500 Kelvins		SAO6 = Satin Acrylic Optic Lens 6 inches
8 = 8 Feet		40 = 4000 Kelvins		
Mounting	Driver / Voltage	Fixture Finish	Canopy/Power Cord Color	Options
<b>LV1CR</b> = Small Custom Rectangular Canopy / Driver Remote/Power Low Voltage <b>LV1R</b> = Round 5in Canopy JBox - Driver Remote/Power Low Voltage <b>LV1S</b> = Square 5in Canopy JBox - Driver Remote/Power Low Voltage <b>LVRR</b> = Driver Remote Round 5in Canopy JBox - 2in Support 1/4 Rod <b>LVRS</b> = Driver Remote Square 5in Canopy JBox - 2in Support 1/4 Rod <b>LVD1R</b> = Driver Remote Round 5in Canopy JBox - 2in Support Slot Grid <b>LVD1S</b> = Driver Remote Square 5in Canopy JBox - 2in Support Slot Grid <b>LVD2R</b> = Driver Remote Round 5in Canopy JBox - 2in Support T Grid <b>LVD2S</b> = Driver Remote Square 5in Canopy JBox - 2in Support T Grid <b>LVUR</b> = Driver Remote Round 5in Canopy JBox - .5in Support Unistrut <b>LVUS</b> = Driver Remote Square 5in Canopy JBox - .5in Support Unistrut <b>RLVIDF</b> = Recessed Housing w/ Integral Drivers /Power Low Voltage/Trim <b>RLVIDSF</b> = Recessed Housing w/ Integral Drivers /Power Low Voltage/Trimless <b>SLVID</b> = Surface	<b>RND 1</b> = Remote Non-Dim Universal 120VAC <b>RZT 1</b> = Remote 0-10v dimming 120v dual 1% <b>RZT 2</b> = Remote 0-10v dimming 277v dual 1% <b>RLE1</b> = Remote Lutron EcoSystem 1% DLC EE CCR / PWM SoftOnFadeToBlack <b>RCC</b> = Remote Custom Control - add in notes	<b>W</b> = Standard White <b>BK</b> = Standard Black <b>SVR</b> = Standard Silver <b>RAL</b> = Enter RAL # in notes section <b>PA</b> = Enter RAL # in notes section <b>CW</b> = Custom Wood Finish - see wood PN # enter in notes. <b>AA</b> = Anodized Aluminum -enter PN in notes section	<b>PC</b> = Powered by Cable	<b>AWN</b> = Lutron Athena Wireless Node (RF only) <b>AWNS</b> = Lutron Athena Wireless Node (with Sensor) <b>REMD</b> = Remote Emergency Driver - Battery Backup 120-277VAC

# Gleam-PD

PENDANT SMALL (REMOTE DRIVERS)

TYPE

PROJECT

Housing w/ Integral Drivers /Power Low Voltage				
--	--	--	--	--

NOTES

ORDER NUMBER:

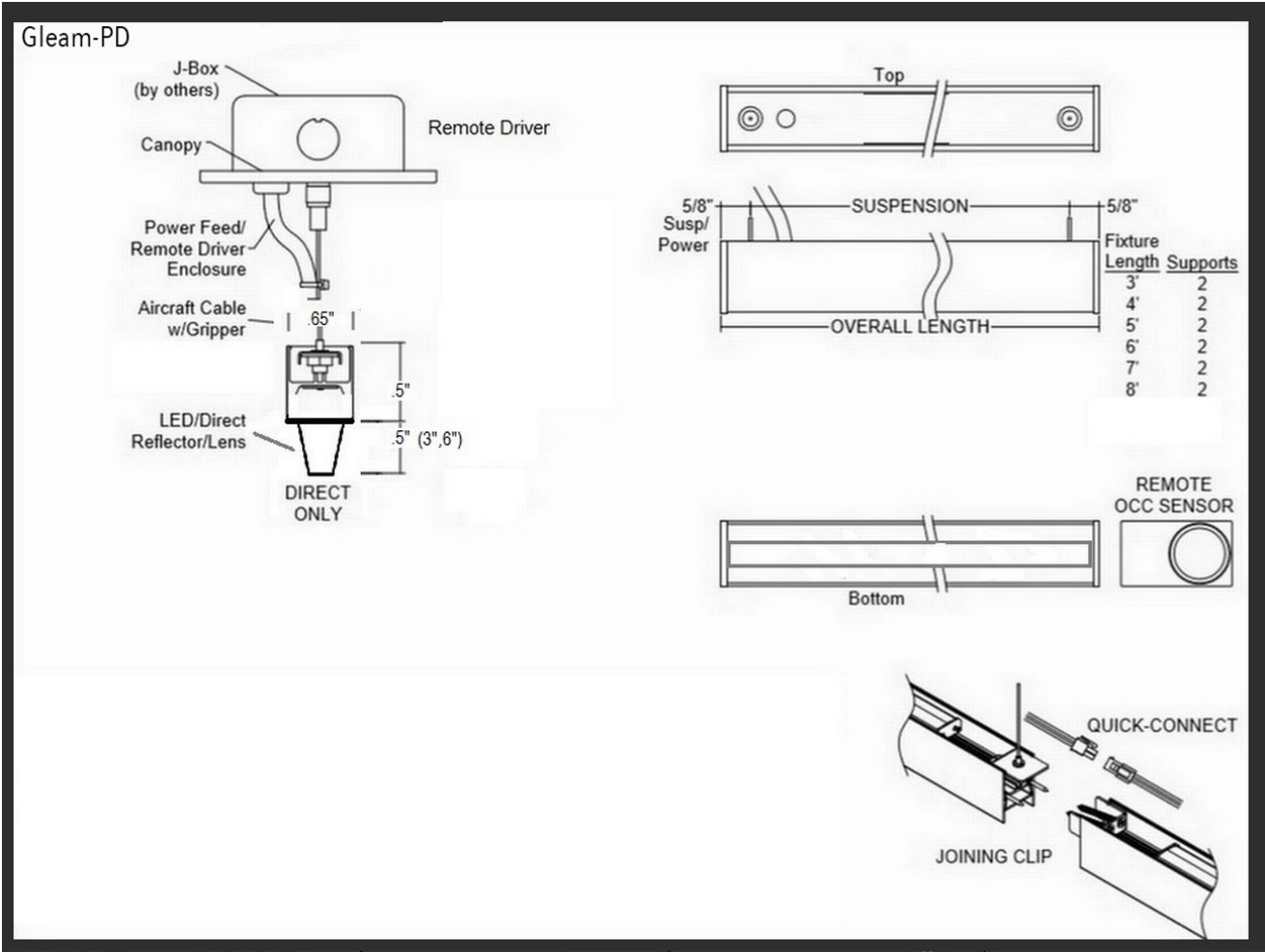
Construction & Mounting

**HOUSING**  
Extruded aluminum housings are supplied in nominal lengths of 2 ft- 8 ft. Fixtures may be continuously rowed (contact factory for details). Easy access to remote driver and LED boards. End caps are extruded aluminum.

**REFLECTOR**  
Integral powder-coated LED housing with excessive reflectivity for increased lumen output

**OPTICS**  
Extruded satin acrylic TIR optic provides excellent diffusion, high transmission, and no LED imaging.

**MOUNTING**  
Cable mounting supports and powers Gleam because it's too small to fit a driver. Various size canopies and different power supplies are available. The cable uses gripper-style locking for field adjustments and is connected to the driver or wire power supplied. Canopy mounts to standard J-box and the standard cable lengths are 4 feet.



# Gleam-PD

PENDANT SMALL (REMOTE DRIVERS)

TYPE

PROJECT

LV1R  
LV1S  
J-BOX W/Remote Drivers

LVRR  
LVRS  
1/4" ROD W/Remote Drivers

LVD1R  
LVD2R  
LVD1S  
LVD2S  
GRID W/Remote Drivers

LVUR  
LVUS  
UNISTRUT W/Remote Drivers

RLVID  
SLVID

LV1CR

### Standard Finishes

White W      Black BK      Silver SVR

### Anodized Aluminum

xxxx-B for Aluminum to be Brushed

Anodized Black AABK    Anodized DK. Bronze AADB    Anodized LT. Bronze AALB    Anodized Champagne AALC    Anodized Clear AACL

### Plated Aluminum

Antique Brass APAB    Aged Bronze APBZ    Polished Chrome APPC    Polished Gold APPG

### Wood Finishes

Light Bamboo LW01    Light Pine LW02

Teak LW03    Dark Bamboo LW04    Dark Cherry LW05    Brushed Chestnut LW06

Chestnut DW01    Dark Chestnut DW02    Cherry DW03    Dark Mahogany DW04

Mahogany DW05    Walnut Pine DW06    Dark Walnut Oak DW07    Consult Factory

**Custom RAL** - Custom finishes go to: [tiger-coatings.com](http://tiger-coatings.com) Add # in Notes

Standard Finishes – colors are powder coated and do not add to delivery lead time.

Anodized Aluminum – can be smooth or brushed, color can vary fixture to fixture and adds 2-3 weeks to lead time. Anodized finish is limited in fixture size.

Plated Aluminum – is a mirror finish in chrome and gold and adds 2 weeks to lead time.

Wood Finishes – so realistic, wood finish can add up to 3-4 weeks to lead time.

## Electrical / Driver

- Drivers - Our drivers are specifically selected based on fixture application to ensure ultimate reliability and long life. We use only UL recognized brands of LED drivers. Our LED drivers feature HPF (high power factor), universal voltage 110 - 277 VAC and include 0-10V dimming. Please note, 277v has longer distances from power feed to power feed then 120v.
- Rated life (90% survivorship) of 50,000 hours at 50° C max. ambient (and 70° C max. case) temperature. At maximum driver load: Efficiency >84%, PF>0.9, THD
- Emergency drivers are factory installed as an option, long life, high temperature, recyclable Ni-Cad battery pack with test switch and charge indicator. EMR is minimum of 90 minutes operation to meet code.
- If required we can supply premium drivers such as Lutron, Eldoed and others upon request. Advanced control systems compliant drivers such as POE,DALI, DMX, etc. are also available, please consult factory.
- Our LED drivers feature HPF (high power factor), universal voltage 110 - 277 VAC and include 0-10V dimming.
- POE - We are working with Molex/Igor POE systems. We can add a POE driver into our fixtures or remote them. Based on the fixture you select, we will notify you (or you can contact the factory) to see if we can install the P-driver or the P-driver needs to be remote. Just add POE1 in the spec and we will advise. Please keep in mind you need to specify a complete POE control system before specifying POE1.

## LED Performance

LED Output	CCT Color Temp	Watts	Lumens	Lumens per Watt	CCT Multiplier
Lowest	3000	7.6WPF	150LPF	22	1
Low	3000	14.3WPF	250LPF	21	1
Medium	3000	20.5	350LPF	21	1

- The table above is a quick reference. When calculating loads make sure you add direct and indirect LPW to get total wattage. Please refer to photometric report for detailed information.
- Our light engines are precisely designed for optimal operation of LED assemblies.
- Our standard LED's CCT (correlated color temperature) range is 2700K to 4000K. Other CCT values are available upon request.
- We log LED bin codes for each project we supply to ensure color consistency and keep a record of those projects for future reference.
- CRI offered is 80+, and 90+ Note: on 90+ CRI use .85 multiplier
- Tunable white, warm dim and other special LED colors available.
- Custom Lumens Available
- We design our own printed circuit boards to ensure high luminescence efficiency, low thermal resistance and long-term reliable operation.
- Light engines are easily replaced.
- We use only recognized brand LED's with 3 SDCM (standard deviation color matching) with high color consistency. 2 SDCM available upon request.
- If you require a special LED manufacturer, please contact us. LED chip manufacturers used by Picasso are primarily (but not limited to) Nichia, Cree and Samsung.
- LRP - "LED Reel Program" – LED's for printed circuit boards come on reels' like old 8mm projectors and they're sold in lots just like fabric. At Picasso Lighting, we have a program where we make sure all of your reels come from the same lot for each project. This ensures excellent color consistency in large open spaces.
- LED life is rated at 50,000 hours

## Certifications & Warranties

- 1
- 3
- 5
- 7
- 2
- 4
- 6
- 8



Note: Picasso lighting industries, LLC reserves the right to make any design changes which will not affect the overall appearance or performance of the product. All ceilings to be adequately reinforced by others. All fixtures to be wired by licensed electrician only. The information contained herein is the sole property of Picasso Lighting Industries, LLC and may not be used without prior written consent of Picasso Lighting Industries, LLC. The 'USGBC member logo' is a trademark owned by the U.S. Green building council and is used by permission. The logo signifies only that Picasso Lighting Industries, LLC is a USGBC member; USGBC does not review, certify, or endorse the products or services offered by its members.