

Edge Light Guide Lens

PENDANT SMALL (REMOTE DRIVERS)

TYPE

PROJECT

Overview

- Edge /ej/ the outside limit of an object, area, or surface; a place or part farthest away from the center of something.
- Edge Series trapezoid profile pendant is sleek in design and performance and is perfect for lighting areas that require architectural elements.
- DESIGNER SELECTIONS
- Edge Series has 1 profile size, nominally: four inches in width and one half of an inch in height.
- Edge Series has a multitude of lens options, up and down on pendants and down on surface. Batwing, Lambertian and asymmetrical with tilts.
- Edge Series has multiple choices for canopies and colors, just scroll down for your choices.
- Edge Series is available in almost any CCT available in the market, we've selected the most popular, but don't let that stop you from asking for something different.
- Edge Series a wide selection of remote drivers IE; remote, surface, and recessed. We can also tune in our drivers to a specific lumen output if required.
- Edge Series is always available for your project's special customization needs, please contact your agent.
- Edge Series qualifies as "Made in America", "American Made" and is part of our ECO sustainable end of life program.
- For all: ies files, pictures, instructions, rfa files, and warranties...scroll to bottom.



Edge Light Guide Lens

PENDANT SMALL (REMOTE DRIVERS)

TYPE

PROJECT

Ordering Format

PART NUMBER: EGL-PF

Size	Lumens Direct	Lumens Indirect	CCT Available	CRI Available
2 = 2 Feet	D3 = 350 LPF	I3 = 350 LPF	27 = 2700 Kelvins	80 = 80-85 CRI
4 = 4 Feet	D5 = 500 LPF	I5 = 500 LPF	30 = 3000 Kelvins	90 = 90-95 CRI
6 = 6 Feet	D7 = 750 LPF	I7 = 750 LPF	35 = 3500 Kelvins	
8 = 8 Feet	D10 = 1000 LPF	I10 = 1000 LPF	40 = 4000 Kelvins	
CL = Custom Length, add in notes		NN = Not Needed	TW = Tunable White 2700-5000 Kelvins	
Direct Optics	Indirect Optics	Mounting	Driver / Voltage	Fixture Finish
DLW = Lambertian White Lens DBW65 = Batwing 65 Degree DA5025 = Asymmetric 50 Degree @25 Degree Angle	ILW = Lambertian White Lens IBW120 = Batwing 120 Degree IF150 = Flat 150 Degree IA6040 = Asymmetric 60 Degree @40 Degree Angle IA4560 = Asymmetric 45 Degree @60 Degree Angle	LV1CR = Small Custom Rectangular Canopy / Driver Remote/Power Low Voltage LV1R = Round 5in Canopy JBox - Driver Remote/Power Low Voltage LV1S = Square 5in Canopy JBox - Driver Remote/Power Low Voltage LVRR = Driver Remote Round 5in Canopy JBox - 2in Support 1/4 Rod LVRS = Driver Remote Square 5in Canopy JBox - 2in Support 1/4 Rod LVD1R = Driver Remote Round 5in Canopy JBox - 2in Support Slot Grid LVD1S = Driver Remote Square 5in Canopy JBox - 2in Support Slot Grid LVD2R = Driver Remote Round 5in Canopy JBox - 2in Support T Grid LVD2S = Driver Remote Square 5in Canopy JBox - 2in Support T Grid LVUR = Driver Remote Round 5in Canopy JBox - .5in Support Unistrut LVUS = Driver Remote Square 5in Canopy JBox - .5in Support Unistrut RLVIDF = Recessed Housing w/ Integral Drivers /Power Low Voltage/Trim RLVIDS = Recessed Housing w/ Integral Drivers /Power Low Voltage/Trimless	RND 1 = Remote Non-Dim Universal 120VAC RND 2 = Remote Non-Dim Universal 277VAC RZT 1 = Remote 0-10v dimming 120v dual 1% RZT 2 = Remote 0-10v dimming 277v dual 1% RLE1 = Remote Lutron EcoSystem 1% DLC EE CCR / PWM SoftOnFadeToBlack RCC = Remote Custom Control - add in notes	W = Standard White BK = Standard Black SVR = Standard Silver RAL = Enter RAL # in notes section PA = Plated Aluminum-enter plated finish in notes CW = Standard Wood Finish - see wood PN # enter in notes. SW = Special pattern submitted by designer AA = Anodized Aluminum -enter PN in notes section

Edge Light Guide Lens

PENDANT SMALL (REMOTE DRIVERS)

TYPE
PROJECT

		SLVIDT-C = Surface Housing w/ Integral Drivers /Power Low Voltage/Top KO Power SLVIDS-C = Surface Housing w/ Integral Drivers /Power Low Voltage/Side KO Power SLVIDT = Surface Housing w/ Integral Drivers /Power Low Voltage/Top KO Power/Support and Power on Box SLVIDS = Surface Housing w/ Integral Drivers /Power Low Voltage/Side KO Power/Support and Power on Box		
--	--	--	--	--

Canopy/Power Cord Color	Options
PC = Powered by Cable	AWN = Lutron Athena Wireless Node (RF only)
CWPW = Small 18/2 Canopy White/Power Cord White	AWNS = Lutron Athena Wireless Node (with Sensor)
CWPB = Small 18/2 Canopy White/Power Cord Black	CA = Custom Angle, add in notes
CBPB = Small 18/2 Canopy Black/Power Cord Black	OS = Occupancy Sensor
CBPW = Small 18/2 Canopy Black/Power Cord White	REMD = Remote Emergency Driver - Battery Backup 120-277VAC
	2C = 2 Circuits

NOTES

ORDER NUMBER:

Edge Light Guide Lens

PENDANT SMALL (REMOTE DRIVERS)

TYPE

PROJECT

Construction & Mounting

HOUSING
Extruded aluminum housings are supplied in nominal lengths of 2 ft- 8 ft. Fixtures may be continuously rowed (contact factory for details). Easy access to remote driver and LED boards. End caps are extruded aluminum.

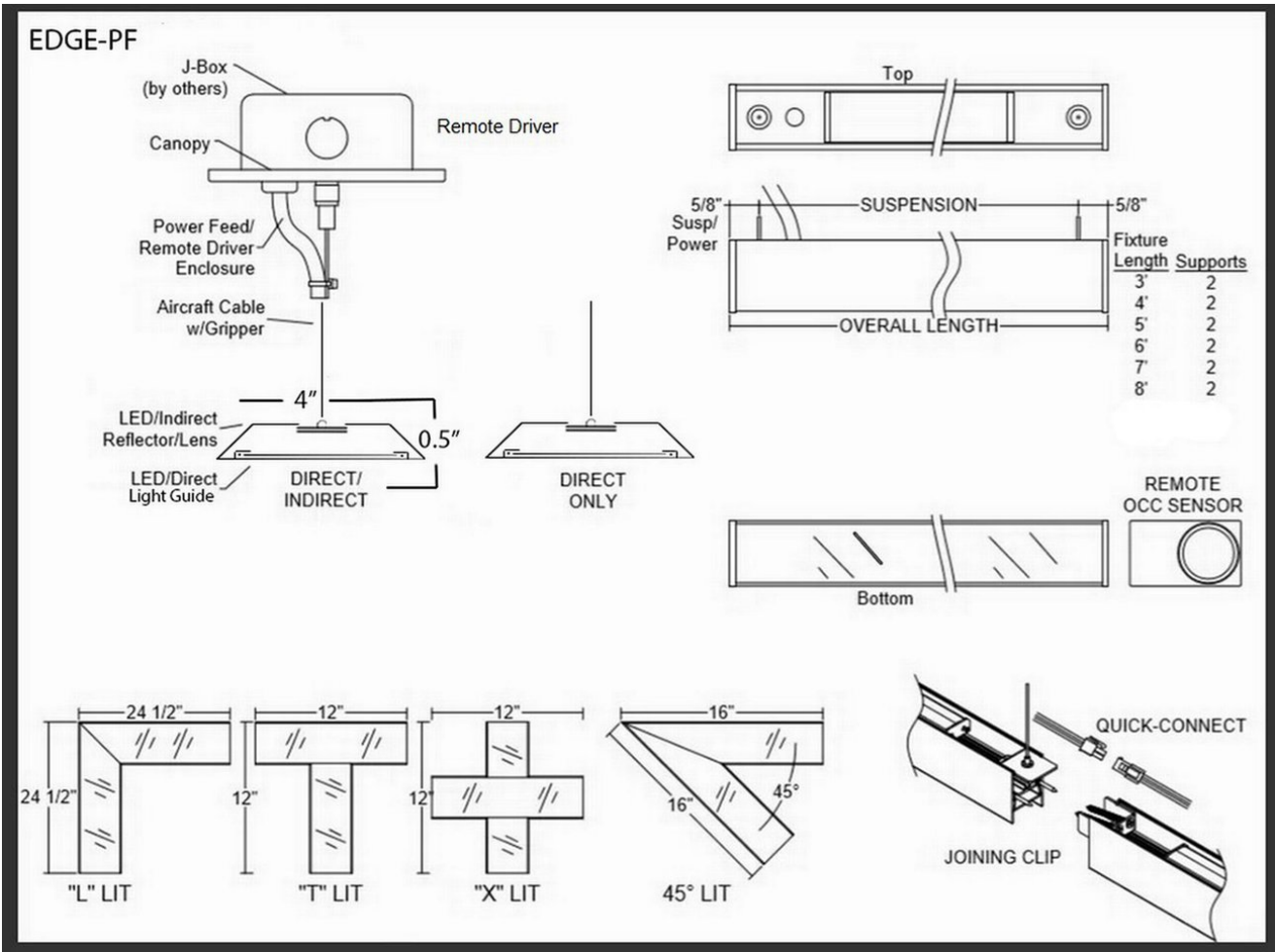
REFLECTOR
Integral SmartOptics® reflector inside LED housing with excessive reflectivity for increased lumen output.

FINISH
Standard powder-coated colors are white,black and silver. Custom processed wood finishes, aluminum anodized finishes, chrome/gold plating and custom finishes are available as well. We also accept RAL and Pantone numbers for powder-coating color choices.

OPTICS
Downlight SmartOptics® inside consists of a three-layer light guide that provides even illumination. Uplight is a Cosine 150-degree batwing element providing a more flat even light distribution.

MOUNTING
Cable mounting supports or 2 wire feed, powers the Edge because it's too small to fit a driver. Various size canopies and different power supplies are available. The cable uses gripper-style locking for field adjustments and is connected to the driver. Canopy mounts to standard J-box and the standard cable lengths are 4 feet.

LABELING
UL Approved IBEW Union Made



Edge Light Guide Lens

PENDANT SMALL (REMOTE DRIVERS)

TYPE

PROJECT

LV1R
LV1S
J-BOX W/Remote Drivers

LVRR
LVRS
1/4\" ROD W/Remote Drivers

LVD1R
LVD2R
LVD1S
LVD2S
GRID W/Remote Drivers

LVUR
LVUS
UNISTRUT W/Remote Drivers

Trimless
RLVIDS
Trim
RLVIDF
Recessed

SLVIDT-C
SLVIDS-C
SLVIDT
SLVIDS
Surface

LV1CR
Mini J-BOX Plate

Standard Finishes

White
W
Black
BK
Silver
SVR

Anodized Aluminum

xxxx-B for Aluminum to be Brushed

Anodized Black
AABK
Anodized
DK. Bronze
AADB
Anodized
LT. Bronze
AALB
Anodized
Champagne
AALC
Anodized Clear
AACL

Plated Aluminum

Antique
Brass
APAB
Aged
Bronze
APBZ
Polished
Chrome
APPC
Polished
Gold
APPG

Custom RAL - Custom finishes go to: tiger-coatings.com Add # in Notes

Standard Finishes – colors are powder coated and do not add to delivery lead time.
Anodized Aluminum – can be smooth or brushed, color can vary fixture to fixture and adds 2-3 weeks to lead time. Anodized finish is limited in fixture size.
Plated Aluminum – is a mirror finish in chrome and gold and adds 2 weeks to lead time.
Wood Finishes – so realistic, wood finish can add up to 3-4 weeks to lead time.

Wood Finishes

Light Bamboo
LW01
Light Pine
LW02
Teak
LW03
Dark Bamboo
LW04
Dark Cherry
LW05
Brushed Chestnut
LW06
Chestnut
DW01
Dark Chestnut
DW02
Cherry
DW03
Dark Mahogany
DW04
Mahogany
DW05
Walnut Pine
DW06
Dark Walnut Oak
DW07

Consult Factory

Electrical / Driver

- Drivers - Our drivers are specifically selected based on fixture application to ensure ultimate reliability and long life. We use only UL recognized brands of LED drivers. Our LED drivers feature HPF (high power factor), universal voltage 110 - 277 VAC and include 0-10V dimming. Please note, 277v has longer distances from power feed to power feed than 120v.
- If required, we can supply premium drivers such as Lutron, Eldoed and others upon request. Advanced control systems compliant drivers such as POE,DALI, DMX, etc. are also available, please consult factory.
- Rated life (90% survivorship) of 50,000 hours at 50° C max. ambient (and 70° C max. case) temperature. At maximum driver load: Efficiency >84%, PF>0.9, THD
- Our LED drivers feature HPF (high power factor), universal voltage 110 - 277 VAC and include 0-10V dimming.
- Remote emergency drivers are an option, long life, high temperature, recyclable Ni-Cad battery pack with test switch and charge indicator. EMR is a minimum of 90 minutes operation to meet code.
- POE - We are working with Molex/Igor POE systems. We can add a POE driver into our fixtures or remote them. Based on the fixture you select, we will notify you (or you can contact the factory) to see if we can install the P-driver or the P-driver needs to be remote. Just add POE1 in the spec and we will advise. Please keep in mind you need to specify a complete POE control system before specifying POE1.

LED Performance

LED Output	CCT Color Temp	Watts	Lumens	Lumens per Watt	CCT Multiplier
Low	3000	4.5 WPF (Indirect 2.1 WPF)	350 LPF	78 LPW	$2700 = 1.07 / 3000 = 1 / 3500 = .97 / 4000 = .93$
Medium	3000	6.5 WPF (Indirect 3.1 WPF)	500 LPF	78 LPW	$2700 = 1.07 / 3000 = 1 / 3500 = .97 / 4000 = .93$
High	3000	9.7 WPF (Indirect 4.7 WPF)	123 LPF	78 LPW	$2700 = 1.07 / 3000 = 1 / 3500 = .97 / 4000 = .93$
Very High	3000	13.5 WPF (Indirect 6.5 WPF)	1000 LPF	78 LPW	$2700 = 1.07 / 3000 = 1 / 3500 = .97 / 4000 = .93$

- The table above is a quick reference. When calculating loads make sure you add direct and indirect LPW to get total wattage. Please refer to photometric report for detailed information.
- Our light engines are precisely designed for optimal operation of LED assemblies.
- Our standard LED's CCT (correlated color temperature) range is 2700K to 4000K. Other CCT values are available upon request.
- We log LED bin codes for each project we supply to ensure color consistency and keep a record of those projects for future reference.
- CRI offered is 80+, and 90+ Note: on 90+ CRI use .85 multiplier
- Tunable white, warm dim and other special LED colors available.
- Custom Lumens Available
- We design our own printed circuit boards to ensure high luminescence efficiency, low thermal resistance and long-term reliable operation.
- Light engines are easily replaced.
- We use only recognized brand LED's with 3 SDCM (standard deviation color matching) with high color consistency. 2 SDCM available upon request.
- If you require a special LED manufacturer, please contact us. LED chip manufacturers used by Picasso are primarily (but not limited to) Nichia, Cree and Samsung.
- LRP - "LED Reel Program" – LED's for printed circuit boards come on reels' like old 8mm projectors and they're sold in lots just like fabric. At Picasso Lighting, we have a program where we make sure all of your reels come from the same lot for each project. This ensures excellent color consistency in large open spaces.
- LED life is rated at 50,000 hours

Certifications & Warranties

Edge Light Guide Lens

PENDANT SMALL (REMOTE DRIVERS)

TYPE

PROJECT

- Limited five-year (50,000 hours) warranty on all products. Limited ten-year (100,000 hours) warranty on all Lutron drivers.
- DLC listed products will have DLC Logo.
- Chicago Plenum and IC products are available upon request.
- Warranty does not cover damage caused by transport, damage caused by using the fixture in an area it is not UL rated for, damage caused by negligence, lack of maintenance, attempts to repair by unqualified or unauthorized personnel, by using non-original accessories/parts, fixtures installed in systems without power surge protection.
- UL and CUL listed for dry and damp locations.
- IBEW USA Union All fixtures are IBEW manufactured and assembled in the USA.
- We manufacture based on approved spec sheets and submittals signed by professionals responsible. Change orders must be in writing and will delay delivery.
- Picasso Lighting must receive in writing any thought to be defective products discovered, no later than 4 weeks from delivery to; ttoledo@picassoltg.com. Picasso Lighting will send a field technician to the site to evaluate the said defective product. We do accept field repair from licensed electrical contractors but not without a written agreement signed by Picasso Lighting official. Failure to adhere to all warranty and certifications will void any recompense and the warranty.



Note: Picasso lighting industries, LLC reserves the right to make any design changes which will not affect the overall appearance or performance of the product. All ceilings to be adequately reinforced by others. All fixtures to be wired by licensed electrician only. The information contained herein is the sole property of Picasso Lighting Industries, LLC and may not be used without prior written consent of Picasso Lighting Industries, LLC. The 'USGBC member logo' is a trademark owned by the U.S. Green building council and is used by permission. The logo signifies only that Picasso Lighting Industries, LLC is a USGBC member; USGBC does not review, certify, or endorse the products or services offered by its members.