

# Echo Regress Lens

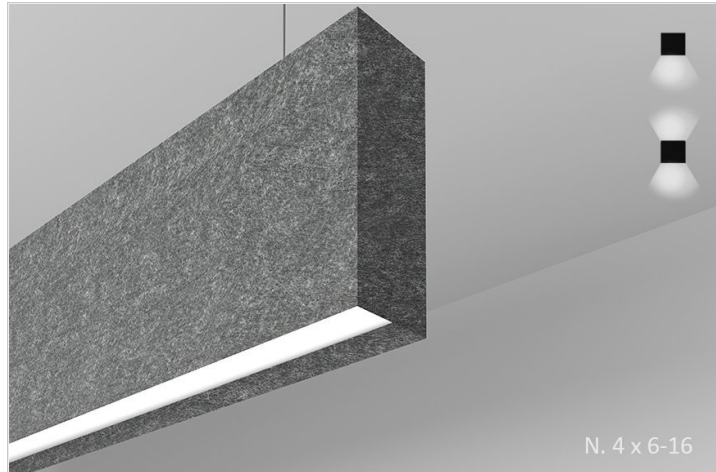
## PENDANT ACOUSTIC

TYPE

PROJECT

### Overview

- /e'koostik/; the properties or qualities of a room or building that determine how sound is transmitted in it
- Echo Series was designed to look as a standard Linear Fixture.
- DESIGNER SELECTIONS
- Acoustic Series come in 3 types. Apex Regress Lens, Echo Regress Lens and WAT - NON-LIT.
- Acoustic Series has multiple choices for canopies and colors, just scroll down for your choices.
- Acoustic Series is available in almost any CCT available in the market, we've selected the most popular, but don't let that stop you from asking for something different.
- Acoustic Series is available in direct only and direct/indirect for both liners lens. We can also tune in our drivers to specific lumen output if required.
- Acoustic Series is always available for your projects special customization needs, just contact your local agent.
- Acoustic Series qualifies as "Made in America" and is part of our ECO sustainable end of life program.
- For all: ies files, pictures, instructions, rfa files, and warranties...scroll to bottom.
- Please be advised that our Echo Series is available in Surface, Wall and Pendant
- Noise Reduction: An NRC rating of 0.45-0.9, almost 20 times that of a standard drywall.
- Fire Safety: Class A fire rating per ASTM E84, so there's no limit to where it can be used architecturally.



N. 4 x 6-16

# Echo Regress Lens

## PENDANT ACOUSTIC

TYPE  
PROJECT

### Ordering Format

PART NUMBER: ECO-PR

Size	Lumens Direct	Lumens Indirect	CCT Available	CRI Available
<b>4x6H</b> = 4 Feet x 6 Inches	<b>D3</b> = 350 LPF	<b>I3</b> = 350 LPF	<b>27</b> = 2700 Kelvins	<b>80</b> = 80-85 CRI
<b>4x8H</b> = 4 Feet x 8 Inches	<b>D5</b> = 500 LPF	<b>I5</b> = 500 LPF	<b>30</b> = 3000 Kelvins	<b>90</b> = 90-95 CRI
<b>4x12H</b> = 4 Feet x 12 Inches	<b>D7</b> = 750 LPF	<b>I7</b> = 750 LPF	<b>35</b> = 3500 Kelvins	
<b>4x16H</b> = 4 Feet x 16 Inches	<b>D10</b> = 1000 LPF	<b>I10</b> = 1000 LPF	<b>40</b> = 4000 Kelvins	
<b>8x6H</b> = 8 Feet x 6 Inches		<b>NN</b> = Not Needed	<b>TW</b> = Tunable White	
<b>8x8H</b> = 8 Feet x 8 Inches				
<b>8x12H</b> = 8 Feet x 12 Inches				
<b>8x16H</b> = 8 Feet x 16 Inches				
Direct Optics	Mounting	Driver / Voltage	Fixture Finish	Canopy/Power Cord Color
<b>FW</b> = Frosted White (Direct Only)	<b>AC1R</b> = Round 5in Canopy JBox - 5in Support	<b>ND 1</b> = Non Dim 120VAC	<b>AM1</b> = Frost	<b>CWPW</b> = Canopy White/Power Cord White
<b>FW/MC</b> = Direct Frosted White- Indirect Matte Clear	<b>AC1S</b> = Square 5in Canopy JBox - 5in Support	<b>ND 2</b> = Non Dim 277 VAC	<b>AM2</b> = Chambray	<b>CWPB</b> = Canopy White/Power Cord Black
<b>FW/BW</b> = Direct Frosted White- Indirect Batwing (uplight only)	<b>ACD1R</b> = Round 5in Canopy JBox - 2in Support Slot Grid	<b>ZT 1</b> = 0-10v Dimming 120VAC 1%	<b>AM3</b> = Smoke	<b>CBPB</b> = Canopy Black/Power Cord Black
	<b>ACD1S</b> = Square 5in Canopy JBox - 2in Support Slot Grid	<b>ZT 2</b> = 0-10v Dimming 277 VAC 1%	<b>AM4</b> = Pewter	<b>CBPW</b> = Canopy Black/Power Cord White
	<b>ACD2R</b> = Round 5in Canopy JBox - 2in Support T Grid	<b>CC</b> = Custom Control - Add in Notes	<b>AM5</b> = Slate	
	<b>ACD2S</b> = Square 5in Canopy JBox - 2in Support T Grid	<b>LE 1</b> = Lutron EcoSystem 1% DLC EE CCR PWM SoftON FadeToBlack	<b>AM6</b> = Tar	
	<b>ACUR</b> = Round 5in Canopy JBox - .5in Support Unistrut		<b>AM7</b> = Ecru	
	<b>ACUS</b> = Square 5in Canopy JBox - .5in Support Unistrut		<b>AM8</b> = Bark	
	<b>ACRR</b> = Square 5in Canopy JBox - 2in Support 1/4 Rod		<b>AM9</b> = Linen	
			<b>AM10</b> = Sunshine	
			<b>AM11</b> = Mandarin	
			<b>AM12</b> = Grass	
			<b>AM13</b> = Ochre	
			<b>AM14</b> = Sky	
			<b>AM15</b> = Cobalt	
			<b>AM16</b> = Ivory	
			<b>AM17</b> = Cadet	
			<b>AM18</b> = Eucalyptus	
			<b>AM19</b> = Fossil	
			<b>AM20</b> = Greige	
			<b>AM21</b> = Ironbark	
			<b>AM22</b> = Malachite	
			<b>AM23</b> = Merbau	
			<b>AM24</b> = Spotted Gum	
Options				

# Echo Regress Lens

PENDANT ACOUSTIC

TYPE  
PROJECT

- AWN** = Lutron Athena Wireless Node (RF only)
- AWNS** = Lutron Athena Wireless Node (with Sensor)
- IW** = Inverter Wiring
- 2C** = 2 circuit wiring Direct /Indirect
- EMD** = Emergency Driver Battery Back-Up 120-277v
- OS** = Occupancy Sensor
- CA** = Custom Angles - Add in Notes

NOTES

ORDER NUMBER:

# Echo Regress Lens

## PENDANT ACOUSTIC

TYPE

PROJECT

### Construction & Mounting

#### HOUSING

Sides are 1/2" x 6 to 16 inches thick. Acoustic sound reduction linear panels and are supplied in nominal lengths of 4 ft. 8 ft.. Side panels do not need to be removed during installation or for maintenance. Fixtures may be continuously rowed (contact factory for details). Internal components are constructed from min. 20 gauge die-formed steel. Easy access to driver and LED boards. Custom sizes are available.

#### REFLECTOR

Integral powder-coated LED housings with excessive reflectivity for increased lumen output is built into our luminaires

#### FINISH

Please use color chart below to select your acoustic sound reducing panels.

#### OPTICS

Direct component provided with a soft white acrylic lens formulated for LED light sources. Lens snaps out for maintenance. Indirect LED strips are mounted in an extruded aluminum channel with an integral clear acrylic dust cover.

#### MOUNTING

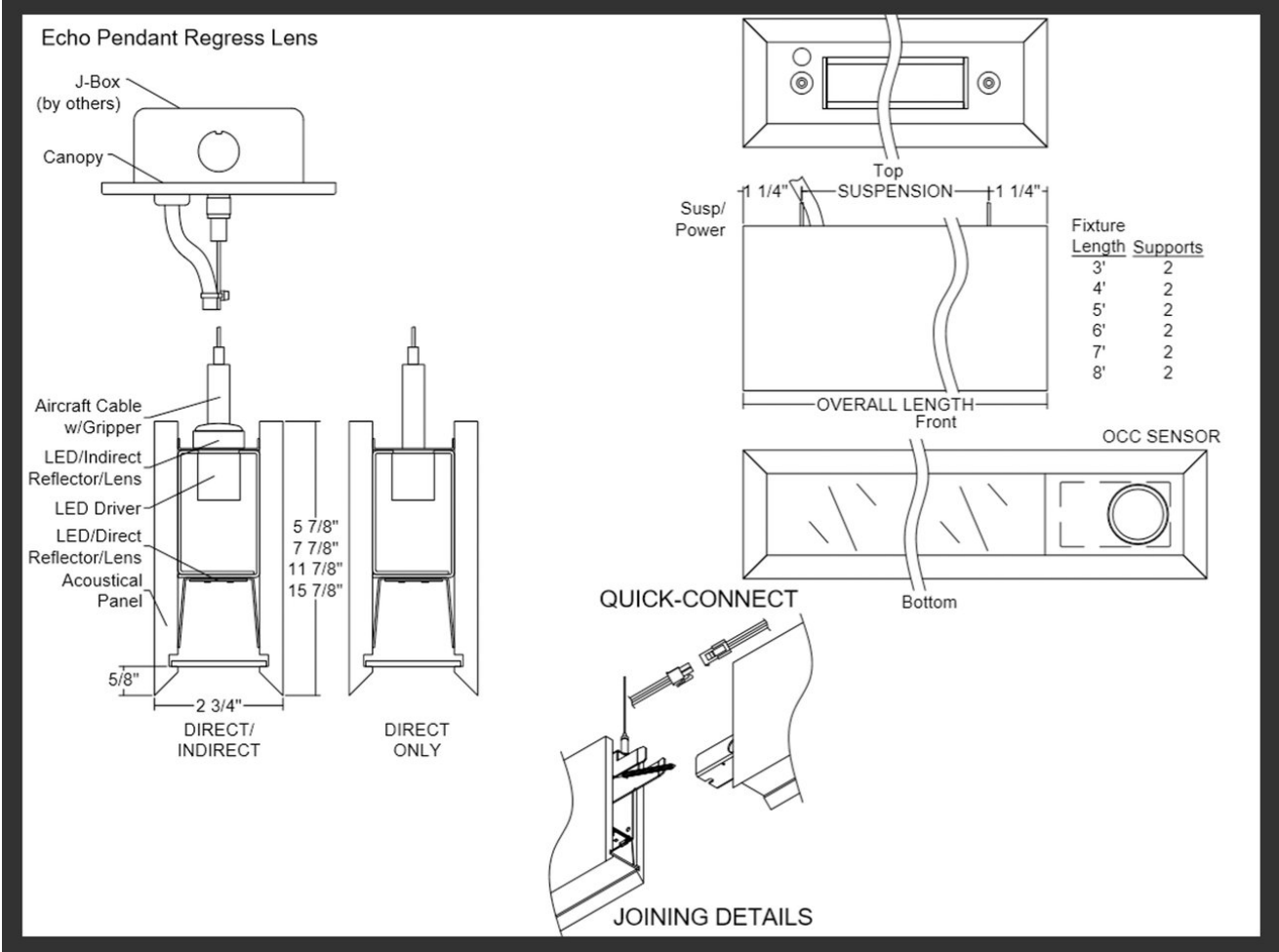
Cable mounting with various size canopies and power feeds. If not selected in options, canopy color and cord will be white. Cable uses gripper style locking for field adjustments. Canopy mounts to standard J-box. Can also be stem mounted. See options for more information.



# Echo Regress Lens

PENDANT ACOUSTIC

TYPE  
PROJECT



# Echo Regress Lens

PENDANT ACOUSTIC

TYPE  
PROJECT



BARK



CADET



CHAMBRAY



COBALT



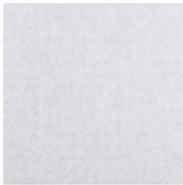
ECRU



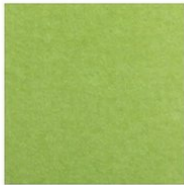
EUCALYPTUS



FOSSIL



FROST



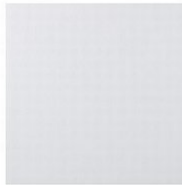
GRASS



GREIGE



IRONBARK



IVORY



LINEN



MALACHITE



MANDARIN



MERBAU



OCHRE



PEWTER



SKY



SLATE



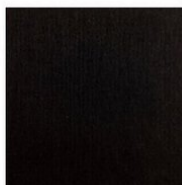
SMOKE



SPOTTED GUM



SUNSHINE



TAR

## Electrical / Driver

- Drivers - Our drivers are specifically selected based on fixture application to ensure ultimate reliability and long life. We use only UL recognized brands of LED drivers. Our LED drivers feature HPF (high power factor), universal voltage 110 - 277 VAC and include 0-10V dimming. Please note, 277v has longer distances from power feed to power feed than 120v.
- If required, we can supply premium drivers such as Lutron, Eldoed and others upon request. Advanced control systems compliant drivers such as POE,DALI, DMX, etc. are also available, please consult factory.
- Rated life (90% survivorship) of 50,000 hours at 50° C max. ambient (and 70° C max. case) temperature. At maximum driver load: Efficiency >84%, PF>0.9, THD
- POE - We are working with Molex/Igor POE systems. We can add a POE driver into our fixtures or remote them. Based on the fixture you select, we will notify you (or you can contact the factory) to see if we can install the P-driver or the P-driver needs to be remote. Just add POE1 in the spec and we will advise. Please keep in mind you need to specify a complete POE control system before specifying POE1.
- Our LED drivers feature HPF (high power factor), universal voltage 110 - 277 VAC and include 0-10V dimming.
- Emergency drivers are factory installed as an option, long life, high temperature, recyclable Ni-Cad battery pack with test switch and charge indicator. EMR is minimum of 90 minutes operation to meet code.
- Whip - Six feet long, wiring RHOS/Reach Compliant, 18 gauge, 600v rated, Specify wired to the fixture as an OPTION.

## LED Performance

LED Output	CCT Color Temp	Watts	Lumens	Lumens per Watt	CCT Multiplier
Low	3000	2.88 WPF	350 LPF	122 LPW	2700*.95
Medium	3000	4.15 WPF	500 LPF	119 LPW	3000*1
High	3000	6.33 WPF	750 LPF	119 LPW	3500*1.01
Very High	3000	8.48 WPF	1000 LPF	118 LPW	4000*1.03

- The table above is a quick reference. When calculating loads make sure you add direct and indirect LPW to get total wattage. Please refer to photometric report for detailed information.
- Our light engines are precisely designed for optimal operation of LED assemblies.
- Our standard LED's CCT (correlated color temperature) range is 2700K to 4000K. Other CCT values are available upon request.
- We log LED bin codes for each project we supply to ensure color consistency and keep a record of those projects for future reference.
- CRI offered is 80+, and 90+ Note: on 90+ CRI use .85 multiplier
- Tunable white, warm dim and other special LED colors available.
- Custom Lumens Available
- We design our own printed circuit boards to ensure high luminescence efficiency, low thermal resistance and long-term reliable operation.
- Light engines are easily replaced.
- We use only recognized brand LED's with 3 SDCM (standard deviation color matching) with high color consistency. 2 SDCM available upon request.
- If you require a special LED manufacturer, please contact us. LED chip manufacturers used by Picasso are primarily (but not limited to) Nichia, Cree and Samsung.
- LRP - "LED Reel Program" – LED's for printed circuit boards come on reels' like old 8mm projectors and they're sold in lots just like fabric. At Picasso Lighting, we have a program where we make sure all of your reels come from the same lot for each project. This ensures excellent color consistency in large open spaces.
- LED life is rated at 50,000 hours

## Certifications & Warranties

# Echo Regress Lens

## PENDANT ACOUSTIC

TYPE

PROJECT

- Limited five-year (50,000 hours) warranty on all products. Limited ten-year (100,000 hours) warranty on all Lutron drivers.
- I.C. rated fixtures are available upon request.
- Chicago Plenum and IC products are available upon request.
- Warranty does not cover damage caused by transport, damage caused by using the fixture in an area it is not UL rated for, damage caused by negligence, lack of maintenance, attempts to repair by unqualified or unauthorized personnel, by using non-original accessories/parts, fixtures installed in systems without power surge protection.
- UL and CUL listed for dry and damp locations.
- IBEW USA Union All fixtures are IBEW manufactured and assembled in the USA.
- We manufacture based on approved spec sheets and submittals signed by professionals responsible. Change orders must be in writing and will delay delivery.
- Picasso Lighting must receive in writing any thought to be defective products discovered, no later than 4 weeks from delivery to; [ttoledo@picassoltg.com](mailto:ttoledo@picassoltg.com). Picasso Lighting will send a field technician to the site to evaluate the said defective product. We do accept field repair from licensed electrical contractors but not without a written agreement signed by Picasso Lighting official. Failure to adhere to all warranty and certifications will void any recompense and the warranty.



Note: Picasso lighting industries, LLC reserves the right to make any design changes which will not affect the overall appearance or performance of the product. All ceilings to be adequately reinforced by others. All fixtures to be wired by licensed electrician only. The information contained herein is the sole property of Picasso Lighting Industries, LLC and may not be used without prior written consent of Picasso Lighting Industries, LLC. The 'USGBC member logo' is a trademark owned by the U.S. Green building council and is used by permission. The logo signifies only that Picasso Lighting Industries, LLC is a USGBC member; USGBC does not review, certify, or endorse the products or services offered by its members.