

Overview

- Medilite /mede lit/ Noun: Medilite is a made up name by Picasso lighting to represent a light fixture for a medical facility that has specific lighting requirements
- The Medilite Series is a lighting fixture designed for hospital rooms that require 3 specific lighting scenarios. An exam light, reading light and general light.
- DESIGNER SELECTION
- The Medilite Series is twenty four inches in width, forty eight in length, and four and one eight in height.
- Medilite had high R9 value because of its crucial ability to render color
- Medilite Series qualifies as "Made in America" and "American Made", and it is also part of our ECO sustainable end of life program
- For all: ies files, pictures, instructions, rfa files, and warranties....scroll to bottom



Ordering Format

PART NUMBER: MED

| Size | Lumens Direct | CCT Available | CRI Available | Direct Optics |
|---|--|-----------------------------------|---|---------------------------|
| ML - AER Adult = 2' x 4' ML - EAR Child = 2' x 4' | 3C = 1400/3400/7300 | 334 = R3000K/A3000K/E4000K | 90 = 90-95 CRI | FW = Frosted White |
| Mounting | Driver / Voltage | Fixture Finish | Options | |
| S = 9/16 Slot Grid T = T-Bar 9/16 and 15/16 FK = Flange (trim) Kit | ND = Non-Dim Universal 120-277VAC ZT = 0-10v Dimming 120v-277v Dual 1% LE1 = Lutron EcoSystem 1% SoftOnFadeToBlack CC = Custom Control - Add in notes | W = White | AWN = Lutron Athena Wireless Node (RF only) AWNS = Lutron Athena Wireless Node (with Sensor) OS = Occupancy Sensor EMD = Emergency Driver - Battery Backup 120-277VAC WH = Whip 6' | |

NOTES

ORDER NUMBER:

Construction & Mounting

HOUSING

Excellent design, precision-tooling and automated production is the combination that produces our troffer style housings. Most industry today uses pre-painted, folded 22 gauge steel. We use die formed 20 gauge steel with welded and sanded corners, that produce a seamless troffer with no light leaks. Ceiling thickness unrestricted. Easy access to all three lighting compartments. One door covers all three compartments with a smooth contemporary look.

REFLECTOR

Integral powder-coated LED housing with excessive reflectivity for increased lumen output

FINISH

Standard powder-coated color for the Medilite is white. Troffer style fixtures are not limited to white, consult factory for special applications.

OPTICS

Shielding is a semi-frosted lens designed to enhance and maximize LED performance. All three lens compartments are secured to the door for easy cleaning.

MOUNTING

Our recessed fixtures are made to be mounted in slot grid, T-bar and sheetrock ceilings. See mounting detail. Other ceiling types, please consult the factory, we can accommodate many different applications.

ANODIZED ALUMINUM



ALUMINUM PLATING

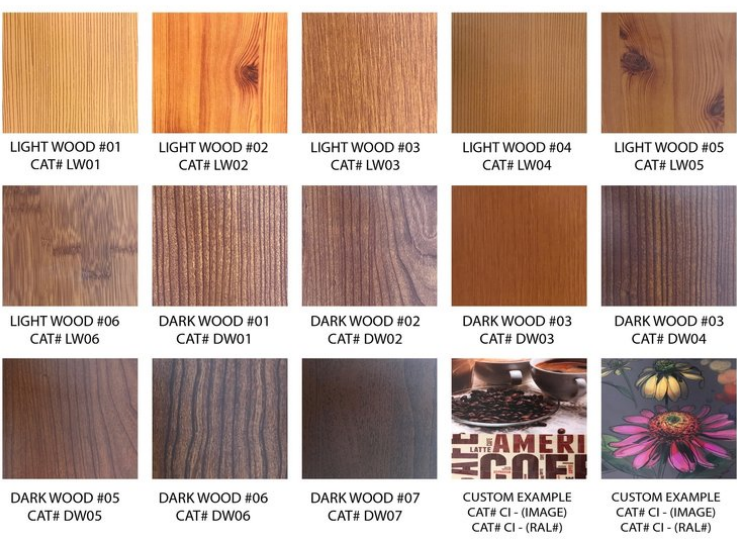


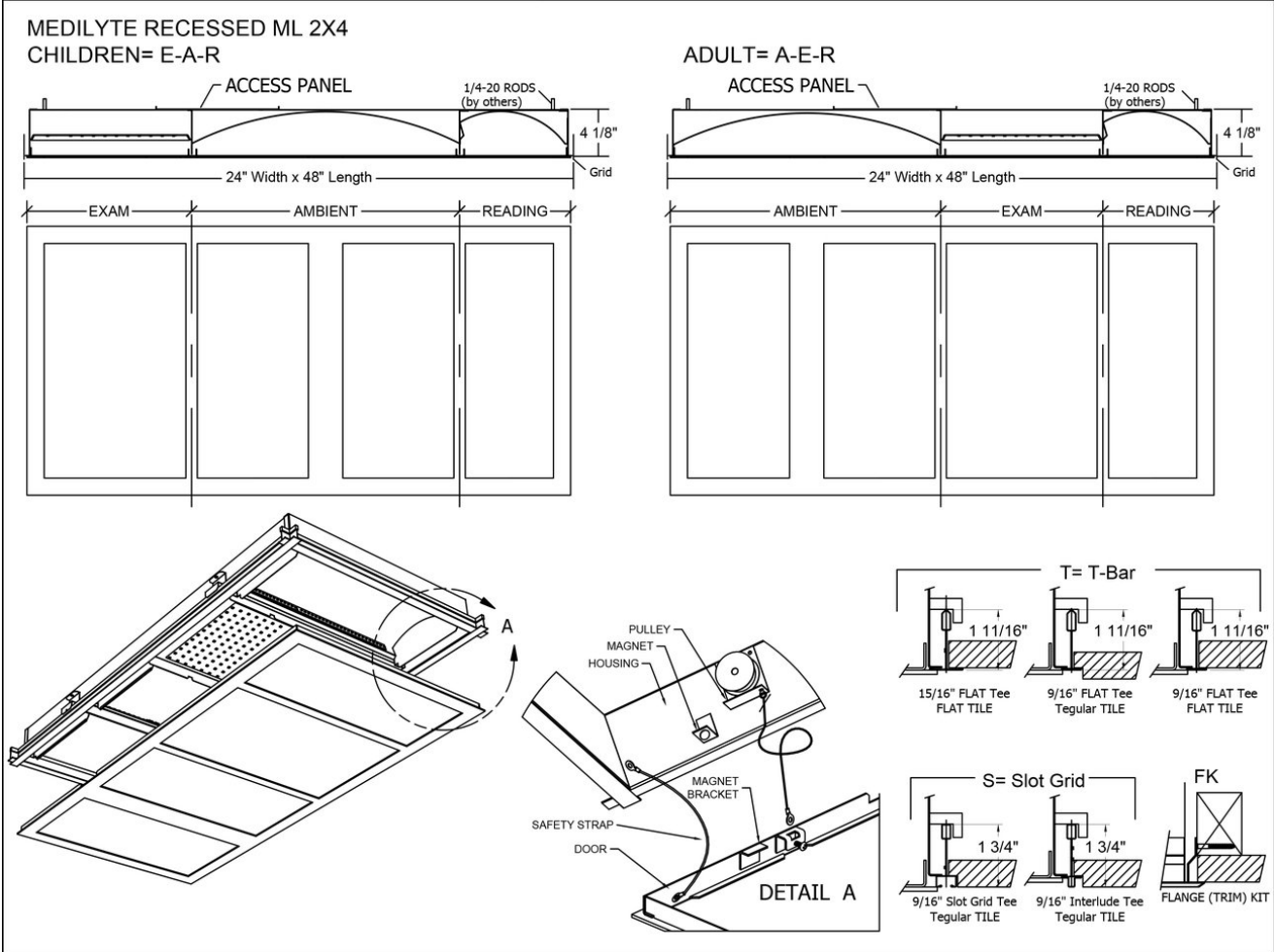
STANDARD FINISHES



PLEASE CONTACT LOCAL SALES REP FOR ACTUAL COLOR SAMPLE

WOOD FINISHES





Electrical / Driver

- Drivers - Our drivers are specifically selected based on fixture application to ensure ultimate reliability and long life. We use only UL recognized brands of LED drivers. Our LED drivers feature HPF (high power factor), universal voltage 110 - 277 VAC and include 0-10V dimming. Please note, 277v has longer distances from power feed to power feed then 120v.
- If required, we can supply premium drivers such as Lutron, Eldoled and others upon request. Advanced control systems compliant drivers such as POE,DALI, DMX, etc. are also available, please consult factory.
- Rated life (90% survivorship) of 50,000 hours at 50° C max. ambient (and 70° C max. case) temperature. At maximum driver load: Efficiency >84%, PF>0.9, THD
- POE - We are working with Molex/Igor POE systems. We can add a POE driver into our fixtures or remote them. Based on the fixture you select, we will notify you (or you can contact the factory) to see if we can install the P-driver or the P-driver needs to be remote. Just add POE1 in the spec and we will advise. Please keep in mind you need to specify a complete POE control system before specifying POE1.
- Our LED drivers feature HPF (high power factor), universal voltage 110 - 277 VAC and include 0-10V dimming.
- Emergency drivers are factory installed as an option, long life, high temperature, recyclable Ni-Cad battery pack with test switch and charge indicator. EMR is minimum of 90 minutes operation to meet code.
- Whip - Six feet long, wiring RHOS/Reach Compliant, 18 gauge, 600v rated, Specify wired to the fixture as an OPTION.

LED Performance

| LED Output | CCT Color Temp | Watts | Lumens | Lumens per Watt | CCT Multiplier |
|------------|----------------|-------|--------|-----------------|----------------|
| Reading | 3000 | 25TW | 1400TL | 56 | N/A |
| Ambient | 3000 | 52TW | 3400TL | 65 | N/A |
| Exam | 4000 | 98TW | 7300TL | 75 | N/A |

- The table above is a quick reference. When calculating loads make sure you add direct and indirect LPW to get total wattage. Please refer to photometric report for detailed information.
- Our light engines are precisely designed for optimal operation of LED assemblies.
- Our standard LED's CCT (correlated color temperature) range is 2700K to 4000K. Other CCT values are available upon request.
- We log LED bin codes for each project we supply to ensure color consistency and keep a record of those projects for future reference.
- CRI offered is 80+, and 90+ Note: on 90+ CRI use .85 multiplier
- Tunable white, warm dim and other special LED colors available.
- Custom Lumens Available
- We design our own printed circuit boards to ensure high luminescence efficiency, low thermal resistance and long-term reliable operation.
- Light engines are easily replaced.
- We use only recognized brand LED's with 3 SDCM (standard deviation color matching) with high color consistency. 2 SDCM available upon request.
- If you require a special LED manufacturer, please contact us. LED chip manufacturers used by Picasso are primarily (but not limited to) Nichia, Cree and Samsung.
- LRP - "LED Reel Program" – LED's for printed circuit boards come on reels' like old 8mm projectors and they're sold in lots just like fabric. At Picasso Lighting, we have a program where we make sure all of your reels come from the same lot for each project. This ensures excellent color consistency in large open spaces.
- LED life is rated at 50,000 hours

Certifications & Warranties

Medilite

HEALTHCARE APPLICATIONS

TYPE PROJECT

- Limited five-year (50,000 hours) warranty on all products. Limited ten-year (100,000 hours) warranty on all Lutron drivers.
- I.C. rated fixtures are available upon request.
- Chicago Plenum and IC products are available upon request.
- Warranty does not cover damage caused by transport, damage caused by using the fixture in an area it is not UL rated for, damage caused by negligence, lack of maintenance, attempts to repair by unqualified or unauthorized personnel, by using non-original accessories/parts, fixtures installed in systems without power surge protection.
- UL and CUL listed for dry and damp locations.
- IBEW USA Union All fixtures are IBEW manufactured and assembled in the USA.
- We manufacture based on approved spec sheets and submittals signed by professionals responsible. Change orders must be in writing and will delay delivery.
- Picasso Lighting must receive in writing any thought to be defective products discovered, no later than 4 weeks from delivery to; ttoledo@picassoltg.com. Picasso Lighting will send a field technician to the site to evaluate the said defective product. We do accept field repair from licensed electrical contractors but not without a written agreement signed by Picasso Lighting official. Failure to adhere to all warranty and certifications will void any recompense and the warranty.



Note: Picasso lighting industries, LLC reserves the right to make any design changes which will not affect the overall appearance or performance of the product. All ceilings to be adequately reinforced by others. All fixtures to be wired by licensed electrician only. The information contained herein is the sole property of Picasso Lighting Industries, LLC and may not be used without prior written consent of Picasso Lighting Industries, LLC. The 'USGBC member logo' is a trademark owned by the U.S. Green building council and is used by permission. The logo signifies only that Picasso Lighting Industries, LLC is a USGBC member; USGBC does not review, certify, or endorse the products or services offered by its members.