



**PICASSO LIGHTING INDUSTRIES, LLC**  
46 Sellers Street, Kearny, NJ 07032  
201.246.8188

## **Indoor Distribution Test Report**

# **Picasso Lighting Industries, LLC**

46 Sellers St.  
Kearny, NJ 07032

### **Photopia Photometric Analysis & Optical Design**

#### **Catalog Number**

MX4-F-4-D10-30-80-FL-W

White Housing - Recessed - Direct - Frosted White Lens

#### **Test Number**

IES-P00119

#### **Test Date**

Thu Oct 25 17:04:01 2018

The results contained in this report pertain only to the tested sample.  
This report shall not be reproduced, except in full, without written approval of Picasso Lighting Industries, LLC.

MX4-F-4-D10-30-80-FL-W  
White Housing - Recessed - Direct - Frosted White Lens  
LED (3000K 80+ CRI)

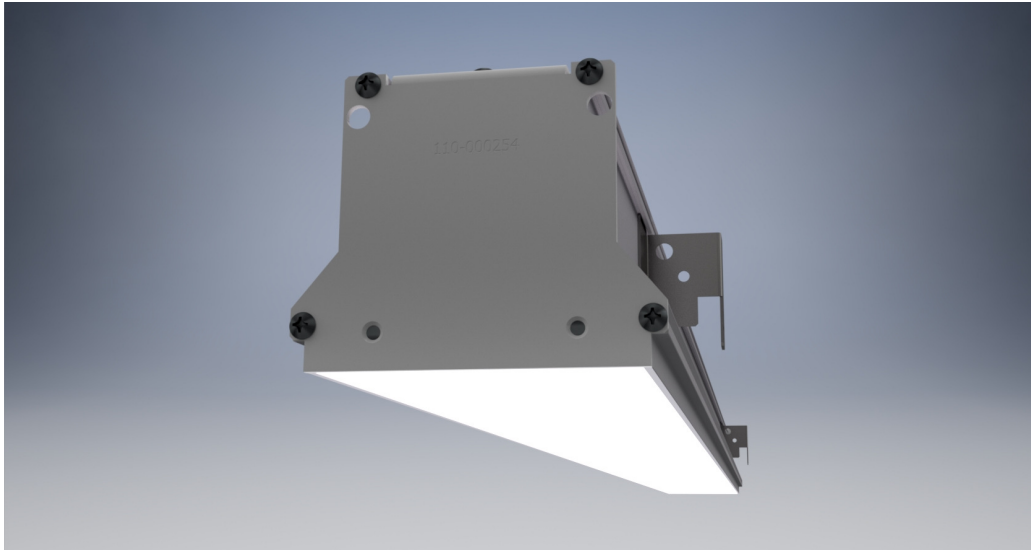


Image may differ slightly from actual unit.

### Summary of Results

#### Output:

<b>Watts:</b>	44.34 W
<b>Lumens:</b>	4,042.07 lm
<b>Efficiency:</b>	N/A
<b>Efficacy:</b>	90.74 lm/W

#### Spacing Criterion

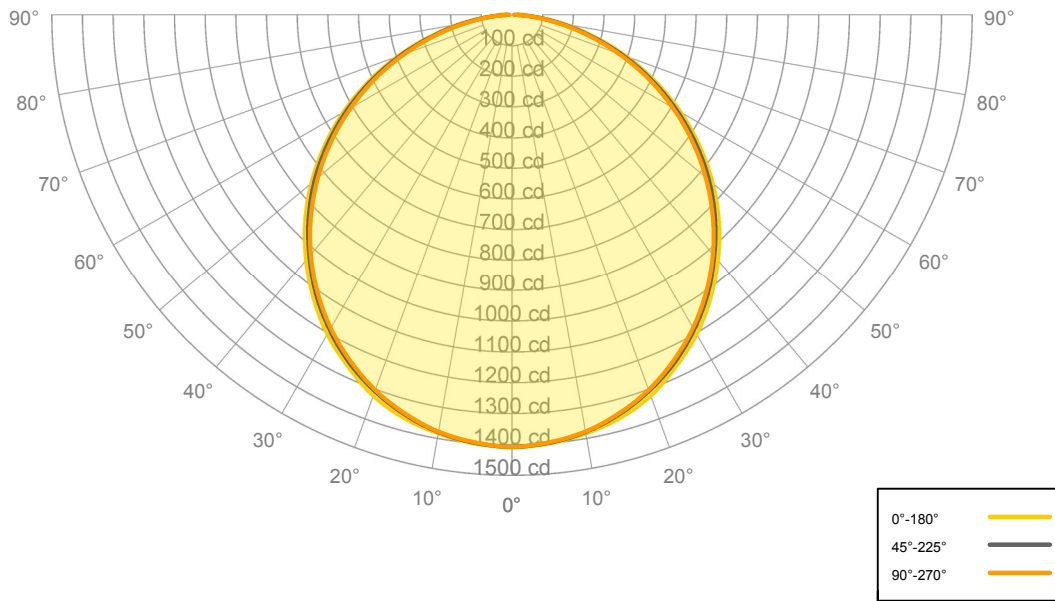
<b>Two luminaires, plane 0°</b>	1.26
<b>Two luminaires, plane 90°</b>	1.24
<b>Four luminaires</b>	1.37

#### Full Beam Angle

<b>0° - 180°</b>	113.72°
<b>90° - 270°</b>	111.21°

Calculated results may not be representative of field performance.  
Ballast factors have not been applied.

**Candela Polar Plot**



**Zonal Lumen Summary**

Zone	Lumens	% Fixture	Zone	Lumens	% Fixture
0° - 10°	159.69	3.95%	90° - 100°	3.13	0.08%
10° - 20°	380.09	9.40%	100° - 110°	0.00	0.00%
20° - 30°	575.97	14.25%	100° - 120°	0.00	0.00%
30° - 40°	694.69	17.19%	120° - 130°	0.00	0.00%
40° - 50°	720.97	17.84%	130° - 140°	0.00	0.00%
50° - 60°	651.29	16.11%	140° - 150°	0.00	0.00%
60° - 70°	495.09	12.25%	150° - 160°	0.00	0.00%
70° - 80°	281.51	6.96%	160° - 170°	0.00	0.00%
80° - 90°	82.77	2.05%	170° - 180°	0.00	0.00%
0° - 90°	4,042.07	100.00%	0° - 180°	4,042.07	100.00%



**Candela Distribution**

	0.00°	22.50°	45.00°	67.50°	90.00°
0.00°	1,409.22	1,409.22	1,409.22	1,409.22	1,409.22
5.00°	1,401.94	1,403.64	1,401.08	1,401.39	1,399.45
10.00°	1,385.02	1,382.65	1,381.63	1,380.22	1,380.04
15.00°	1,360.43	1,353.45	1,349.24	1,347.65	1,346.29
20.00°	1,321.69	1,313.89	1,305.93	1,303.12	1,302.19
25.00°	1,265.25	1,258.99	1,252.60	1,247.27	1,245.60
30.00°	1,203.56	1,194.33	1,187.20	1,181.61	1,180.35
35.00°	1,128.15	1,121.51	1,112.38	1,107.54	1,104.54
40.00°	1,044.16	1,036.22	1,027.00	1,023.56	1,020.08
45.00°	953.76	945.08	936.81	929.94	926.12
50.00°	853.70	845.07	838.45	830.73	825.25
55.00°	746.47	740.02	731.77	721.24	718.27
60.00°	634.07	627.55	618.64	609.37	605.43
65.00°	515.83	510.50	501.81	494.38	490.48
70.00°	395.64	390.89	382.83	374.50	370.72
75.00°	276.38	272.49	264.61	257.62	254.49
80.00°	168.64	163.82	156.80	151.40	149.50
85.00°	77.24	73.08	66.92	62.35	61.03
90.00°	20.47	14.62	9.82	7.54	6.88

**Average Luminaire Luminance [cd/m²]**

	0.00°	45.00°	90.00°
0.00°	14,481	14,481	14,481
45.00°	13,861	13,614	13,459
55.00°	13,374	13,110	12,868
65.00°	12,543	12,202	11,926
75.00°	10,973	10,506	10,104
85.00°	9,107	7,890	7,196



**Coefficients of Utilization – Zonal Cavity Method**

Values are lumens delivered to the workplane.

	<b>pf<sub>c</sub></b>	20%	20%	20%	20%	20%	20%	20%	20%	20%	20%	20%	20%	20%	20%	20%	20%	20%	
	<b>pcc</b>	80%	80%	80%	80%	70%	70%	70%	70%	50%	50%	50%	30%	30%	30%	10%	10%	10%	0%
	<b>pw</b>	70%	50%	30%	10%	70%	50%	30%	10%	50%	30%	10%	50%	30%	10%	50%	30%	10%	0%
<b>RCR</b>	<b>0</b>	4,815	4,815	4,815	4,815	4,703	4,703	4,703	4,703	4,493	4,493	4,493	4,301	4,301	4,301	4,125	4,125	4,125	4,042
	<b>1</b>	4,395	4,200	4,026	3,868	4,284	4,108	3,949	3,805	3,935	3,804	3,684	3,776	3,669	3,570	3,630	3,544	3,463	3,378
	<b>2</b>	3,995	3,659	3,382	3,149	3,888	3,582	3,327	3,111	3,437	3,222	3,037	3,304	3,124	2,967	3,181	3,032	2,900	2,812
	<b>3</b>	3,642	3,213	2,881	2,617	3,541	3,148	2,841	2,593	3,027	2,763	2,546	2,914	2,690	2,501	2,810	2,620	2,457	2,368
	<b>4</b>	3,335	2,847	2,490	2,218	3,241	2,793	2,460	2,202	2,691	2,400	2,171	2,595	2,344	2,140	2,507	2,290	2,111	2,022
	<b>5</b>	3,067	2,545	2,180	1,911	2,981	2,499	2,156	1,900	2,413	2,110	1,878	2,332	2,066	1,857	2,257	2,024	1,837	1,750
	<b>6</b>	2,834	2,293	1,930	1,669	2,756	2,254	1,911	1,661	2,180	1,874	1,646	2,112	1,839	1,631	2,047	1,806	1,616	1,532
	<b>7</b>	2,629	2,081	1,725	1,476	2,558	2,048	1,710	1,470	1,985	1,680	1,459	1,926	1,652	1,448	1,871	1,625	1,437	1,356
	<b>8</b>	2,449	1,900	1,555	1,318	2,385	1,872	1,543	1,314	1,818	1,519	1,305	1,767	1,496	1,297	1,720	1,473	1,289	1,211
	<b>9</b>	2,289	1,746	1,413	1,188	2,232	1,722	1,403	1,185	1,675	1,383	1,178	1,631	1,364	1,172	1,590	1,345	1,165	1,091
	<b>10</b>	2,148	1,613	1,292	1,079	2,096	1,591	1,284	1,076	1,551	1,267	1,071	1,513	1,251	1,066	1,477	1,236	1,061	990

**Cone of Light**

Mtg Height	Light Level	0°-180° Beam Diameter	90°-270° Beam Diameter
6 ft	39 fc	18 ft	18 ft
8 ft	22 fc	24 ft	24 ft
10 ft	14 fc	30 ft	30 ft
12 ft	10 fc	36 ft	36 ft
15 ft	6 fc	45 ft	45 ft