



**PICASSO LIGHTING INDUSTRIES, LLC**  
46 Sellers Street, Kearny, NJ 07032  
201.246.8188

## **Indoor Distribution Test Report**

# **Picasso Lighting Industries, LLC**

46 Sellers St.  
Kearny, NJ 07032

### **Photopia Photometric Analysis & Optical Design**

#### **Catalog Number**

MX4-F-4-D5-30-80-FL-W

White Housing - Recessed - Direct - Frosted White Lens

#### **Test Number**

IES-P00117

#### **Test Date**

Tue Oct 23 13:21:50 2018

The results contained in this report pertain only to the tested sample.  
This report shall not be reproduced, except in full, without written approval of Picasso Lighting Industries, LLC.

MX4-F-4-D5-30-80-FL-W  
 White Housing - Recessed - Direct - Frosted White Lens  
 LED (3000K 80+ CRI)

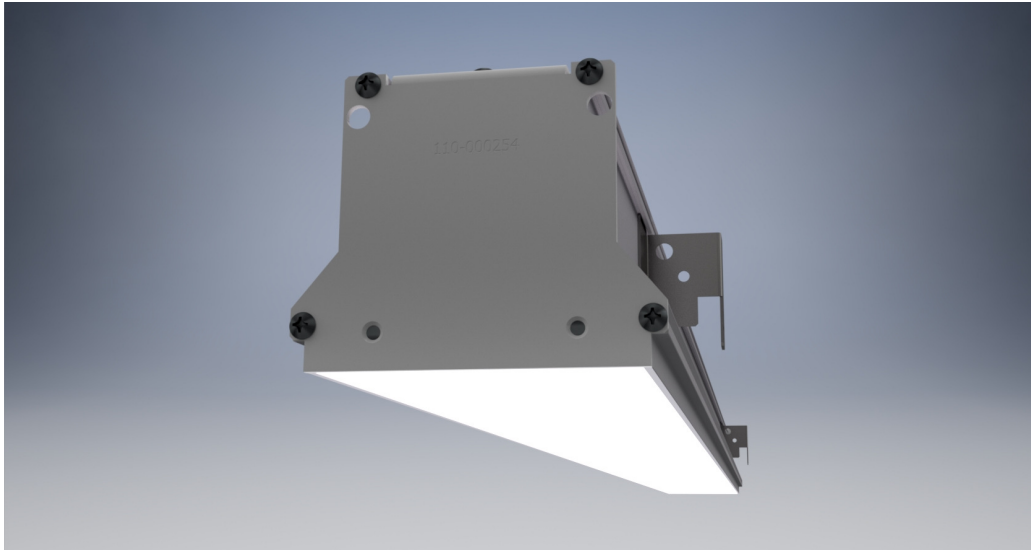


Image may differ slightly from actual unit.

**Summary of Results**

**Output:**

<b>Watts:</b>	22.49 W
<b>Lumens:</b>	2,012.24 lm
<b>Efficiency:</b>	N/A
<b>Efficacy:</b>	89.04 lm/W

**Spacing Criterion**

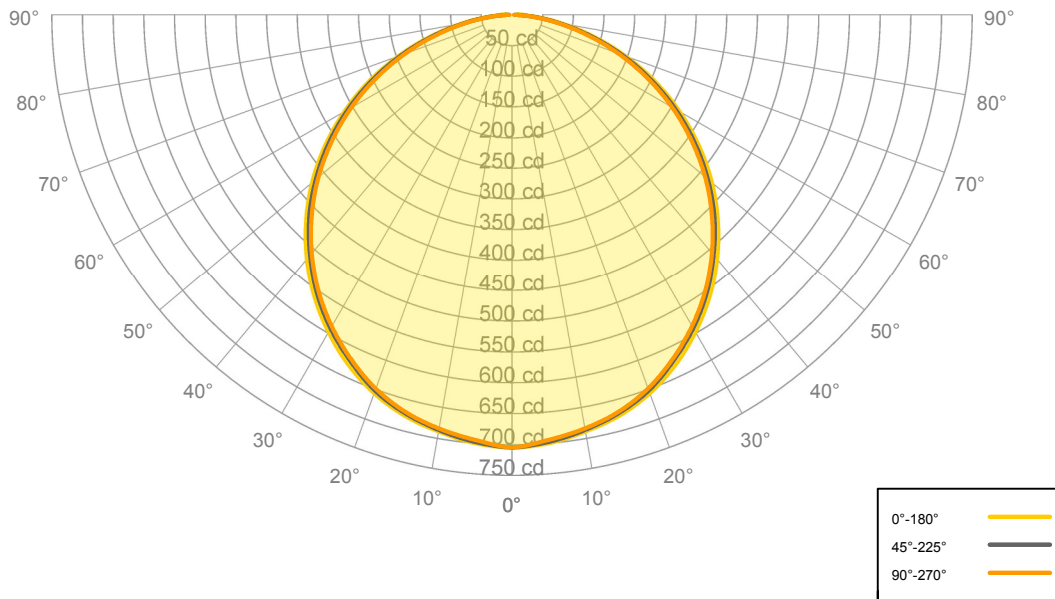
<b>Two luminaires, plane 0°</b>	1.25
<b>Two luminaires, plane 90°</b>	1.24
<b>Four luminaires</b>	1.37

**Full Beam Angle**

<b>0° - 180°</b>	113.4°
<b>90° - 270°</b>	110.87°

Calculated results may not be representative of field performance.  
 Ballast factors have not been applied.

**Candela Polar Plot**



**Zonal Lumen Summary**

Zone	Lumens	% Fixture	Zone	Lumens	% Fixture
0° - 10°	79.61	3.96%	90° - 100°	1.57	0.08%
10° - 20°	189.22	9.40%	100° - 110°	0.00	0.00%
20° - 30°	286.76	14.25%	100° - 120°	0.00	0.00%
30° - 40°	345.68	17.18%	120° - 130°	0.00	0.00%
40° - 50°	358.98	17.84%	130° - 140°	0.00	0.00%
50° - 60°	324.26	16.11%	140° - 150°	0.00	0.00%
60° - 70°	246.47	12.25%	150° - 160°	0.00	0.00%
70° - 80°	140.12	6.96%	160° - 170°	0.00	0.00%
80° - 90°	41.15	2.05%	170° - 180°	0.00	0.00%
0° - 90°	2,012.24	100.00%	0° - 180°	2,012.24	100.00%



**Candela Distribution**

	0.00°	22.50°	45.00°	67.50°	90.00°
0.00°	705.26	705.26	705.26	705.26	705.26
5.00°	700.53	698.99	698.81	699.01	695.63
10.00°	689.48	689.46	687.34	687.35	684.88
15.00°	676.40	673.52	672.58	670.20	670.34
20.00°	656.69	653.88	652.11	648.06	648.71
25.00°	630.24	626.59	622.90	621.79	619.74
30.00°	598.02	595.90	590.84	588.20	586.81
35.00°	561.59	557.56	553.84	550.06	549.58
40.00°	520.07	516.12	511.76	509.04	507.55
45.00°	474.52	470.64	467.12	462.83	461.11
50.00°	425.29	421.42	417.04	412.49	411.55
55.00°	371.88	368.60	364.10	359.42	357.49
60.00°	315.21	312.27	308.00	303.27	301.81
65.00°	257.33	254.34	249.85	245.74	243.58
70.00°	196.78	195.14	190.74	186.33	184.64
75.00°	137.71	135.77	131.67	128.04	126.72
80.00°	83.39	81.51	77.84	75.41	73.89
85.00°	38.54	36.36	33.34	30.98	30.18
90.00°	10.19	7.29	4.91	3.86	3.51

**Average Luminaire Luminance [cd/m²]**

	0.00°	45.00°	90.00°
0.00°	7,247	7,247	7,247
45.00°	6,896	6,788	6,701
55.00°	6,663	6,523	6,405
65.00°	6,257	6,075	5,923
75.00°	5,468	5,228	5,031
85.00°	4,544	3,931	3,558



**Coefficients of Utilization – Zonal Cavity Method**

Values are lumens delivered to the workplane.

<b>RCR</b>	<b>pf<sub>c</sub></b>	20%	20%	20%	20%	20%	20%	20%	20%	20%	20%	20%	20%	20%	20%	20%	20%	20%	20%
	<b>pc<sub>c</sub></b>	80%	80%	80%	80%	70%	70%	70%	70%	50%	50%	50%	30%	30%	30%	10%	10%	10%	0%
	<b>pw</b>	70%	50%	30%	10%	70%	50%	30%	10%	50%	30%	10%	50%	30%	10%	50%	30%	10%	0%
	<b>0</b>	2,397	2,397	2,397	2,397	2,341	2,341	2,341	2,341	2,237	2,237	2,237	2,141	2,141	2,141	2,053	2,053	2,053	2,012
	<b>1</b>	2,188	2,091	2,004	1,926	2,133	2,045	1,966	1,894	1,959	1,894	1,834	1,880	1,827	1,777	1,807	1,764	1,724	1,682
	<b>2</b>	1,989	1,822	1,684	1,568	1,935	1,783	1,656	1,549	1,711	1,604	1,512	1,645	1,555	1,477	1,583	1,510	1,444	1,400
	<b>3</b>	1,813	1,600	1,434	1,303	1,763	1,567	1,414	1,291	1,507	1,376	1,268	1,451	1,339	1,245	1,399	1,304	1,223	1,179
	<b>4</b>	1,660	1,417	1,240	1,104	1,613	1,390	1,225	1,096	1,339	1,195	1,081	1,292	1,167	1,066	1,248	1,140	1,051	1,007
	<b>5</b>	1,527	1,267	1,085	951	1,484	1,244	1,073	946	1,201	1,051	935	1,161	1,029	925	1,123	1,008	914	871
	<b>6</b>	1,411	1,142	961	831	1,372	1,122	951	827	1,086	933	820	1,051	916	812	1,019	899	805	763
	<b>7</b>	1,309	1,036	859	735	1,274	1,019	851	732	988	837	726	959	823	721	931	809	715	675
<b>8</b>	1,219	946	774	656	1,187	932	768	654	905	756	650	880	745	646	856	734	642	603	
<b>9</b>	1,140	869	703	591	1,111	857	698	590	834	689	587	812	679	583	792	670	580	543	
<b>10</b>	1,069	803	643	537	1,043	792	639	536	772	631	533	753	623	531	735	615	528	493	

**Cone of Light**

Mtg Height	Light Level	0°-180° Beam Diameter	90°-270° Beam Diameter
6 ft	20 fc	18 ft	18 ft
8 ft	11 fc	24 ft	24 ft
10 ft	7 fc	30 ft	30 ft
12 ft	5 fc	36 ft	36 ft
15 ft	3 fc	45 ft	45 ft