



PICASSO LIGHTING INDUSTRIES, LLC
46 Sellers Street, Kearny, NJ 07032
201.246.8188

Indoor Distribution Test Report

Picasso Lighting Industries, LLC

46 Sellers St.
Kearny, NJ 07032

Photopia Photometric Analysis & Optical Design

Catalog Number

MX4-F-4-D3-30-80-FL-W

White Housing - Recessed - Direct - Frosted White Lens

Test Number

IES-P00116

Test Date

Tue Oct 23 11:12:22 2018

The results contained in this report pertain only to the tested sample.
This report shall not be reproduced, except in full, without written approval of Picasso Lighting Industries, LLC.

MX4-F-4-D3-30-80-FL-W
White Housing - Recessed - Direct - Frosted White Lens
LED (3000K 80+ CRI)

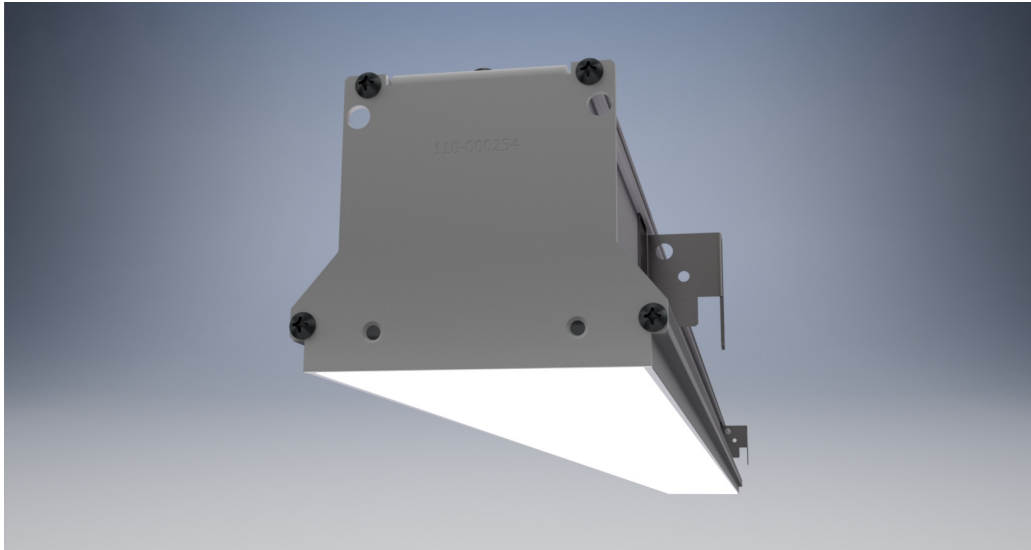


Image may differ slightly from actual unit.

Summary of Results

Output:

Watts:	15.92 W
Lumens:	1,408.48 lm
Efficiency:	N/A
Efficacy:	88.05 lm/W

Spacing Criterion

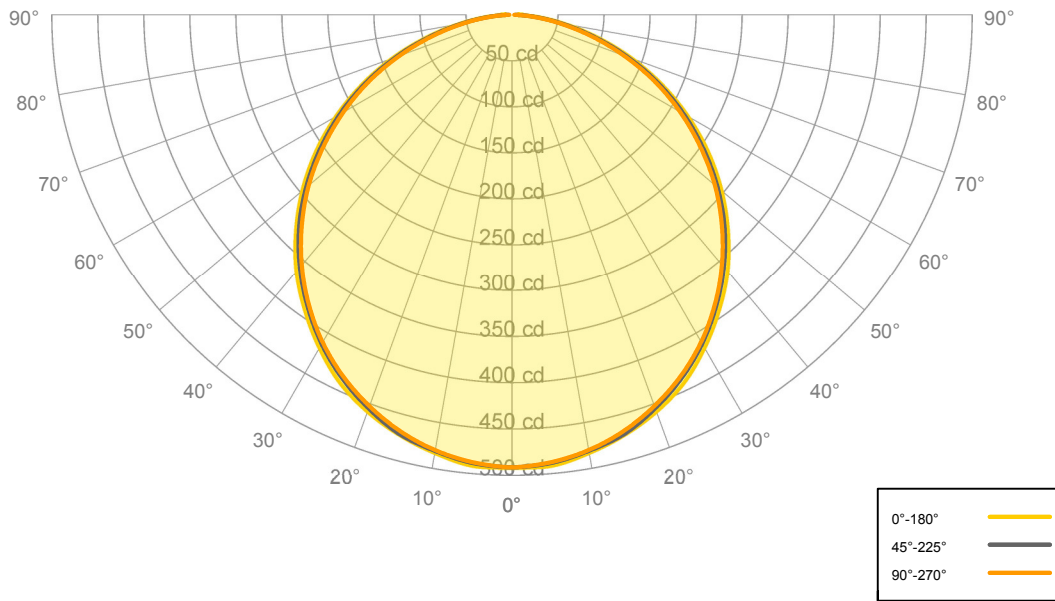
Two luminaires, plane 0°	1.26
Two luminaires, plane 90°	1.24
Four luminaires	1.37

Full Beam Angle

0° - 180°	113.63°
90° - 270°	111.05°

Calculated results may not be representative of field performance.
Ballast factors have not been applied.

Candela Polar Plot



Zonal Lumen Summary

Zone	Lumens	% Fixture	Zone	Lumens	% Fixture
0° - 10°	55.69	3.95%	90° - 100°	1.11	0.08%
10° - 20°	132.43	9.40%	100° - 110°	0.00	0.00%
20° - 30°	200.69	14.25%	100° - 120°	0.00	0.00%
30° - 40°	241.99	17.18%	120° - 130°	0.00	0.00%
40° - 50°	251.34	17.84%	130° - 140°	0.00	0.00%
50° - 60°	226.85	16.11%	140° - 150°	0.00	0.00%
60° - 70°	172.58	12.25%	150° - 160°	0.00	0.00%
70° - 80°	98.08	6.96%	160° - 170°	0.00	0.00%
80° - 90°	28.83	2.05%	170° - 180°	0.00	0.00%
0° - 90°	1,408.48	100.00%	0° - 180°	1,408.48	100.00%



Candela Distribution

	0.00°	22.50°	45.00°	67.50°	90.00°
0.00°	491.88	491.88	491.88	491.88	491.88
5.00°	491.68	489.75	489.13	487.96	488.23
10.00°	483.25	482.44	481.37	479.74	480.48
15.00°	472.49	472.56	471.84	468.63	468.59
20.00°	458.95	457.63	455.29	454.30	452.61
25.00°	441.73	439.30	436.18	434.10	433.68
30.00°	418.43	417.39	413.39	411.85	411.11
35.00°	392.36	390.75	387.03	385.48	384.61
40.00°	364.36	361.07	358.47	356.62	355.20
45.00°	331.87	329.51	327.03	324.33	322.74
50.00°	297.31	295.02	291.96	288.88	288.10
55.00°	260.32	257.49	254.35	251.48	250.04
60.00°	220.73	218.55	215.60	212.62	211.07
65.00°	179.61	178.08	175.12	172.07	171.24
70.00°	138.08	136.19	133.55	130.37	129.34
75.00°	96.51	95.06	92.05	89.68	88.75
80.00°	58.62	57.10	54.49	52.61	51.98
85.00°	26.98	25.39	23.35	21.70	21.24
90.00°	7.18	5.19	3.51	2.68	2.49

Average Luminaire Luminance [cd/m²]

	0.00°	45.00°	90.00°
0.00°	5,055	5,055	5,055
45.00°	4,823	4,753	4,690
55.00°	4,664	4,557	4,480
65.00°	4,367	4,258	4,164
75.00°	3,832	3,655	3,524
85.00°	3,181	2,753	2,504



Coefficients of Utilization – Zonal Cavity Method

Values are lumens delivered to the workplane.

RCR	pf_c	20%	20%	20%	20%	20%	20%	20%	20%	20%	20%	20%	20%	20%	20%	20%	20%	20%	20%
	pcc	80%	80%	80%	80%	70%	70%	70%	70%	50%	50%	50%	30%	30%	30%	10%	10%	10%	0%
	pw	70%	50%	30%	10%	70%	50%	30%	10%	50%	30%	10%	50%	30%	10%	50%	30%	10%	0%
	0	1,678	1,678	1,678	1,678	1,639	1,639	1,639	1,639	1,566	1,566	1,566	1,499	1,499	1,499	1,437	1,437	1,437	1,408
	1	1,532	1,464	1,403	1,348	1,493	1,431	1,376	1,326	1,371	1,325	1,284	1,316	1,279	1,244	1,265	1,235	1,207	1,177
	2	1,392	1,275	1,178	1,097	1,355	1,248	1,159	1,084	1,198	1,123	1,058	1,151	1,089	1,034	1,108	1,057	1,010	980
	3	1,269	1,120	1,004	912	1,234	1,097	990	904	1,055	963	887	1,016	937	871	979	913	856	825
	4	1,162	992	868	773	1,129	973	857	767	938	836	756	904	817	746	874	798	736	705
	5	1,069	887	760	666	1,039	871	751	662	841	735	654	813	720	647	786	705	640	610
	6	987	799	672	582	960	785	666	579	760	653	574	736	641	568	713	629	563	534
	7	916	725	601	514	892	714	596	512	692	586	508	671	576	504	652	566	501	473
	8	853	662	542	459	831	652	538	458	634	529	455	616	521	452	599	513	449	422
9	798	608	492	414	778	600	489	413	584	482	411	568	475	408	554	469	406	380	
10	748	562	450	376	730	555	447	375	541	442	373	527	436	372	515	431	370	345	

Cone of Light

Mtg Height	Light Level	0°-180° Beam Diameter	90°-270° Beam Diameter
6 ft	14 fc	18 ft	18 ft
8 ft	8 fc	24 ft	24 ft
10 ft	5 fc	30 ft	30 ft
12 ft	3 fc	36 ft	36 ft
15 ft	2 fc	45 ft	45 ft