



PICASSO LIGHTING INDUSTRIES, LLC
46 Sellers Street, Kearny, NJ 07032
201.246.8188

Indoor Distribution Test Report

Picasso Lighting Industries, LLC

46 Sellers St.
Kearny, NJ 07032

Photopia Photometric Analysis & Optical Design

Catalog Number

MX2.5-F-4-D7-30-80-FW-W

White Housing - Recessed - Direct - Frosted White Lens

Test Number

IES-P00062

Test Date

Fri Sep 07 16:21:13 2018

The results contained in this report pertain only to the tested sample.
This report shall not be reproduced, except in full, without written approval of Picasso Lighting Industries, LLC.

MX2.5-F-4-D7-30-80-FW-W
White Housing - Recessed - Direct - Frosted White Lens
LED (3000K 80+ CRI)

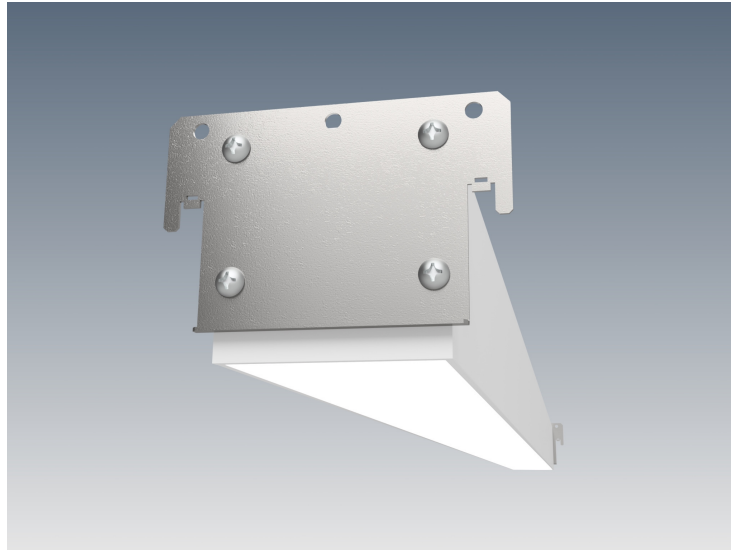


Image may differ slightly from actual unit.

Summary of Results

Output:

Watts:	37.32 W
Lumens:	3,015.16 lm
Efficiency:	N/A
Efficacy:	80.41 lm/W

Spacing Criterion

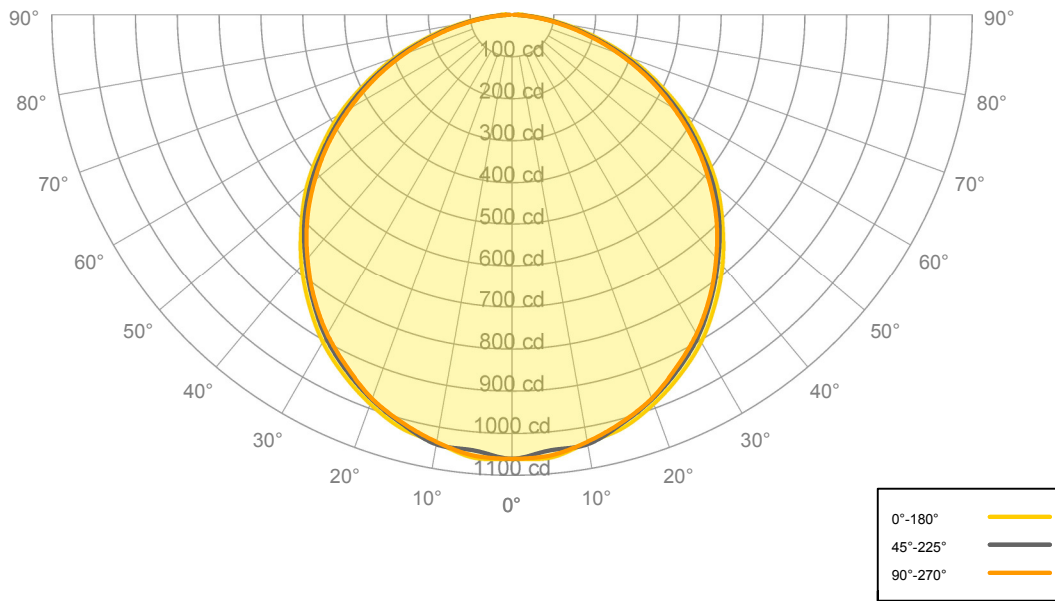
Two luminaires, plane 0°	1.26
Two luminaires, plane 90°	1.23
Four luminaires	1.37

Full Beam Angle

0° - 180°	113.35°
90° - 270°	110.4°

Calculated results may not be representative of field performance.
Ballast factors have not been applied.

Candela Polar Plot



Zonal Lumen Summary

Zone	Lumens	% Fixture	Zone	Lumens	% Fixture
0° - 10°	120.07	3.98%	90° - 100°	1.96	0.07%
10° - 20°	285.54	9.47%	100° - 110°	0.00	0.00%
20° - 30°	431.71	14.32%	100° - 120°	0.00	0.00%
30° - 40°	519.57	17.23%	120° - 130°	0.00	0.00%
40° - 50°	538.63	17.86%	130° - 140°	0.00	0.00%
50° - 60°	485.48	16.10%	140° - 150°	0.00	0.00%
60° - 70°	367.68	12.19%	150° - 160°	0.00	0.00%
70° - 80°	207.50	6.88%	160° - 170°	0.00	0.00%
80° - 90°	59.00	1.96%	170° - 180°	0.00	0.00%
0° - 90°	3,015.16	100.00%	0° - 180°	3,015.16	100.00%



Candela Distribution

	0.00°	22.50°	45.00°	67.50°	90.00°
0.00°	1,061.83	1,061.83	1,061.83	1,061.83	1,061.83
5.00°	1,062.02	1,054.13	1,045.65	1,046.37	1,057.97
10.00°	1,038.10	1,040.77	1,043.00	1,040.13	1,037.06
15.00°	1,022.48	1,017.20	1,013.01	1,013.00	1,009.94
20.00°	990.24	985.02	978.99	980.33	976.91
25.00°	950.40	946.09	937.70	933.25	930.52
30.00°	904.37	894.17	890.27	884.95	882.19
35.00°	846.03	838.96	830.57	828.11	824.74
40.00°	782.78	775.97	767.36	762.69	760.28
45.00°	712.08	706.01	701.81	692.38	691.76
50.00°	640.69	634.26	627.06	617.37	615.21
55.00°	558.39	551.55	543.72	537.06	534.46
60.00°	476.69	468.80	460.30	451.58	447.35
65.00°	385.24	380.59	371.93	365.76	360.93
70.00°	298.02	292.43	283.44	274.41	272.57
75.00°	207.24	202.50	194.02	187.97	185.63
80.00°	126.19	121.39	113.62	108.51	106.10
85.00°	57.59	53.13	46.31	42.07	40.70
90.00°	14.80	9.43	5.59	4.27	3.83

Average Luminaire Luminance [cd/m²]

	0.00°	45.00°	90.00°
0.00°	15,095	15,095	15,095
45.00°	14,316	14,110	13,908
55.00°	13,840	13,476	13,247
65.00°	12,959	12,511	12,141
75.00°	11,383	10,657	10,196
85.00°	9,394	7,554	6,639



Coefficients of Utilization – Zonal Cavity Method

Values are lumens delivered to the workplane.

RCR	pf_c	20%	20%	20%	20%	20%	20%	20%	20%	20%	20%	20%	20%	20%	20%	20%	20%	20%	20%
	pc_c	80%	80%	80%	80%	70%	70%	70%	70%	50%	50%	50%	30%	30%	30%	10%	10%	10%	0%
	pw	70%	50%	30%	10%	70%	50%	30%	10%	50%	30%	10%	50%	30%	10%	50%	30%	10%	0%
	0	3,591	3,591	3,591	3,591	3,508	3,508	3,508	3,508	3,351	3,351	3,351	3,208	3,208	3,208	3,077	3,077	3,077	3,015
	1	3,280	3,135	3,006	2,889	3,197	3,067	2,949	2,842	2,938	2,840	2,751	2,819	2,740	2,667	2,710	2,646	2,587	2,523
	2	2,982	2,733	2,526	2,353	2,902	2,675	2,486	2,325	2,568	2,408	2,270	2,468	2,335	2,218	2,376	2,266	2,168	2,102
	3	2,719	2,400	2,154	1,957	2,644	2,352	2,123	1,939	2,262	2,065	1,904	2,178	2,011	1,870	2,100	1,959	1,838	1,771
	4	2,490	2,127	1,862	1,659	2,420	2,087	1,839	1,647	2,011	1,795	1,624	1,940	1,753	1,601	1,874	1,713	1,579	1,514
	5	2,291	1,902	1,630	1,430	2,227	1,868	1,613	1,422	1,803	1,578	1,406	1,743	1,545	1,390	1,687	1,514	1,375	1,310
	6	2,117	1,714	1,444	1,250	2,058	1,685	1,430	1,244	1,630	1,402	1,232	1,579	1,376	1,221	1,531	1,351	1,210	1,148
	7	1,964	1,555	1,291	1,105	1,911	1,531	1,279	1,101	1,484	1,257	1,092	1,440	1,236	1,084	1,399	1,216	1,076	1,016
	8	1,829	1,421	1,164	987	1,782	1,400	1,155	984	1,360	1,137	978	1,322	1,120	972	1,286	1,103	965	908
9	1,710	1,306	1,057	890	1,667	1,287	1,050	887	1,253	1,035	883	1,220	1,021	878	1,189	1,007	873	818	
10	1,605	1,206	967	808	1,566	1,190	961	807	1,160	949	803	1,132	937	799	1,105	925	795	742	

Cone of Light

Mtg Height	Light Level	0°-180° Beam Diameter	90°-270° Beam Diameter
6 ft	29 fc	18 ft	18 ft
8 ft	17 fc	24 ft	24 ft
10 ft	11 fc	30 ft	30 ft
12 ft	7 fc	36 ft	36 ft
15 ft	5 fc	44 ft	44 ft