



**PICASSO LIGHTING INDUSTRIES, LLC**  
46 Sellers Street, Kearny, NJ 07032  
201.246.8188

## **Indoor Distribution Test Report**

# **Picasso Lighting Industries, LLC**

46 Sellers St.  
Kearny, NJ 07032

### **Photopia Photometric Analysis & Optical Design**

#### **Catalog Number**

MX2.5-F-4-D5-30-80-FW-W

White Housing - Recessed - Direct - Frosted White Lens

#### **Test Number**

IES-P00061

#### **Test Date**

Fri Sep 07 15:47:06 2018

The results contained in this report pertain only to the tested sample.  
This report shall not be reproduced, except in full, without written approval of Picasso Lighting Industries, LLC.

MX2.5-F-4-D5-30-80-FW-W  
White Housing - Recessed - Direct - Frosted White Lens  
LED (3000K 80+ CRI)

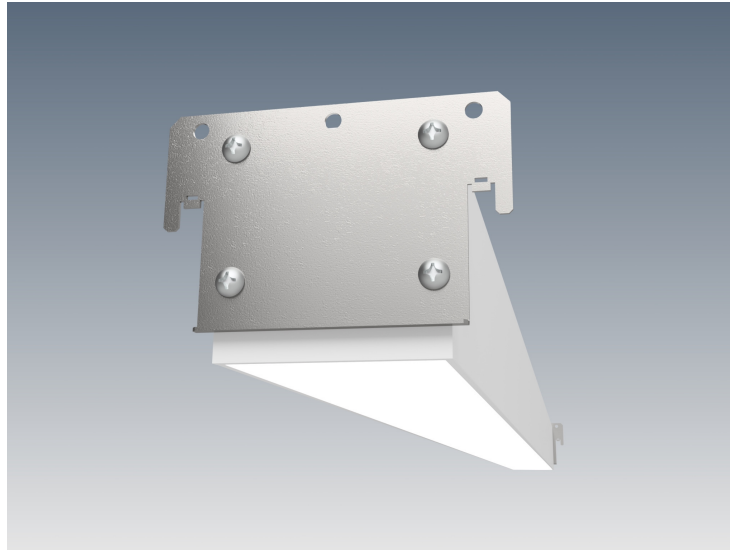


Image may differ slightly from actual unit.

### Summary of Results

#### Output:

<b>Watts:</b>	25.08 W
<b>Lumens:</b>	2,009.67 lm
<b>Efficiency:</b>	N/A
<b>Efficacy:</b>	79.75 lm/W

#### Spacing Criterion

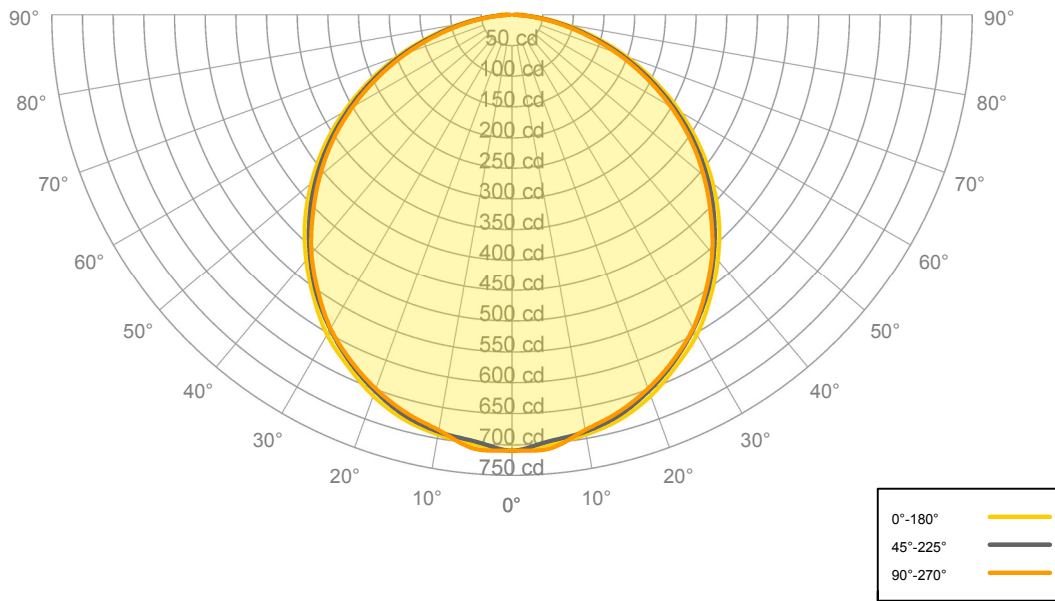
<b>Two luminaires, plane 0°</b>	1.25
<b>Two luminaires, plane 90°</b>	1.23
<b>Four luminaires</b>	1.35

#### Full Beam Angle

<b>0° - 180°</b>	113.19°
<b>90° - 270°</b>	110.1°

Calculated results may not be representative of field performance.  
Ballast factors have not been applied.

**Candela Polar Plot**



**Zonal Lumen Summary**

Zone	Lumens	% Fixture	Zone	Lumens	% Fixture
0° - 10°	80.09	3.99%	90° - 100°	1.31	0.07%
10° - 20°	190.13	9.46%	100° - 110°	0.00	0.00%
20° - 30°	287.61	14.31%	100° - 120°	0.00	0.00%
30° - 40°	346.68	17.25%	120° - 130°	0.00	0.00%
40° - 50°	359.05	17.87%	130° - 140°	0.00	0.00%
50° - 60°	323.63	16.10%	140° - 150°	0.00	0.00%
60° - 70°	244.68	12.18%	150° - 160°	0.00	0.00%
70° - 80°	138.41	6.89%	160° - 170°	0.00	0.00%
80° - 90°	39.38	1.96%	170° - 180°	0.00	0.00%
0° - 90°	2,009.67	100.00%	0° - 180°	2,009.67	100.00%



**Candela Distribution**

	0.00°	22.50°	45.00°	67.50°	90.00°
0.00°	710.61	710.61	710.61	710.61	710.61
5.00°	702.30	707.20	698.04	701.70	710.11
10.00°	694.47	693.89	690.32	689.61	687.49
15.00°	682.29	677.89	676.13	674.17	670.97
20.00°	661.18	657.00	652.64	651.30	648.77
25.00°	632.52	629.01	624.61	621.25	621.86
30.00°	602.79	599.22	591.92	588.42	590.80
35.00°	563.45	560.90	555.18	551.12	550.71
40.00°	521.82	517.81	512.23	508.45	508.17
45.00°	477.20	471.70	466.45	462.15	458.58
50.00°	426.91	422.98	416.90	411.10	408.39
55.00°	373.68	368.76	363.59	357.73	355.87
60.00°	316.12	312.03	306.25	299.95	299.08
65.00°	257.03	252.91	247.82	243.29	239.93
70.00°	197.56	193.59	188.99	184.01	181.43
75.00°	138.19	134.98	130.40	125.59	122.95
80.00°	84.08	80.79	76.33	72.17	70.86
85.00°	38.68	35.08	31.12	28.19	27.06
90.00°	9.91	6.28	3.69	2.93	2.52

**Average Luminaire Luminance [cd/m²]**

	0.00°	45.00°	90.00°
0.00°	10,102	10,102	10,102
45.00°	9,594	9,378	9,220
55.00°	9,262	9,012	8,820
65.00°	8,646	8,336	8,071
75.00°	7,590	7,162	6,753
85.00°	6,309	5,076	4,414



**Coefficients of Utilization – Zonal Cavity Method**

Values are lumens delivered to the workplane.

<b>RCR</b>	<b>pf<sub>c</sub></b>	20%	20%	20%	20%	20%	20%	20%	20%	20%	20%	20%	20%	20%	20%	20%	20%	20%	20%
	<b>pc<sub>c</sub></b>	80%	80%	80%	80%	70%	70%	70%	70%	50%	50%	50%	30%	30%	30%	10%	10%	10%	0%
	<b>pw</b>	70%	50%	30%	10%	70%	50%	30%	10%	50%	30%	10%	50%	30%	10%	50%	30%	10%	0%
	<b>0</b>	2,394	2,394	2,394	2,394	2,338	2,338	2,338	2,338	2,234	2,234	2,234	2,138	2,138	2,138	2,051	2,051	2,051	2,010
	<b>1</b>	2,186	2,090	2,003	1,926	2,131	2,044	1,965	1,894	1,958	1,893	1,834	1,879	1,826	1,777	1,806	1,764	1,724	1,682
	<b>2</b>	1,988	1,821	1,684	1,568	1,934	1,783	1,657	1,550	1,711	1,605	1,513	1,645	1,556	1,478	1,584	1,510	1,445	1,401
	<b>3</b>	1,812	1,600	1,435	1,304	1,762	1,568	1,415	1,292	1,507	1,377	1,269	1,452	1,340	1,247	1,400	1,306	1,225	1,181
	<b>4</b>	1,660	1,418	1,241	1,106	1,613	1,391	1,226	1,098	1,340	1,196	1,082	1,293	1,168	1,067	1,249	1,142	1,053	1,009
	<b>5</b>	1,527	1,268	1,087	953	1,484	1,245	1,075	948	1,202	1,052	937	1,162	1,030	927	1,125	1,009	916	873
	<b>6</b>	1,411	1,142	962	833	1,372	1,123	953	829	1,087	935	821	1,052	917	814	1,021	901	807	765
	<b>7</b>	1,309	1,037	860	737	1,274	1,020	853	734	989	838	728	960	824	723	933	810	717	677
	<b>8</b>	1,219	947	776	658	1,188	933	770	656	906	758	652	881	746	648	857	735	643	605
<b>9</b>	1,140	870	705	593	1,111	858	700	592	835	690	588	813	680	585	793	671	582	545	
<b>10</b>	1,070	804	645	539	1,044	793	641	538	773	632	535	754	624	533	736	617	530	495	

**Cone of Light**

Mtg Height	Light Level	0°-180° Beam Diameter	90°-270° Beam Diameter
6 ft	20 fc	18 ft	18 ft
8 ft	11 fc	24 ft	24 ft
10 ft	7 fc	29 ft	29 ft
12 ft	5 fc	35 ft	35 ft
15 ft	3 fc	44 ft	44 ft