

Indoor Distribution Test Report

Picasso Lighting Industries, LLC

46 Sellers St.
Kearny, NJ 07032

Photopia Photometric Analysis & Optical Design

Catalog Number
TAS-L-4'-D3-30K-80-OPL-W
(White Housing – Direct – Opal Lens)

Test Number

IES-P00082

Test Date

2017-03-22

The results contained in this report pertain only to the tested sample.
This report shall not be reproduced, except in full, without written approval of Picasso Lighting Industries, LLC.

Luminaire Description:	Stainless Steel Cover, Aluminum Base, Direct w/ Opal Lens
Lamp:	LED (3000K, 80+ CRI)
Installation:	Under Cabinet, Surface Mounted
Luminous Length:	47.00 in
Luminous Width:	1.97 in
Luminous Height:	0.00 in

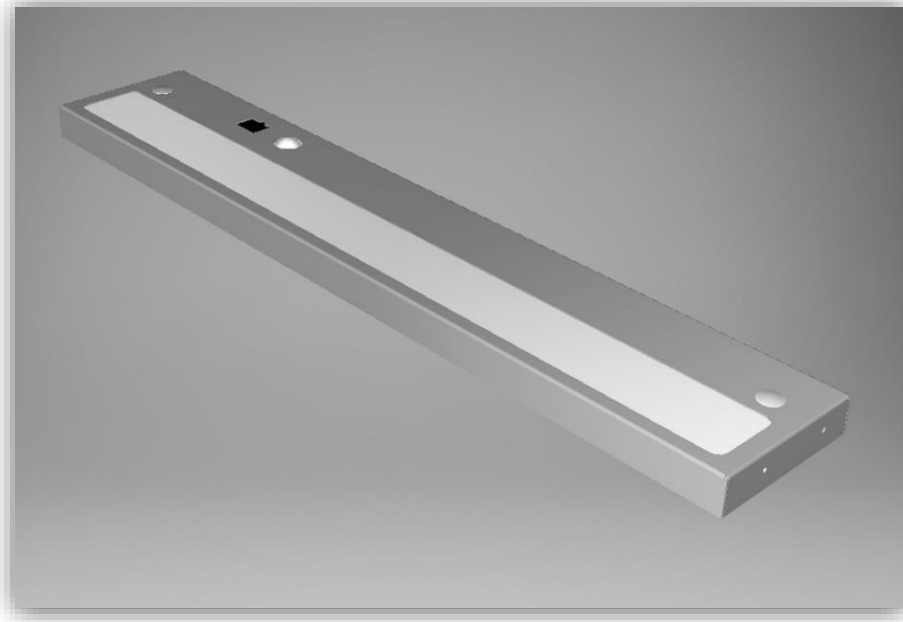


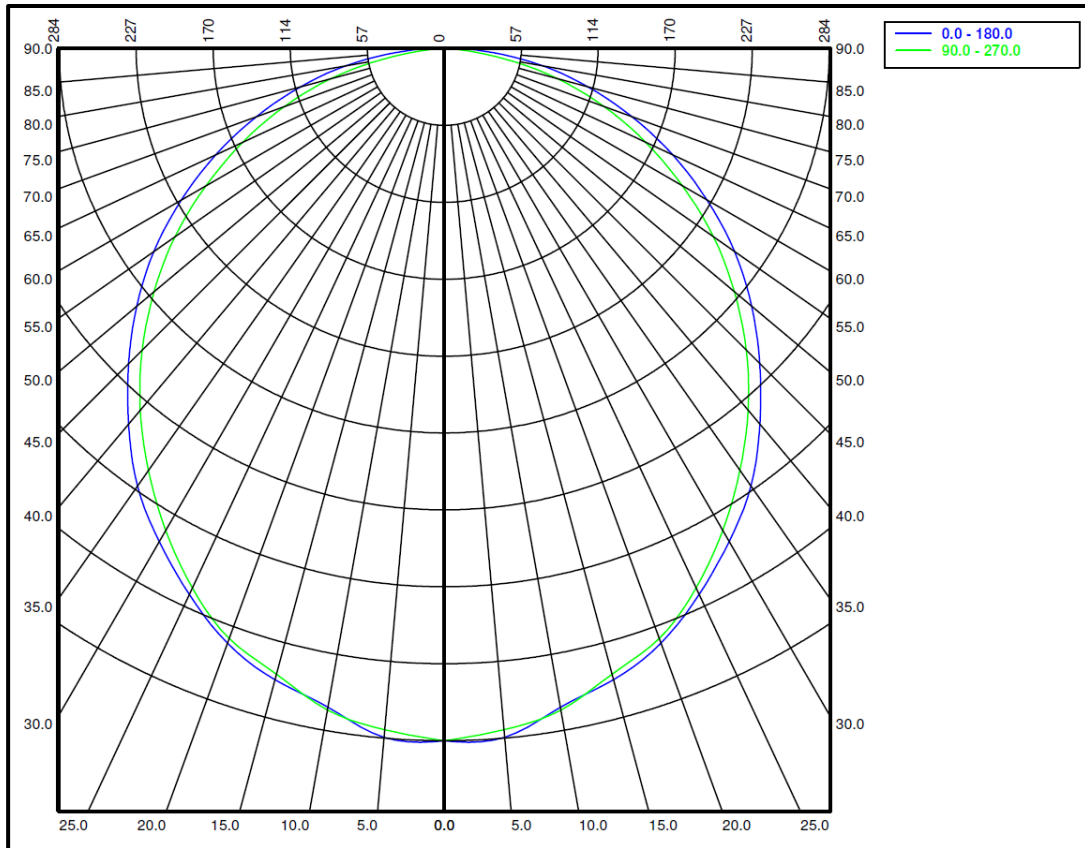
Image may differ slightly from actual unit

Summary of Results

System Power:	14.6W
Total Luminaire Output:	1405 Lumens
Luminaire Efficacy:	96 lm/W
Max Candela:	511.13 Candela

Calculated results may not be representative of field performance
Ballast factors have not been applied

Polar Plot



Zonal Lumen Summary

Zone	Lumens	% Fixture	Zone	Lumens	% Fixture
0-10	48.02	3.4%	90-100	0	0.0%
10-20	135.93	9.7%	100-110	0	0.0%
20-30	203.61	14.5%	110-120	0	0.0%
30-40	242.25	17.2%	120-130	0	0.0%
40-50	248.7	17.7%	130-140	0	0.0%
50-60	224.16	16.0%	140-150	0	0.0%
60-70	172.59	12.3%	150-160	0	0.0%
70-80	101.9	7.3%	160-170	0	0.0%
80-90	27.74	2.0%	170-180	0	0.0%
0-90	1404.9	100.0%	0-180	1404.9	100.0%

Candela Distribution
Horizontal Angle (Degrees)

	0	22.5	45	67.5	90	112.5	135	157.5	180	202.5	225	247.5	270	292.5	315	337.5
0	511	511	511	511	511	511	511	511	511	511	511	511	511	511	511	511
5	511	508	504	503	505	503	504	508	511	508	504	503	505	503	504	508
10	494	499	499	495	496	495	499	499	494	499	499	495	496	495	499	499
15	483	483	482	480	478	480	482	483	483	483	482	480	478	480	482	483
20	467	465	463	461	464	461	463	465	467	465	463	461	464	461	463	465
25	445	445	443	439	440	439	443	445	445	445	443	439	440	439	443	445
30	420	419	416	413	411	413	416	419	420	419	416	413	411	413	416	419
35	394	392	386	382	380	382	386	392	394	392	386	382	380	382	386	392
40	362	361	356	352	349	352	356	361	362	361	356	352	349	352	356	361
45	329	327	322	317	315	317	322	327	329	327	322	317	315	317	322	327
50	296	294	287	280	279	280	287	294	296	294	287	280	279	280	287	294
55	262	257	250	245	243	245	250	257	262	257	250	245	243	245	250	257
60	224	219	213	206	203	206	213	219	224	219	213	206	203	206	213	219
65	186	182	174	167	164	167	174	182	186	182	174	167	164	167	174	182
70	148	142	134	128	126	128	134	142	148	142	134	128	126	128	134	142
75	110	104	96	88	87	88	96	104	110	104	96	88	87	88	96	104
80	74	66	56	48	46	48	56	66	74	66	56	48	46	48	56	66
85	36	27	17	13	13	13	17	27	36	27	17	13	13	13	17	27
90	8	3	2	3	3	3	2	3	8	3	2	3	3	3	2	3

Average Luminance (cd/m²)
Horizontal Angle (Degrees)

ANGLES	0-Deg	45-Deg	90-Deg
0	8557	8557	8557
45	7786	7611	7452
55	7626	7297	7074
65	7359	6873	6495
75	7112	6172	5615
85	6924	3287	2410

Coefficients of Utilization – Zonal Cavity Method

Effective Floor Cavity Reflectance 20%																		
RC	80				70				50			30			10			0
RW	70	50	30	10	70	50	30	10	50	30	10	50	30	10	50	30	10	0
RCR	Values are in Lumens delivered to the Task Plane																	
0	1672	1672	1672	1672	1630	1630	1630	1630	1559	1559	1559	1489	1489	1489	1433	1433	1433	1405
1	1531	1461	1391	1349	1489	1433	1377	1321	1363	1321	1278	1307	1278	1236	1264	1236	1208	1166
2	1391	1264	1166	1096	1349	1236	1152	1082	1194	1124	1054	1152	1082	1026	1110	1054	1012	969
3	1264	1110	997	913	1222	1096	983	899	1054	955	885	1012	927	871	969	913	857	815
4	1152	983	857	773	1124	969	857	759	927	829	745	899	815	745	871	787	731	702
5	1068	885	759	660	1040	871	745	660	829	731	646	815	716	646	787	702	632	604
6	983	801	674	576	955	787	660	576	759	646	576	731	632	562	702	618	562	534
7	913	716	590	506	885	702	590	506	688	576	506	660	576	506	646	562	492	464
8	843	660	534	450	829	646	534	450	632	520	450	604	520	450	590	506	450	421
9	787	604	492	407	773	590	478	407	576	478	407	562	464	407	548	464	407	379
10	745	562	450	365	731	548	450	365	534	436	365	520	436	365	506	421	365	337

