

## **Indoor Distribution Test Report**

### **Picasso Lighting Industries, LLC**

46 Sellers St.  
Kearny, NJ 07032

#### **Photopia Photometric Analysis & Optical Design**

#### **Catalog Number**

**BEC-30-DR6-30-80-FW**

(White Housing – Direct – Frosted White 1” Drop Lens)

Test Number

**IES-P00113**

Test Date

2017-05-22

The results contained in this report pertain only to the tested sample.  
This report shall not be reproduced, except in full, without written approval of Picasso Lighting Industries, LLC.

<b>Luminaire Description:</b>	White, Sheet Metal Housing, Direct w/ Frosted White 1" Drop Lens
<b>Lamp:</b>	LED (3000K, 80+ CRI)
<b>Installation:</b>	Surface or Recess Mounted
<b>Luminous Length:</b>	29.00 in
<b>Luminous Width:</b>	29.00 in
<b>Luminous Height:</b>	1.00 in

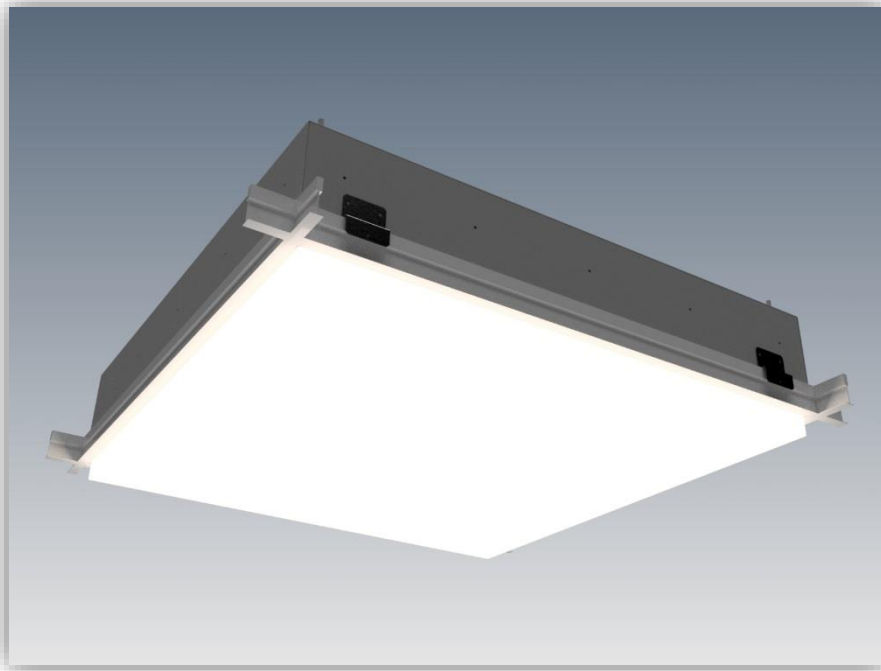


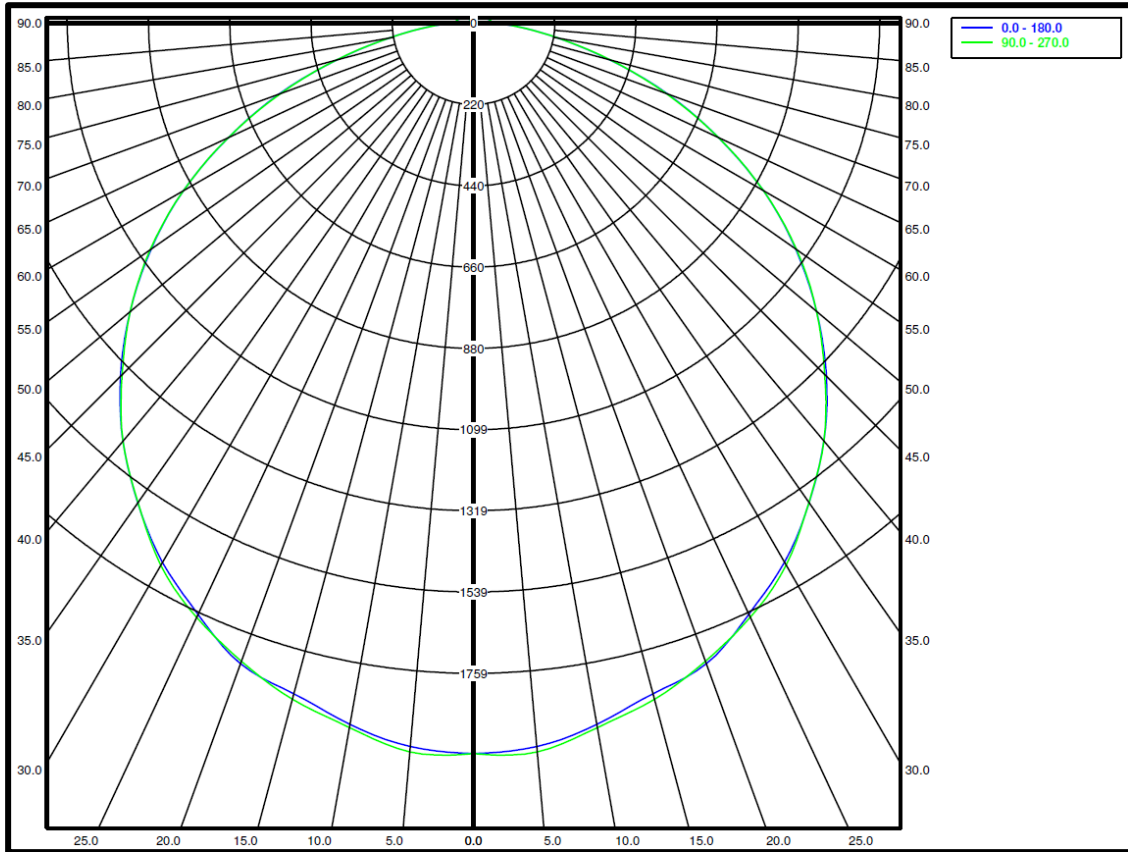
Image may differ slightly from actual unit

#### **Summary of Results**

<b>System Power:</b>	58.0W
<b>Total Luminaire Output:</b>	6006 Lumens
<b>Luminaire Efficacy:</b>	104 lm/W
<b>Max Candela:</b>	1978.94 Candela

Calculated results may not be representative of field performance  
Ballast factors have not been applied

**Polar Plot**



**Zonal Lumen Summary**

Zone	Lumens	% Fixture	Zone	Lumens	% Fixture
0-10	186.42	3.1%	90-100	60.79	1.0%
10-20	533.75	8.9%	100-110	46.31	0.8%
20-30	816.57	13.6%	110-120	32.97	0.5%
30-40	993.9	16.5%	120-130	19.98	0.3%
40-50	1042.94	17.4%	130-140	9.08	0.2%
50-60	956.05	15.9%	140-150	2.14	0.0%
60-70	731.43	12.2%	150-160	0.06	0.0%
70-80	416.93	6.9%	160-170	0	0.0%
80-90	157.01	2.6%	170-180	0	0.0%
0-90	5835	97.1%	0-180	6006.33	100.0%

### Candela Distribution

#### Horizontal Angle (Degrees)

	0	22.5	45	67.5	90	112.5	135	157.5	180	202.5	225	247.5	270	292.5	315	337.5
0	1976	1976	1976	1976	1976	1976	1976	1976	1976	1976	1976	1976	1976	1976	1976	1976
5	1965	1961	1961	1967	1979	1967	1961	1961	1965	1961	1961	1967	1979	1967	1961	1961
10	1926	1929	1933	1923	1935	1923	1933	1929	1926	1929	1933	1923	1935	1923	1933	1929
15	1878	1891	1885	1890	1894	1890	1885	1891	1878	1891	1885	1890	1894	1890	1885	1891
20	1844	1846	1837	1839	1837	1839	1837	1846	1844	1846	1837	1839	1837	1839	1837	1846
25	1765	1773	1774	1766	1774	1766	1774	1773	1765	1773	1774	1766	1774	1766	1774	1773
30	1684	1688	1691	1689	1693	1689	1691	1688	1684	1688	1691	1689	1693	1689	1691	1688
35	1584	1589	1592	1587	1583	1587	1592	1589	1584	1589	1592	1587	1583	1587	1592	1589
40	1476	1480	1477	1473	1476	1473	1477	1480	1476	1480	1477	1473	1476	1473	1477	1480
45	1352	1354	1356	1350	1345	1350	1356	1354	1352	1354	1356	1350	1345	1350	1356	1354
50	1213	1217	1220	1219	1213	1219	1220	1217	1213	1217	1220	1219	1213	1219	1220	1217
55	1065	1071	1078	1073	1068	1073	1078	1071	1065	1071	1078	1073	1068	1073	1078	1071
60	907	910	915	911	907	911	915	910	907	910	915	911	907	911	915	910
65	733	741	747	740	733	740	747	741	733	741	747	740	733	740	747	741
70	560	564	569	564	554	564	569	564	560	564	569	564	554	564	569	564
75	382	388	394	389	384	389	394	388	382	388	394	389	384	389	394	388
80	232	239	245	242	233	242	245	239	232	239	245	242	233	242	245	239
85	129	134	140	135	127	135	140	134	129	134	140	135	127	135	140	134
90	63	69	74	68	63	68	74	69	63	69	74	68	63	68	74	69
95	48	53	58	53	48	53	58	53	48	53	58	53	48	53	58	53
100	45	49	52	49	46	49	52	49	45	49	52	49	46	49	52	49
105	41	43	47	43	42	43	47	43	41	43	47	43	42	43	47	43
110	38	38	41	38	37	38	41	38	38	38	41	38	37	38	41	38
115	33	33	35	32	34	32	35	33	33	33	35	32	34	32	35	33
120	28	27	28	27	29	27	28	27	28	27	28	27	29	27	28	27
125	24	21	22	21	24	21	22	21	24	21	22	21	24	21	22	21
130	19	17	15	16	19	16	15	17	19	17	15	16	19	16	15	17
135	14	12	8	12	14	12	8	12	14	12	8	12	14	12	8	12
140	10	7	3	7	10	7	3	7	10	7	3	7	10	7	3	7
145	5	3	0	3	5	3	0	3	5	3	0	3	5	3	0	3
150	1	0	0	0	1	0	0	0	1	0	0	0	1	0	0	0
155	0	0	0	0	0	0	0	0	0	0	0	0	0	0	0	0
160	0	0	0	0	0	0	0	0	0	0	0	0	0	0	0	0
165	0	0	0	0	0	0	0	0	0	0	0	0	0	0	0	0
170	0	0	0	0	0	0	0	0	0	0	0	0	0	0	0	0
175	0	0	0	0	0	0	0	0	0	0	0	0	0	0	0	0
180	0	0	0	0	0	0	0	0	0	0	0	0	0	0	0	0

### Average Luminance (cd/m²)

#### Horizontal Angle (Degrees)

ANGLES	0-Deg	45-Deg	90-Deg
0	3642	3642	3642
45	3402	3367	3386
55	3259	3235	3268
65	2972	2948	2972
75	2406	2374	2422
85	1949	1901	1925

**Coefficients of Utilization – Zonal Cavity Method**

Effective Floor Cavity Reflectance 20%																		
RC	80				70				50			30			10			0
RW	70	50	30	10	70	50	30	10	50	30	10	50	30	10	50	30	10	0
RCR	Values are in Lumens delivered to the Task Plane																	
0	7087	7087	7087	7087	6907	6907	6907	6907	6607	6607	6607	6247	6247	6247	5946	5946	5946	5826
1	6487	6187	5886	5646	6307	6006	5766	5586	5706	5526	5346	5466	5286	5165	5226	5105	4985	4805
2	5886	5346	4925	4565	5706	5226	4865	4505	4985	4685	4385	4745	4505	4264	4565	4325	4144	4024
3	5346	4685	4204	3784	5165	4565	4144	3784	4385	3964	3664	4204	3844	3604	4024	3724	3484	3364
4	4865	4144	3604	3183	4745	4084	3544	3183	3904	3484	3123	3724	3364	3063	3604	3243	3003	2883
5	4505	3724	3183	2763	4325	3604	3123	2703	3484	3003	2703	3364	2943	2643	3183	2883	2583	2463
6	4144	3303	2763	2403	4024	3243	2763	2403	3123	2703	2342	3003	2643	2282	2883	2583	2282	2162
7	3844	3003	2463	2102	3724	2943	2463	2102	2823	2403	2042	2763	2342	2042	2643	2282	2042	1922
8	3544	2763	2222	1862	3484	2703	2222	1862	2583	2162	1862	2523	2102	1802	2403	2042	1802	1682
9	3303	2523	2042	1682	3243	2463	1982	1682	2403	1982	1682	2342	1922	1622	2222	1862	1622	1502
10	3123	2342	1862	1502	3063	2282	1802	1502	2222	1802	1502	2162	1742	1502	2102	1742	1502	1381

