



**PICASSO LIGHTING INDUSTRIES, LLC**  
46 Sellers Street, Kearny, NJ 07032  
201.246.8188

## **Indoor Distribution Test Report**

### **Picasso Lighting Industries, LLC**

46 Sellers St.  
Kearny, NJ 07032

#### **Photopia Photometric Analysis & Optical Design**

#### **Catalog Number**

**BEC-30-DR5-30-80-FW**

(White Housing – Direct – Frosted White 1” Drop Lens)

Test Number

**IES-P00112**

Test Date

2017-05-22

The results contained in this report pertain only to the tested sample.  
This report shall not be reproduced, except in full, without written approval of Picasso Lighting Industries, LLC.

<b>Luminaire Description:</b>	White, Sheet Metal Housing, Direct w/ Frosted White 1" Drop Lens
<b>Lamp:</b>	LED (3000K, 80+ CRI)
<b>Installation:</b>	Surface or Recess Mounted
<b>Luminous Length:</b>	29.00 in
<b>Luminous Width:</b>	29.00 in
<b>Luminous Height:</b>	1.00 in

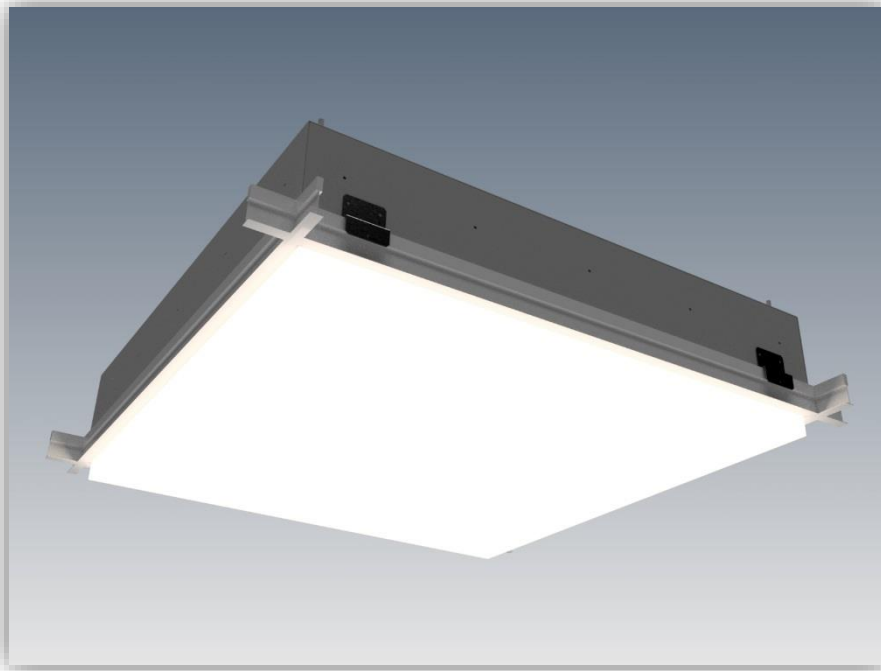


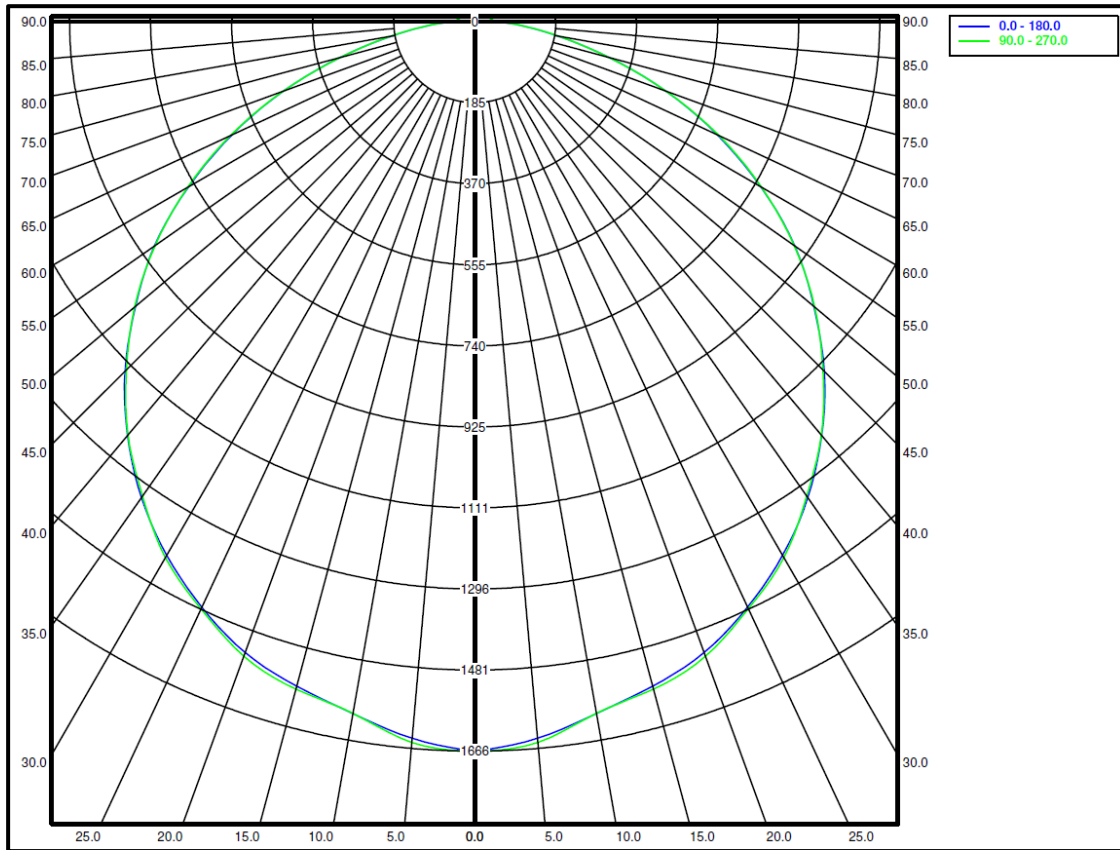
Image may differ slightly from actual unit

#### **Summary of Results**

<b>System Power:</b>	48.0W
<b>Total Luminaire Output:</b>	5014 Lumens
<b>Luminaire Efficacy:</b>	104 lm/W
<b>Max Candela:</b>	1665.86 Candela

Calculated results may not be representative of field performance  
Ballast factors have not been applied

**Polar Plot**



**Zonal Lumen Summary**

Zone	Lumens	% Fixture	Zone	Lumens	% Fixture
0-10	155.82	3.1%	90-100	50.43	1.0%
10-20	444.84	8.9%	100-110	38.42	0.8%
20-30	681.91	13.6%	110-120	27.63	0.6%
30-40	829.61	16.5%	120-130	16.75	0.3%
40-50	871.02	17.4%	130-140	7.57	0.2%
50-60	797.74	15.9%	140-150	1.75	0.0%
60-70	610.89	12.2%	150-160	0.05	0.0%
70-80	348.12	6.9%	160-170	0	0.0%
80-90	131.08	2.6%	170-180	0	0.0%
0-90	4871.03	97.2%	0-180	5013.63	100.0%

### Candela Distribution

#### Horizontal Angle (Degrees)

	0	22.5	45	67.5	90	112.5	135	157.5	180	202.5	225	247.5	270	292.5	315	337.5
0	1666	1666	1666	1666	1666	1666	1666	1666	1666	1666	1666	1666	1666	1666	1666	1666
5	1643	1649	1641	1633	1652	1633	1641	1649	1643	1649	1641	1633	1652	1633	1641	1649
10	1604	1611	1612	1602	1604	1602	1612	1611	1604	1611	1612	1602	1604	1602	1612	1611
15	1571	1575	1574	1569	1578	1569	1574	1575	1571	1575	1574	1569	1578	1569	1574	1575
20	1533	1537	1532	1535	1542	1535	1532	1537	1533	1537	1532	1535	1542	1535	1532	1537
25	1476	1480	1483	1478	1480	1478	1483	1480	1476	1480	1483	1478	1480	1478	1483	1480
30	1407	1408	1411	1409	1413	1409	1411	1408	1407	1408	1411	1409	1413	1409	1411	1408
35	1327	1325	1329	1322	1323	1322	1329	1325	1327	1325	1329	1322	1323	1322	1329	1325
40	1234	1232	1237	1232	1232	1232	1237	1232	1234	1232	1237	1232	1232	1232	1237	1232
45	1130	1127	1133	1130	1125	1130	1133	1127	1130	1127	1133	1130	1125	1130	1133	1127
50	1012	1016	1019	1016	1014	1016	1019	1016	1012	1016	1019	1016	1014	1016	1019	1016
55	894	892	897	894	891	894	897	892	894	892	897	894	891	894	897	892
60	755	761	765	760	757	760	765	761	755	761	765	760	757	760	765	761
65	612	619	622	618	616	618	622	619	612	619	622	618	616	618	622	619
70	466	472	475	470	466	470	475	472	466	472	475	470	466	470	475	472
75	319	325	330	324	318	324	330	325	319	325	330	324	318	324	330	325
80	194	200	204	201	195	201	204	200	194	200	204	201	195	201	204	200
85	107	112	117	113	107	113	117	112	107	112	117	113	107	113	117	112
90	53	56	60	57	52	57	60	56	53	56	60	57	52	57	60	56
95	40	44	48	44	41	44	48	44	40	44	48	44	41	44	48	44
100	37	41	43	40	37	40	43	41	37	41	43	40	37	40	43	41
105	34	36	40	36	35	36	40	36	34	36	40	36	35	36	40	36
110	31	32	34	32	31	32	34	32	31	32	34	32	31	32	34	32
115	28	28	29	27	28	27	29	28	28	28	29	27	28	27	29	28
120	24	22	24	23	24	23	24	22	24	22	24	23	24	23	24	22
125	21	18	18	18	21	18	18	18	21	18	18	18	21	18	18	18
130	16	14	12	14	16	14	12	14	16	14	12	14	16	14	12	14
135	12	10	7	10	12	10	7	10	12	10	7	10	12	10	7	10
140	8	6	3	6	8	6	3	6	8	6	3	6	8	6	3	6
145	4	3	0	3	4	3	0	3	4	3	0	3	4	3	0	3
150	1	0	0	0	1	0	0	0	1	0	0	0	1	0	0	0
155	0	0	0	0	0	0	0	0	0	0	0	0	0	0	0	0
160	0	0	0	0	0	0	0	0	0	0	0	0	0	0	0	0
165	0	0	0	0	0	0	0	0	0	0	0	0	0	0	0	0
170	0	0	0	0	0	0	0	0	0	0	0	0	0	0	0	0
175	0	0	0	0	0	0	0	0	0	0	0	0	0	0	0	0
180	0	0	0	0	0	0	0	0	0	0	0	0	0	0	0	0

### Average Luminance (cd/m<sup>2</sup>)

#### Horizontal Angle (Degrees)

ANGLES	0-Deg	45-Deg	90-Deg
0	3070	3070	3070
45	2844	2813	2833
55	2734	2693	2726
65	2483	2454	2499
75	2013	1986	2006
85	1620	1584	1627

**Coefficients of Utilization – Zonal Cavity Method**

Effective Floor Cavity Reflectance 20%																		
RC	80				70				50			30			10			0
RW	70	50	30	10	70	50	30	10	50	30	10	50	30	10	50	30	10	0
RCR	Values are in Lumens delivered to the Task Plane																	
0	5916	5916	5916	5916	5766	5766	5766	5766	5515	5515	5515	5214	5214	5214	4963	4963	4963	4863
1	5415	5164	4913	4713	5264	5014	4813	4663	4763	4613	4462	4562	4412	4312	4362	4262	4161	4011
2	4913	4462	4111	3810	4763	4362	4061	3760	4161	3911	3660	3961	3760	3560	3810	3610	3459	3359
3	4462	3911	3510	3159	4312	3810	3459	3159	3660	3309	3058	3510	3209	3008	3359	3108	2908	2808
4	4061	3459	3008	2657	3961	3409	2958	2657	3259	2908	2607	3108	2808	2557	3008	2707	2507	2407
5	3760	3108	2657	2306	3610	3008	2607	2256	2908	2507	2256	2808	2457	2206	2657	2407	2156	2056
6	3459	2757	2306	2005	3359	2707	2306	2005	2607	2256	1955	2507	2206	1905	2407	2156	1905	1805
7	3209	2507	2056	1755	3108	2457	2056	1755	2356	2005	1705	2306	1955	1705	2206	1905	1705	1604
8	2958	2306	1855	1554	2908	2256	1855	1554	2156	1805	1554	2106	1755	1504	2005	1705	1504	1404
9	2757	2106	1705	1404	2707	2056	1654	1404	2005	1654	1404	1955	1604	1354	1855	1554	1354	1253
10	2607	1955	1554	1253	2557	1905	1504	1253	1855	1504	1253	1805	1454	1253	1755	1454	1253	1153

