

Indoor Distribution Test Report

Picasso Lighting Industries, LLC

46 Sellers St.
Kearny, NJ 07032

Photopia Photometric Analysis & Optical Design

Catalog Number

BEC-30-DR4-30-80-FW

(White Housing – Direct – Frosted White 1” Drop Lens)

Test Number

IES-P00111

Test Date

2017-05-22

The results contained in this report pertain only to the tested sample.
This report shall not be reproduced, except in full, without written approval of Picasso Lighting Industries, LLC.

Luminaire Description:	White, Sheet Metal Housing, Direct w/ Frosted White 1" Drop Lens
Lamp:	LED (3000K, 80+ CRI)
Installation:	Surface or Recess Mounted
Luminous Length:	29.00 in
Luminous Width:	29.00 in
Luminous Height:	1.00 in

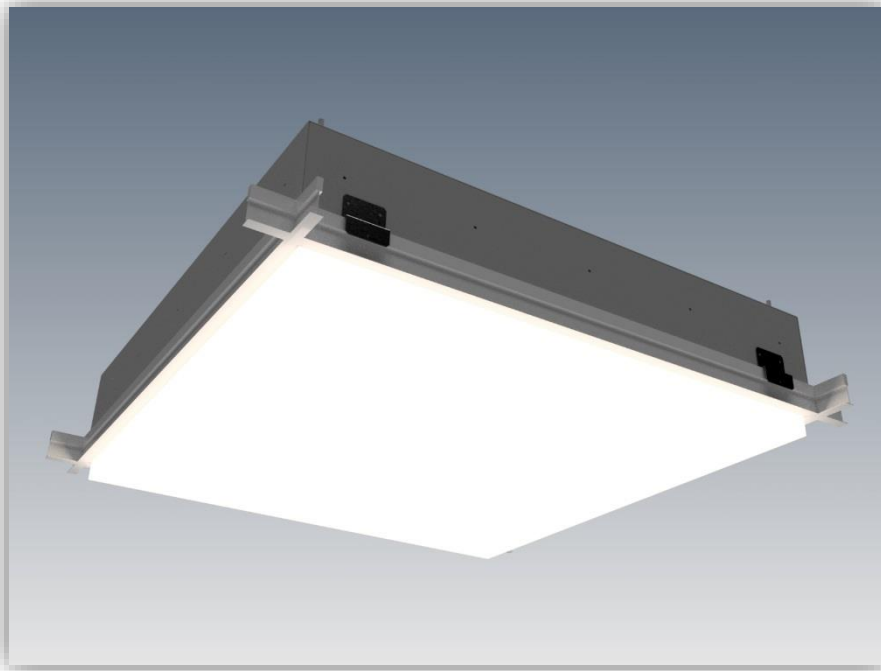


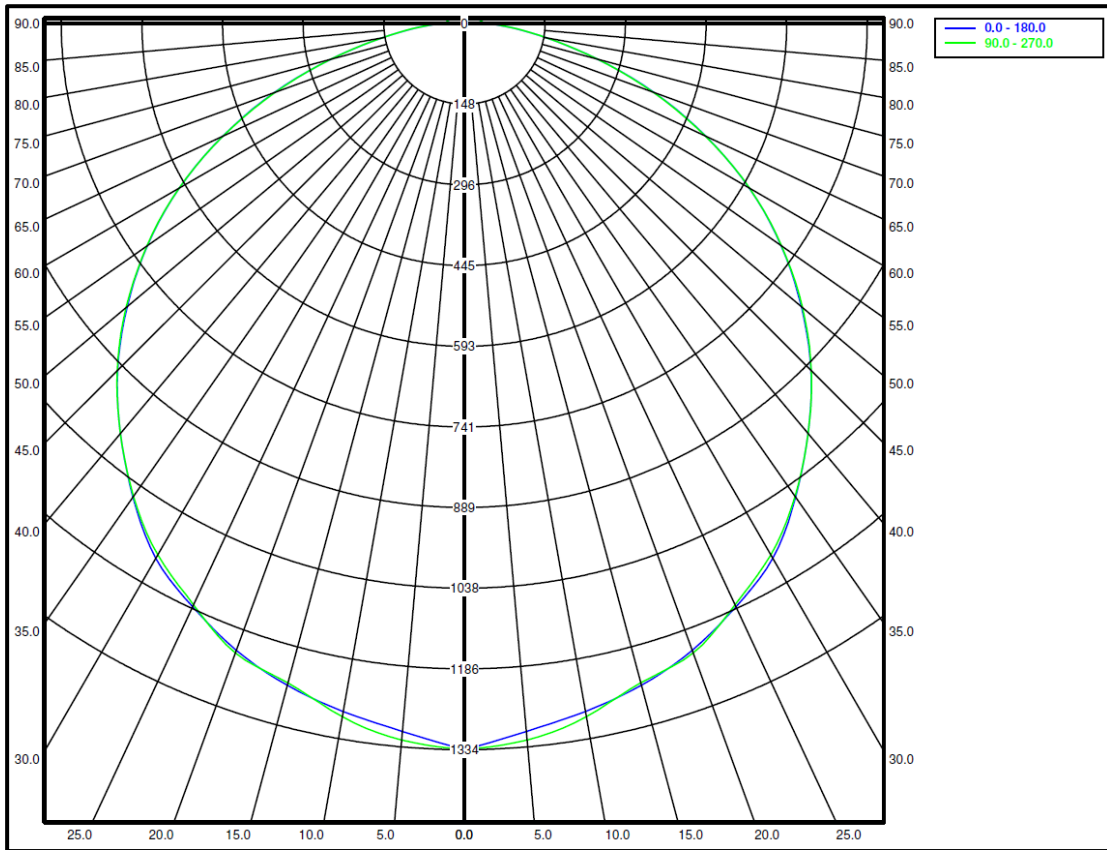
Image may differ slightly from actual unit

Summary of Results

System Power:	38.3W
Total Luminaire Output:	4010 Lumens
Luminaire Efficacy:	105 lm/W
Max Candela:	1334.23 Candela

Calculated results may not be representative of field performance
Ballast factors have not been applied

Polar Plot



Zonal Lumen Summary

Zone	Lumens	% Fixture	Zone	Lumens	% Fixture
0-10	124.44	3.1%	90-100	40.52	1.0%
10-20	356	8.9%	100-110	30.93	0.8%
20-30	545.52	13.6%	110-120	22.01	0.5%
30-40	664.23	16.6%	120-130	13.29	0.3%
40-50	696.47	17.4%	130-140	6.04	0.2%
50-60	638.32	15.9%	140-150	1.41	0.0%
60-70	488.45	12.2%	150-160	0.04	0.0%
70-80	277.95	6.9%	160-170	0	0.0%
80-90	104.79	2.6%	170-180	0	0.0%
0-90	3896.17	97.2%	0-180	4010.41	100.0%

Candela Distribution

Horizontal Angle (Degrees)

	0	22.5	45	67.5	90	112.5	135	157.5	180	202.5	225	247.5	270	292.5	315	337.5
0	1334	1334	1334	1334	1334	1334	1334	1334	1334	1334	1334	1334	1334	1334	1334	1334
5	1306	1305	1315	1305	1322	1305	1315	1305	1306	1305	1315	1305	1322	1305	1315	1305
10	1284	1280	1288	1285	1294	1285	1288	1280	1284	1280	1288	1285	1294	1285	1288	1280
15	1259	1260	1258	1263	1254	1263	1258	1260	1259	1260	1258	1263	1254	1263	1258	1260
20	1226	1227	1230	1228	1231	1228	1230	1227	1226	1227	1230	1228	1231	1228	1230	1227
25	1183	1187	1183	1184	1179	1184	1183	1187	1183	1187	1183	1184	1179	1184	1183	1187
30	1135	1126	1128	1127	1128	1127	1128	1126	1135	1126	1128	1127	1128	1127	1128	1126
35	1062	1061	1063	1062	1061	1062	1063	1061	1062	1061	1063	1062	1061	1062	1063	1061
40	984	984	990	988	984	988	990	984	984	984	990	988	984	988	990	984
45	902	902	905	902	903	902	905	902	902	902	905	902	903	902	905	902
50	809	812	816	813	812	813	816	812	809	812	816	813	812	813	816	812
55	712	715	717	715	713	715	717	715	712	715	717	715	713	715	717	715
60	606	610	613	608	607	608	613	610	606	610	613	608	607	608	613	610
65	490	494	497	495	489	495	497	494	490	494	497	495	489	495	497	494
70	372	375	379	375	371	375	379	375	372	375	379	375	371	375	379	375
75	254	260	263	260	255	260	263	260	254	260	263	260	255	260	263	260
80	155	160	163	161	155	161	163	160	155	160	163	161	155	161	163	160
85	85	91	93	90	86	90	93	91	85	91	93	90	86	90	93	91
90	42	45	49	45	42	45	49	45	42	45	49	45	42	45	49	45
95	33	35	38	35	33	35	38	35	33	35	38	35	33	35	38	35
100	30	32	35	33	30	33	35	32	30	32	35	33	30	33	35	32
105	28	29	31	29	28	29	31	29	28	29	31	29	28	29	31	29
110	25	25	28	25	25	25	28	25	25	25	28	25	25	25	28	25
115	22	21	23	22	23	22	23	21	22	21	23	22	23	22	23	21
120	19	18	18	18	19	18	18	18	19	18	18	18	19	18	18	18
125	16	14	15	14	16	14	15	14	16	14	15	14	16	14	15	14
130	13	11	10	11	13	11	10	11	13	11	10	11	13	11	10	11
135	10	8	6	8	10	8	6	8	10	8	6	8	10	8	6	8
140	6	5	2	5	7	5	2	5	6	5	2	5	7	5	2	5
145	3	2	0	2	3	2	0	2	3	2	0	2	3	2	0	2
150	1	0	0	0	1	0	0	0	1	0	0	0	1	0	0	0
155	0	0	0	0	0	0	0	0	0	0	0	0	0	0	0	0
160	0	0	0	0	0	0	0	0	0	0	0	0	0	0	0	0
165	0	0	0	0	0	0	0	0	0	0	0	0	0	0	0	0
170	0	0	0	0	0	0	0	0	0	0	0	0	0	0	0	0
175	0	0	0	0	0	0	0	0	0	0	0	0	0	0	0	0
180	0	0	0	0	0	0	0	0	0	0	0	0	0	0	0	0

Average Luminance (cd/m²)

Horizontal Angle (Degrees)

ANGLES	0-Deg	45-Deg	90-Deg
0	2459	2459	2459
45	2270	2246	2273
55	2177	2153	2180
65	1989	1961	1985
75	1601	1582	1604
85	1285	1263	1308

Coefficients of Utilization – Zonal Cavity Method

Effective Floor Cavity Reflectance 20%																		
RC	80				70				50			30			10			0
RW	70	50	30	10	70	50	30	10	50	30	10	50	30	10	50	30	10	0
RCR	Values are in Lumens delivered to the Task Plane																	
0	4732	4732	4732	4732	4612	4612	4612	4612	4411	4411	4411	4171	4171	4171	3970	3970	3970	3890
1	4331	4131	3930	3770	4211	4010	3850	3730	3810	3690	3569	3649	3529	3449	3489	3409	3329	3208
2	3930	3569	3289	3048	3810	3489	3248	3008	3329	3128	2928	3168	3008	2847	3048	2887	2767	2687
3	3569	3128	2807	2527	3449	3048	2767	2527	2928	2647	2446	2807	2567	2406	2687	2486	2326	2246
4	3248	2767	2406	2126	3168	2727	2366	2126	2607	2326	2085	2486	2246	2045	2406	2166	2005	1925
5	3008	2486	2126	1845	2887	2406	2085	1805	2326	2005	1805	2246	1965	1765	2126	1925	1724	1644
6	2767	2206	1845	1604	2687	2166	1845	1604	2085	1805	1564	2005	1765	1524	1925	1724	1524	1444
7	2567	2005	1644	1404	2486	1965	1644	1404	1885	1604	1364	1845	1564	1364	1765	1524	1364	1283
8	2366	1845	1484	1243	2326	1805	1484	1243	1724	1444	1243	1684	1404	1203	1644	1364	1203	1123
9	2206	1684	1364	1123	2166	1644	1323	1123	1604	1323	1123	1564	1283	1083	1484	1243	1083	1003
10	2085	1564	1243	1003	2045	1524	1203	1003	1484	1203	1003	1444	1163	1003	1404	1163	1003	922

