

Indoor Distribution Test Report

Picasso Lighting Industries, LLC

46 Sellers St.
Kearny, NJ 07032

Photopia Photometric Analysis & Optical Design

Catalog Number

BEC-30-DR3-30-80-FW

(White Housing – Direct – Frosted White 1” Drop Lens)

Test Number

IES-P00110

Test Date

2017-05-22

The results contained in this report pertain only to the tested sample.
This report shall not be reproduced, except in full, without written approval of Picasso Lighting Industries, LLC.

Luminaire Description:	White, Sheet Metal Housing, Direct w/ Frosted White 1" Drop Lens
Lamp:	LED (3000K, 80+ CRI)
Installation:	Surface or Recess Mounted
Luminous Length:	29.00 in
Luminous Width:	29.00 in
Luminous Height:	1.00 in

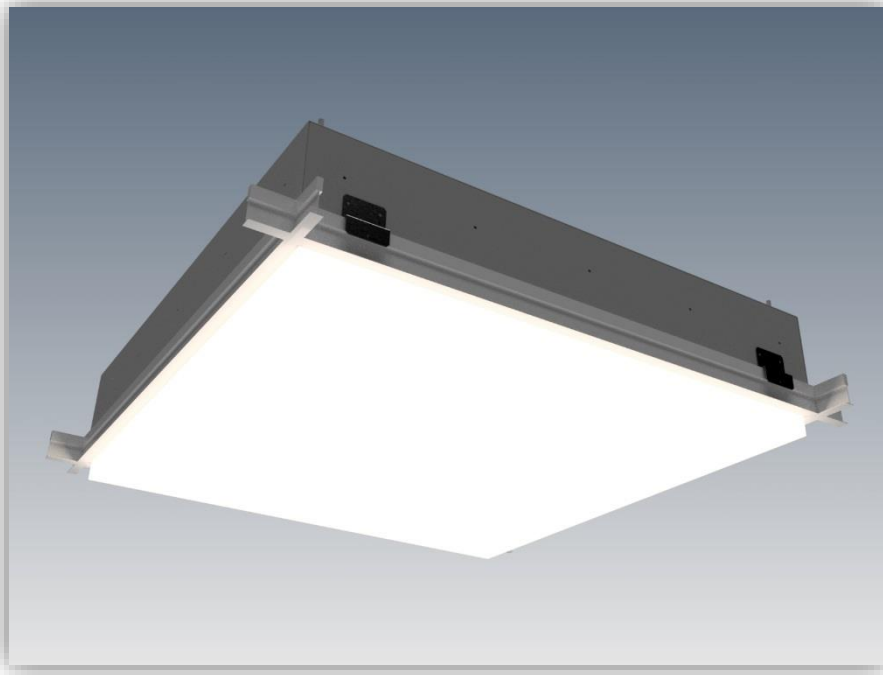


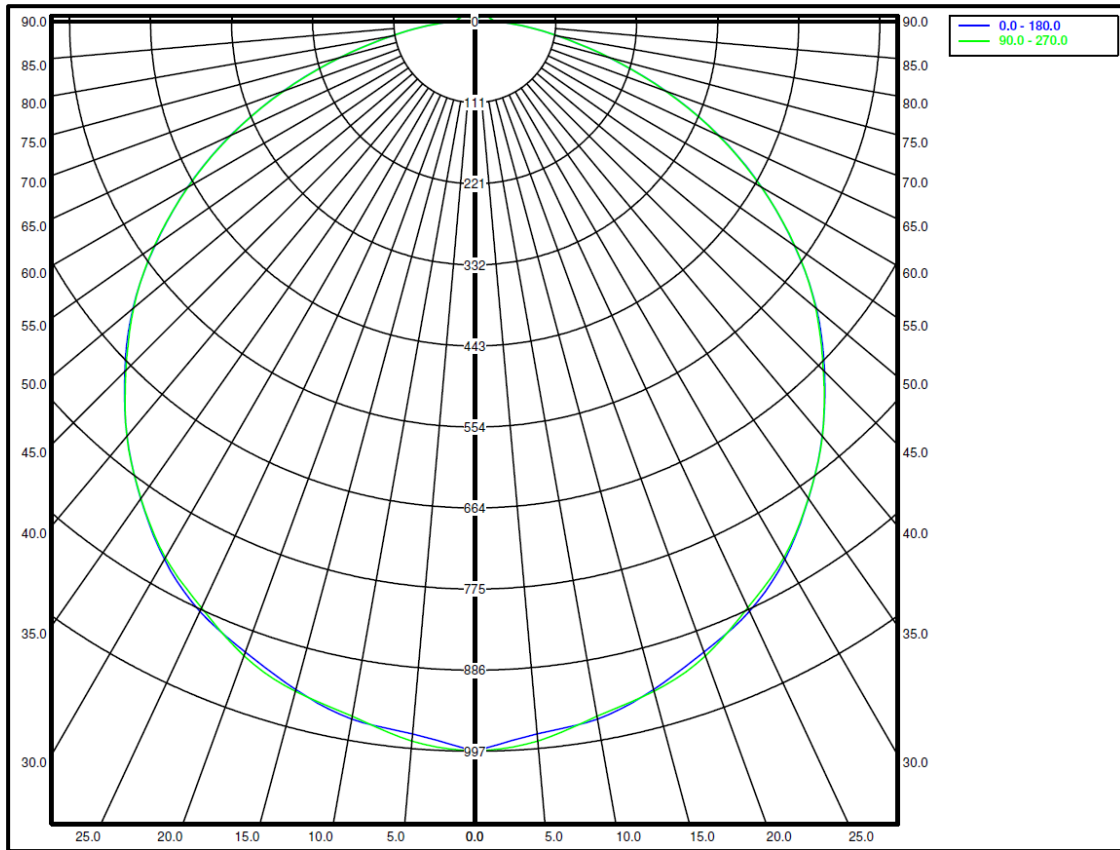
Image may differ slightly from actual unit

Summary of Results

System Power:	29.0W
Total Luminaire Output:	3008 Lumens
Luminaire Efficacy:	104 lm/W
Max Candela:	996.63 Candela

Calculated results may not be representative of field performance
Ballast factors have not been applied

Polar Plot



Zonal Lumen Summary

Zone	Lumens	% Fixture	Zone	Lumens	% Fixture
0-10	93.55	3.1%	90-100	30.29	1.0%
10-20	267	8.9%	100-110	23.17	0.8%
20-30	409.06	13.6%	110-120	16.51	0.5%
30-40	497.98	16.6%	120-130	10	0.3%
40-50	522.4	17.4%	130-140	4.55	0.2%
50-60	478.84	15.9%	140-150	1.05	0.0%
60-70	366.02	12.2%	150-160	0.03	0.0%
70-80	208.68	6.9%	160-170	0	0.0%
80-90	78.8	2.6%	170-180	0	0.0%
0-90	2922.33	97.2%	0-180	3007.93	100.0%

Candela Distribution

Horizontal Angle (Degrees)

	0	22.5	45	67.5	90	112.5	135	157.5	180	202.5	225	247.5	270	292.5	315	337.5
0	997	997	997	997	997	997	997	997	997	997	997	997	997	997	997	997
5	977	986	989	990	987	990	989	986	977	986	989	990	987	990	989	986
10	967	966	965	968	964	968	965	966	967	966	965	968	964	968	965	966
15	945	947	943	943	947	943	943	947	945	947	943	943	947	943	943	947
20	917	922	918	921	922	921	918	922	917	922	918	921	922	921	918	922
25	889	889	888	888	884	888	888	889	889	889	888	888	884	888	888	889
30	848	846	848	845	845	845	848	846	848	846	848	845	845	845	848	846
35	796	797	796	796	795	796	796	797	796	797	796	796	795	796	796	797
40	739	738	739	739	739	739	739	738	739	738	739	739	739	739	739	738
45	676	677	680	677	674	677	680	677	676	677	680	677	674	677	680	677
50	610	610	612	611	608	611	612	610	610	610	612	611	608	611	612	610
55	533	537	538	537	535	537	538	537	533	537	538	537	535	537	538	537
60	454	457	458	457	452	457	458	457	454	457	458	457	452	457	458	457
65	368	370	373	370	367	370	373	370	368	370	373	370	367	370	373	370
70	279	283	284	282	278	282	284	283	279	283	284	282	278	282	284	283
75	191	195	198	195	191	195	198	195	191	195	198	195	191	195	198	195
80	117	121	123	120	117	120	123	121	117	121	123	120	117	120	123	121
85	65	67	71	68	65	68	71	67	65	67	71	68	65	68	71	67
90	31	34	36	34	31	34	36	34	31	34	36	34	31	34	36	34
95	24	26	29	27	25	27	29	26	24	26	29	27	25	27	29	26
100	22	24	26	24	22	24	26	24	22	24	26	24	22	24	26	24
105	21	22	23	22	21	22	23	22	21	22	23	22	21	22	23	22
110	19	19	20	19	19	19	20	19	19	19	20	19	19	19	20	19
115	17	16	18	16	17	16	18	16	17	16	18	16	17	16	18	16
120	15	14	14	13	15	13	14	14	15	14	14	13	15	13	14	14
125	12	10	11	11	12	11	11	10	12	10	11	11	12	11	11	10
130	10	8	7	8	10	8	7	8	10	8	7	8	10	8	7	8
135	8	6	4	6	7	6	4	6	8	6	4	6	7	6	4	6
140	5	4	2	4	5	4	2	4	5	4	2	4	5	4	2	4
145	3	2	0	2	2	2	0	2	3	2	0	2	2	2	0	2
150	1	0	0	0	0	0	0	0	1	0	0	0	0	0	0	0
155	0	0	0	0	0	0	0	0	0	0	0	0	0	0	0	0
160	0	0	0	0	0	0	0	0	0	0	0	0	0	0	0	0
165	0	0	0	0	0	0	0	0	0	0	0	0	0	0	0	0
170	0	0	0	0	0	0	0	0	0	0	0	0	0	0	0	0
175	0	0	0	0	0	0	0	0	0	0	0	0	0	0	0	0
180	0	0	0	0	0	0	0	0	0	0	0	0	0	0	0	0

Average Luminance (cd/m²)

Horizontal Angle (Degrees)

ANGLES	0-Deg	45-Deg	90-Deg
0	1837	1837	1837
45	1702	1688	1697
55	1632	1615	1635
65	1495	1472	1490
75	1204	1190	1205
85	980	956	982

Coefficients of Utilization – Zonal Cavity Method

Effective Floor Cavity Reflectance 20%																		
RC	80				70				50			30			10			0
RW	70	50	30	10	70	50	30	10	50	30	10	50	30	10	50	30	10	0
RCR	Values are in Lumens delivered to the Task Plane																	
0	3549	3549	3549	3549	3459	3459	3459	3459	3309	3309	3309	3128	3128	3128	2978	2978	2978	2918
1	3249	3098	2948	2827	3158	3008	2888	2797	2858	2767	2677	2737	2647	2587	2617	2557	2497	2406
2	2948	2677	2467	2286	2858	2617	2436	2256	2497	2346	2196	2376	2256	2136	2286	2166	2075	2015
3	2677	2346	2106	1895	2587	2286	2075	1895	2196	1985	1835	2106	1925	1805	2015	1865	1745	1684
4	2436	2075	1805	1594	2376	2045	1775	1594	1955	1745	1564	1865	1684	1534	1805	1624	1504	1444
5	2256	1865	1594	1384	2166	1805	1564	1354	1745	1504	1354	1684	1474	1323	1594	1444	1293	1233
6	2075	1654	1384	1203	2015	1624	1384	1203	1564	1354	1173	1504	1323	1143	1444	1293	1143	1083
7	1925	1504	1233	1053	1865	1474	1233	1053	1414	1203	1023	1384	1173	1023	1323	1143	1023	963
8	1775	1384	1113	932	1745	1354	1113	932	1293	1083	932	1263	1053	902	1233	1023	902	842
9	1654	1263	1023	842	1624	1233	993	842	1203	993	842	1173	963	812	1113	932	812	752
10	1564	1173	932	752	1534	1143	902	752	1113	902	752	1083	872	752	1053	872	752	692

