



PICASSO LIGHTING INDUSTRIES, LLC
46 Sellers Street, Kearny, NJ 07032
201.246.8188

Indoor Distribution Test Report

Picasso Lighting Industries, LLC

46 Sellers St.
Kearny, NJ 07032

Photopia Photometric Analysis & Optical Design

Catalog Number
CV1-C-4-I7-30-80-MC-W
(White Housing – Indirect – Opal Lens)

Test Number

IES-P00030

Test Date

2017-06-09

The results contained in this report pertain only to the tested sample.
This report shall not be reproduced, except in full, without written approval of Picasso Lighting Industries, LLC.

Luminaire Description:	Extruded Aluminum Cover (LED Enclosure), Indirect w/ Opal Lens
Lamp:	LED (3000K, 80+ CRI)
Installation:	Cove Mounted
Luminous Length:	47.77 in
Luminous Width:	0.77 in
Luminous Height:	0.00 in

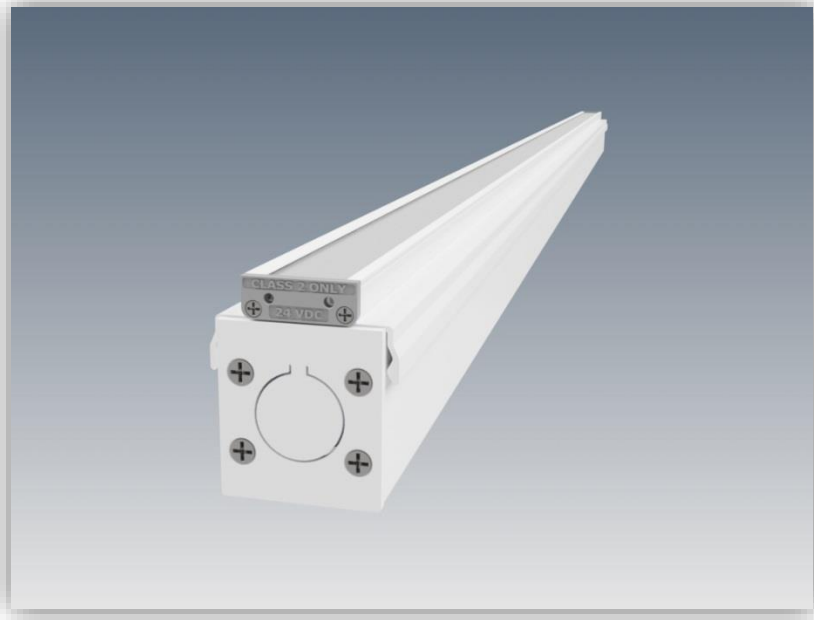


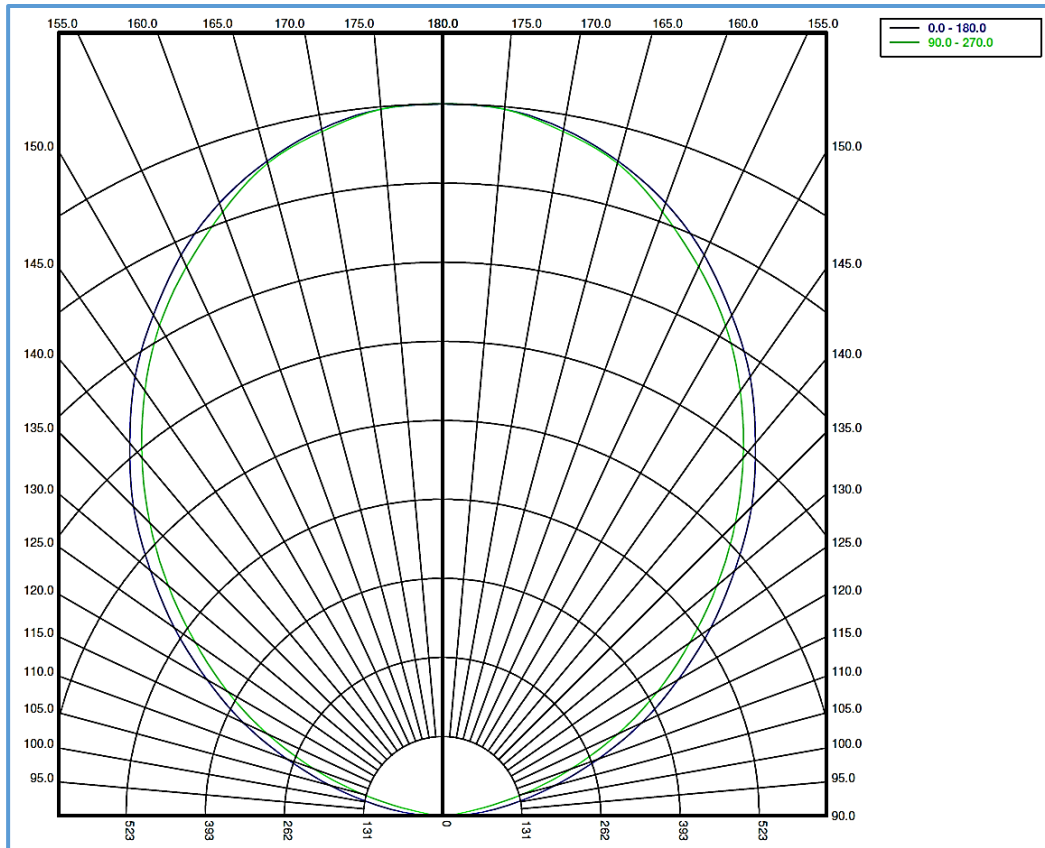
Image may differ slightly from actual unit

Summary of Results

System Power:	25.8W
Total Luminaire Output:	3007 Lumens
Luminaire Efficacy:	117 lm/W
Max Candela:	1177.81 Candela

Calculated results may not be representative of field performance
Ballast factors have not been applied

Polar Plot



Zonal Lumen Summary

Zone	Lumens	% Fixture	Zone	Lumens	% Fixture
0-10	0	0.0%	90-100	42.17	1.4%
10-20	0	0.0%	100-110	178.56	5.9%
20-30	0	0.0%	110-120	338.92	11.3%
30-40	0	0.0%	120-130	466.31	15.5%
40-50	0	0.0%	130-140	542.5	18.0%
50-60	0	0.0%	140-150	545.06	18.1%
60-70	0	0.0%	150-160	466.5	15.5%
70-80	0	0.0%	160-170	315.66	10.5%
80-90	0	0.0%	170-180	111.05	3.7%
0-90	0	0.0%	0-180	3006.73	100.0%

Candela Distribution

Horizontal Angle (Degrees)

	0	22.5	45	67.5	90	112.5	135	157.5	180	202.5	225	247.5	270	292.5	315	337.5
90	14	3	2	1	1	1	2	3	14	3	2	1	1	1	2	3
95	66	48	21	14	14	14	21	48	66	48	21	14	14	14	21	48
100	122	117	91	64	55	64	91	117	122	117	91	64	55	64	91	117
105	192	187	170	147	137	147	170	187	192	187	170	147	137	147	170	187
110	274	269	257	236	227	236	257	269	274	269	257	236	227	236	257	269
115	364	357	344	328	320	328	344	357	364	357	344	328	320	328	344	357
120	450	446	433	417	411	417	433	446	450	446	433	417	411	417	433	446
125	541	534	521	506	499	506	521	534	541	534	521	506	499	506	521	534
130	631	626	612	600	592	600	612	626	631	626	612	600	592	600	612	626
135	723	715	704	692	685	692	704	715	723	715	704	692	685	692	704	715
140	805	802	789	780	774	780	789	802	805	802	789	780	774	780	789	802
145	887	881	870	864	858	864	870	881	887	881	870	864	858	864	870	881
150	957	955	945	939	937	939	945	955	957	955	945	939	937	939	945	955
155	1024	1021	1011	1004	1002	1004	1011	1021	1024	1021	1011	1004	1002	1004	1011	1021
160	1079	1075	1077	1067	1063	1067	1077	1075	1079	1075	1077	1067	1063	1067	1077	1075
165	1122	1124	1120	1119	1118	1119	1120	1124	1122	1124	1120	1119	1118	1119	1120	1124
170	1154	1152	1155	1157	1150	1157	1155	1152	1154	1152	1155	1157	1150	1157	1155	1152
175	1174	1158	1168	1168	1174	1168	1168	1158	1174	1158	1168	1168	1174	1168	1168	1158
180	1178	1178	1178	1178	1178	1178	1178	1178	1178	1178	1178	1178	1178	1178	1178	1178

Average Luminance (cd/m²)

Horizontal Angle (Degrees)

ANGLES	0-Deg	45-Deg	90-Deg
0	0	0	0
45	0	0	0
55	0	0	0
65	0	0	0
75	0	0	0
85	0	0	0

Coefficients of Utilization – Zonal Cavity Method

Effective Floor Cavity Reflectance 20%																		
RC	80				70				50			30			10			0
RW	70	50	30	10	70	50	30	10	50	30	10	50	30	10	50	30	10	0
RCR	Values are in Lumens delivered to the Task Plane																	
0	2856	2856	2856	2856	2435	2435	2435	2435	1684	1684	1684	962	962	962	301	301	301	0
1	2616	2496	2375	2285	2225	2135	2045	1954	1443	1413	1353	842	812	782	271	271	241	0
2	2375	2165	1984	1864	2015	1864	1714	1594	1263	1203	1112	722	692	661	241	210	210	0
3	2165	1894	1684	1533	1834	1624	1473	1323	1112	1022	932	631	601	541	210	180	180	0
4	1954	1684	1443	1293	1684	1443	1263	1112	992	872	782	571	511	481	180	180	150	0
5	1804	1473	1263	1082	1533	1263	1082	962	872	752	661	511	451	391	150	150	120	0
6	1654	1323	1082	932	1413	1143	962	812	782	661	571	451	391	331	150	120	120	0
7	1503	1173	962	812	1293	1022	842	692	692	571	511	421	331	301	120	120	90	0
8	1413	1052	842	692	1203	902	722	601	631	511	421	361	301	271	120	90	90	0
9	1293	962	752	601	1112	812	661	541	571	451	391	331	271	241	120	90	90	0
10	1203	872	661	541	1022	752	571	481	511	421	331	301	241	210	90	90	60	0

