



PICASSO LIGHTING INDUSTRIES, LLC
46 Sellers Street, Kearny, NJ 07032
201.246.8188

Indoor Distribution Test Report

Picasso Lighting Industries, LLC

46 Sellers St.
Kearny, NJ 07032

Photopia Photometric Analysis & Optical Design

Catalog Number
CV1-C-4-I3-30-80-MC-W
(White Housing – Indirect – Opal Lens)

Test Number

IES-P00028

Test Date

2017-06-09

The results contained in this report pertain only to the tested sample.
This report shall not be reproduced, except in full, without written approval of Picasso Lighting Industries, LLC.

Luminaire Description:	Extruded Aluminum Cover (LED Enclosure), Indirect w/ Opal Lens
Lamp:	LED (3000K, 80+ CRI)
Installation:	Cove Mounted
Luminous Length:	47.77 in
Luminous Width:	0.77 in
Luminous Height:	0.00 in

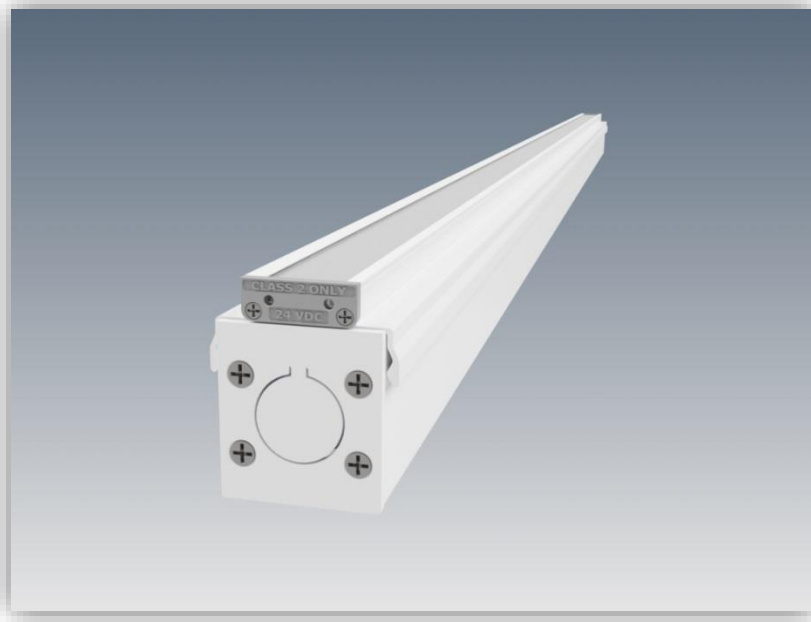


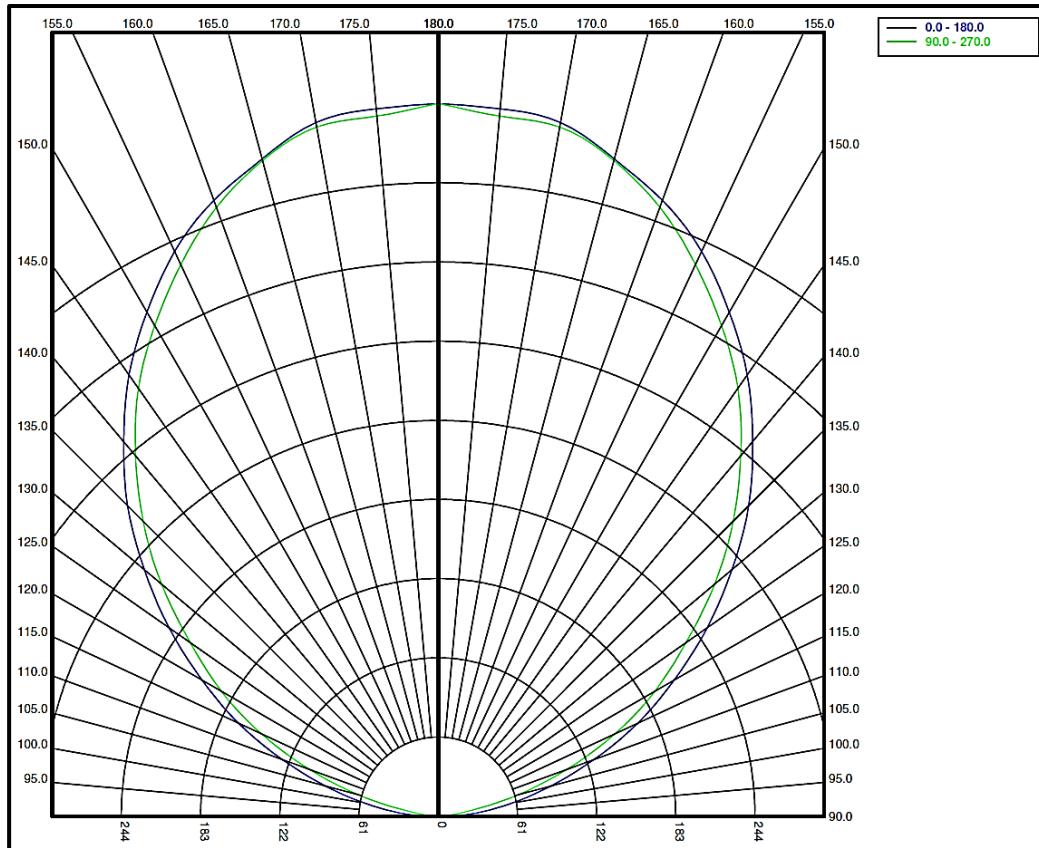
Image may differ slightly from actual unit

Summary of Results

System Power:	12.8W
Total Luminaire Output:	1405 Lumens
Luminaire Efficacy:	110 lm/W
Max Candela:	548.52 Candela

Calculated results may not be representative of field performance
Ballast factors have not been applied

Polar Plot



Zonal Lumen Summary

Zone	Lumens	% Fixture	Zone	Lumens	% Fixture
0-10	0	0.0%	90-100	19.73	1.4%
10-20	0	0.0%	100-110	83.47	5.9%
20-30	0	0.0%	110-120	158.42	11.3%
30-40	0	0.0%	120-130	217.67	15.5%
40-50	0	0.0%	130-140	253.53	18.0%
50-60	0	0.0%	140-150	254.82	18.1%
60-70	0	0.0%	150-160	217.89	15.5%
70-80	0	0.0%	160-170	147.39	10.5%
80-90	0	0.0%	170-180	51.85	3.7%
0-90	0	0.0%	0-180	1404.77	100.0%

Candela Distribution
Horizontal Angle (Degrees)

	0	22.5	45	67.5	90	112.5	135	157.5	180	202.5	225	247.5	270	292.5	315	337.5
90	7	1	1	1	1	1	1	1	7	1	1	1	1	1	1	1
95	30	23	10	7	7	7	10	23	30	23	10	7	7	7	10	23
100	57	55	43	30	26	30	43	55	57	55	43	30	26	30	43	55
105	90	87	80	69	64	69	80	87	90	87	80	69	64	69	80	87
110	128	126	119	111	106	111	119	126	128	126	119	111	106	111	119	126
115	170	167	160	154	150	154	160	167	170	167	160	154	150	154	160	167
120	210	208	202	195	193	195	202	208	210	208	202	195	193	195	202	208
125	253	249	244	236	233	236	244	249	253	249	244	236	233	236	244	249
130	295	292	287	279	278	279	287	292	295	292	287	279	278	279	287	292
135	338	335	328	323	321	323	328	335	338	335	328	323	321	323	328	335
140	376	376	368	364	362	364	368	376	376	376	368	364	362	364	368	376
145	415	412	407	404	402	404	407	412	415	412	407	404	402	404	407	412
150	448	447	441	438	436	438	441	447	448	447	441	438	436	438	441	447
155	480	475	472	470	469	470	472	475	480	475	472	470	469	470	472	475
160	504	502	502	498	499	498	502	502	504	502	502	498	499	498	502	502
165	524	527	522	523	522	523	522	527	524	527	522	523	522	523	522	527
170	542	537	537	538	539	538	537	537	542	537	537	538	539	538	537	537
175	546	547	547	546	541	546	547	547	546	547	547	546	541	546	547	547
180	549	549	549	549	549	549	549	549	549	549	549	549	549	549	549	549

Average Luminance (cd/m²)
Horizontal Angle (Degrees)

ANGLES	0-Deg	45-Deg	90-Deg
0	0	0	0
45	0	0	0
55	0	0	0
65	0	0	0
75	0	0	0
85	0	0	0

Coefficients of Utilization – Zonal Cavity Method

Effective Floor Cavity Reflectance 20%																		
RC	80				70				50			30			10			0
RW	70	50	30	10	70	50	30	10	50	30	10	50	30	10	50	30	10	0
RCR	Values are in Lumens delivered to the Task Plane																	
0	1335	1335	1335	1335	1138	1138	1138	1138	787	787	787	450	450	450	140	140	140	0
1	1222	1166	1110	1068	1040	997	955	913	674	660	632	393	379	365	126	126	112	0
2	1110	1011	927	871	941	871	801	745	590	562	520	337	323	309	112	98	98	0
3	1011	885	787	716	857	759	688	618	520	478	435	295	281	253	98	84	84	0
4	913	787	674	604	787	674	590	520	464	407	365	267	239	225	84	84	70	0
5	843	688	590	506	716	590	506	450	407	351	309	239	211	183	70	70	56	0
6	773	618	506	435	660	534	450	379	365	309	267	211	183	155	70	56	56	0
7	702	548	450	379	604	478	393	323	323	267	239	197	155	140	56	56	42	0
8	660	492	393	323	562	421	337	281	295	239	197	169	140	126	56	42	42	0
9	604	450	351	281	520	379	309	253	267	211	183	155	126	112	56	42	42	0
10	562	407	309	253	478	351	267	225	239	197	155	140	112	98	42	42	28	0

